



Compton Crescent, London, W4 3JA

Cow & Co
LONDON



Located on a quiet residential road in the popular Grove park area of Chiswick, this beautifully presented two bedroom flat offers a light and spacious reception room, a modern kitchen and two generous sized bedrooms. The property further benefits from sizeable useful storage.

Compton Crescent is located in heart of Grove Park, a stone's throw away from Grove Park Primary School and the famous parade of shops at Fauconberg Road.

Transport links; Bus routes to Chiswick High Road, A4 and only 805 meters (0.5 mile) from Chiswick Station (Waterloo)

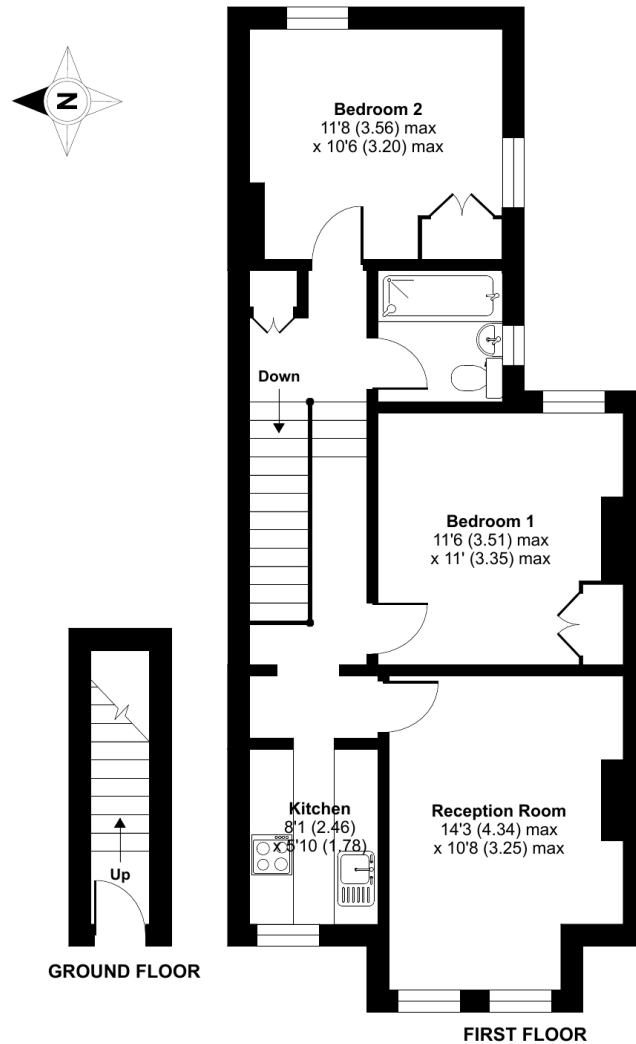


- Beautifully presented two bedroom apartment
- Bright and airy reception room
- Two generously size bedrooms
- Close to a wealth of amenities and transport links
- Separate kitchen
- Chain free sale immediate vacant possession available
- Period conversion
- Long lease

Compton Crescent, London, W4

Approximate Area = 654 sq ft / 60.8 sq m

For identification only - Not to scale



Floor plan produced in accordance with RICS Property Measurement Standards incorporating International Property Measurement Standards (IPMS2 Residential). © nchecon 2024. Produced for Cow & Co Properties Ltd. REF: 1117952

Tel: 0208 065 0010
Email: thehub@cowandco-london.com
Web: cowandco-london.com

Agents note: All measurements are approximate and whilst every attempt has been made to ensure accuracy they are for general guidance only and must not be relied on. The fixture and fittings referred to have not been tested and therefore no guarantee can be given that they are in working order. Internal photographs are reproduced for general information and it must not be inferred that any item shown is included with the property.

Cow & Co
LONDON