



CHI

APARTMENT NO.7

KINGSBRIDGE

•

TQ7 1AB



91-93 FORE STREET

FIRST FLOOR

Entrance Hallway | Bedroom 1 | Open-Plan Kitchen/Living/Dining
Room | Shower Room

EXTERNAL

Allocated Parking Space



“A modern 1 bedroom apartment with parking and central location”...

Discover the perfect blend of historic charm and modern comfort in Apartment 7, situated within the beautifully renovated 91-93 Fore Street — one of Kingsbridge's most iconic and characterful buildings.

- Newly Renovated
- Period Features
- Large Bedroom
- Allocated Parking Space
- Walking Distance To Amenities

As you step inside, you're welcomed by a spacious entrance hallway that leads through to the heart of the home: a bright and airy open-plan kitchen, living, and dining area. This inviting space features a lovely bay window overlooking Kingsbridge High Street. Creating a cosy nook that has been thoughtfully carpeted for added comfort perfect for relaxing and watching the world go by.

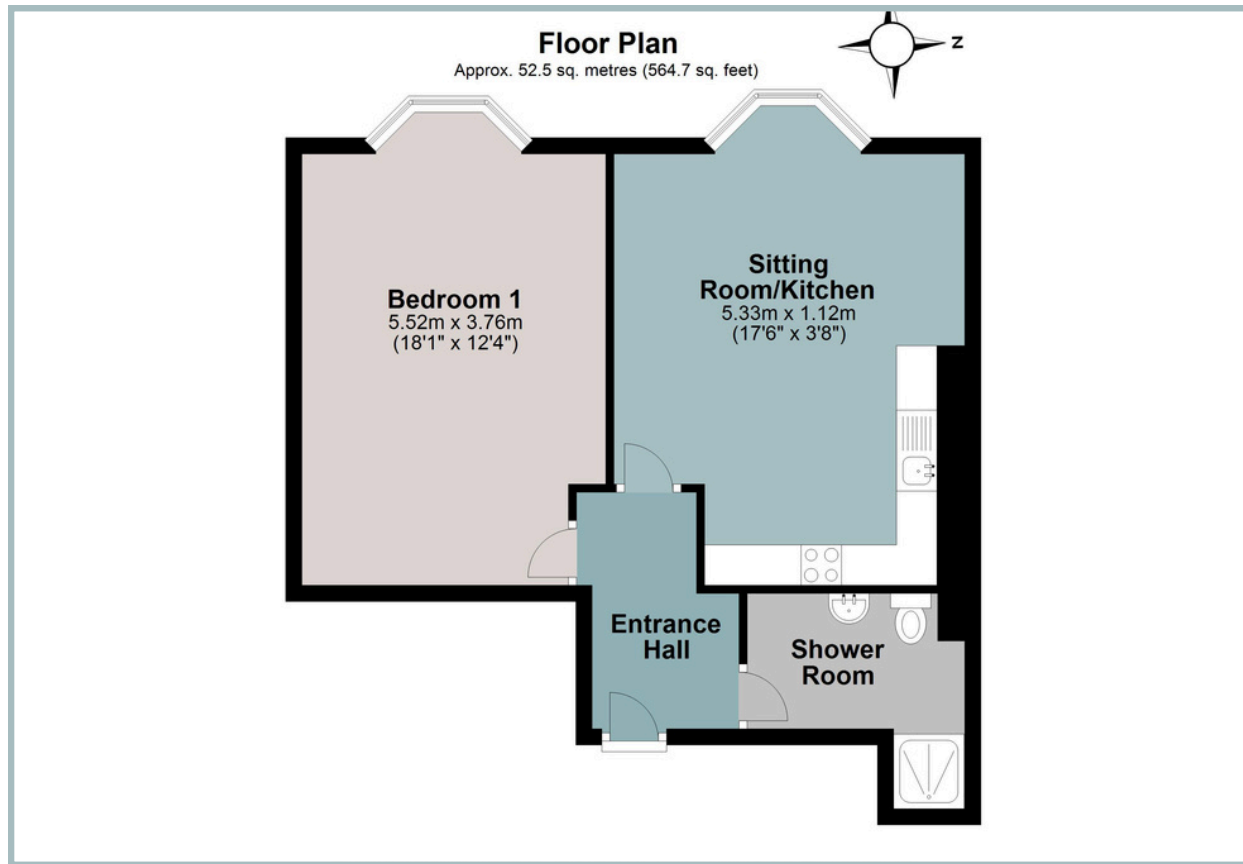
Adjacent to the living space is a generously sized bedroom, which also enjoys the benefit of its own bay window, filling the room with natural light and enhancing the sense of space.

Completing the apartment is a modern and stylish shower room, designed with contemporary finishes while complementing the building's unique character.

Apartment 7 offers a rare opportunity to own a beautifully crafted home within a historic building, seamlessly combining period features with modern living.



TOTAL APPROXIMATE AREA: 52.5 SQ M 564.7 SQ FT



IMPORTANT NOTICE: We would like to inform prospective purchasers that these sales particulars have been prepared as a general guide only. They are prepared and issued in good faith and are intended to give a fair description of the property, but do not constitute part of an offer or contract. Any description or information given should not be relied on as a statement or representation of fact that the property or its services are in good condition. Neither Charles Head, nor any of its employees, has any authority to make or give any representation or warranty whatsoever in relation to the property. Floorplans are for guidance purposes only and may not be to scale. The photographs show only certain parts and aspects of the property at the time they were taken. Any reference to alterations to, or use of, any part of the property is not a statement that any regulations or other consent has been obtained. . If there are any important matters likely to affect your decision to buy, please contact us before viewing the property. ALL STATEMENTS CONTAINED IN THESE PARTICULARS AS TO THIS PROPERTY ARE MADE WITHOUT RESPONSIBILITY ON THE PART OF CHARLES HEAD.



113 FORE ST, KINGSBRIDGE TQ7 1BG
kingsbridge@charleshead.co.uk
01548 852 352
www.charleshead.co.uk

Tenure: Leasehold of remainder of 999 years

Council Tax Band: TBC

Local Authority: South Hams District Council

Services: Mains Electricity, Water And Drainage. Electric Heating and Mega Flo

Service Fee: TBC

Notes: Grade II Listed

EPC: D (60) Potential D (60)

Viewings: Very strictly by appointment only

Location: Kingsbridge is a sought-after market town nestled at the estuary head in the beautiful South Hams, a designated Area of Outstanding Natural Beauty. You'll find an array of independent shops, renowned dining experiences and cosy local pubs. The town amenities include two supermarkets, petrol station, cinema, leisure centre, medical facilities, community hospital and excellent schools.

Kingsbridge Community College is one of the top-rated secondary schools in the UK. The estuary offers boat moorings and water sport activities, while public transport and well-connected road links lead to nearby Dartmouth, Salcombe and Totnes. With an abundance of pristine beaches, hidden coves and breathtaking walks on the doorstep.

Directions: 91-93 Fore Street is located at the higher end of Fore Street on the right hand side just after the clock tower on the opposite side of the street.

What Three Words:///dizziness.silly.collected

Salcombe 6.8 miles - Totnes 13.1 miles (Railway link to London Paddington) - Dartmouth 14.5 miles