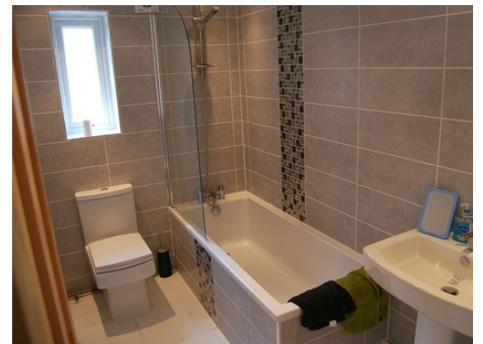




diamond
PROPERTIES



29 Park View Road, Burley, LEEDS. LS4 2LG.

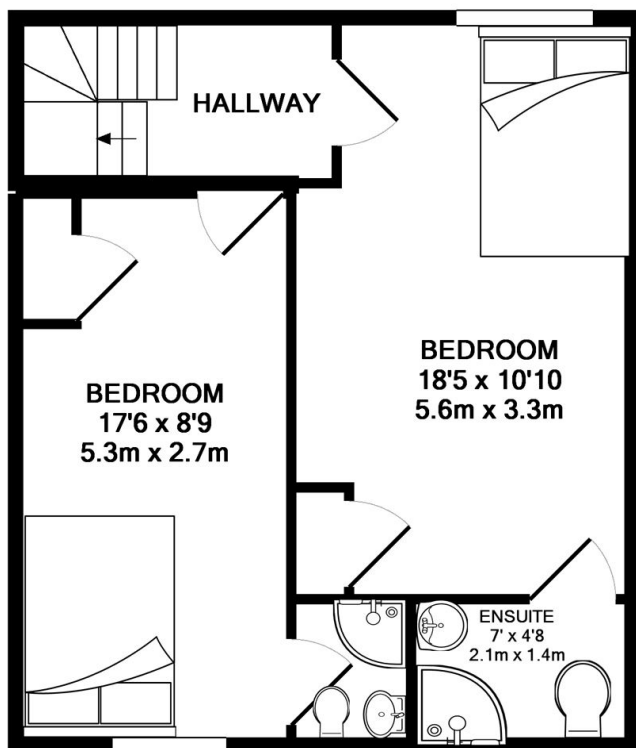
£1,369 Freehold

- Detached student property
- 3 Bedrooms
- New build Modern bungalow
- Off Street Parking
- Open plan living room/kitchen
- £105PPPW
- Available 01.07.2022

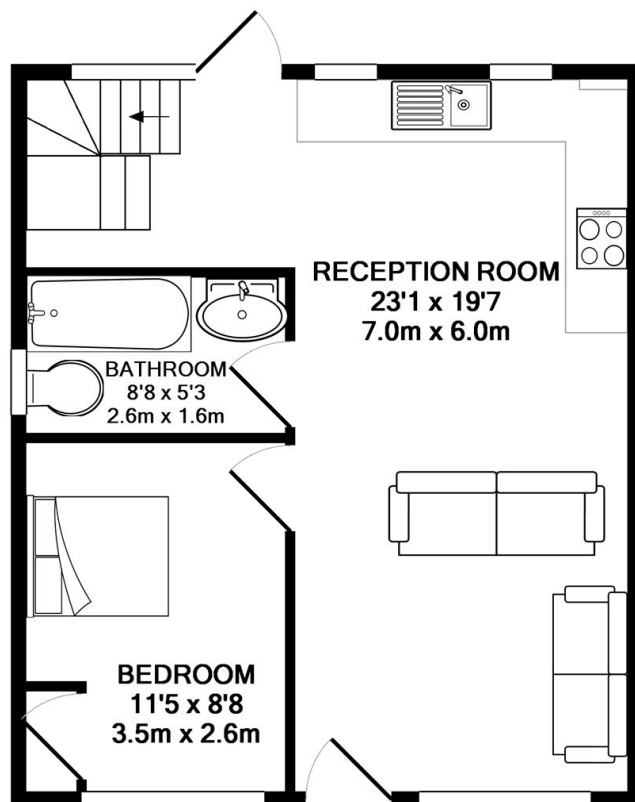
29 Park View Road, Burley, LEEDS. LS4 2LG.

£1,369 Freehold

This student house is a bit special!!! New build detached bungalow, three large double bedrooms, all with fitted furniture and 2 with en-suite shower rooms! With a house bathroom, open plan living kitchen, high gloss units, off street parking, and a large enclosed garden, this could be one of the best student properties on the market, and early viewing is essential!!! Close to local amenities and walking distance to Burley Train Station.



**BASEMENT LEVEL
APPROX. FLOOR
AREA 449 SQ.FT.
(41.7 SQ.M.)**



**GROUND FLOOR
APPROX. FLOOR
AREA 452 SQ.FT.
(42.0 SQ.M.)**

TOTAL APPROX. FLOOR AREA 901 SQ.FT. (83.7 SQ.M.)

Whilst every attempt has been made to ensure the accuracy of the floor plan contained here, measurements of doors, windows, rooms and any other items are approximate and no responsibility is taken for any error, omission, or mis-statement. This plan is for illustrative purposes only and should be used as such by any prospective purchaser. The services, systems and appliances shown have not been tested and no guarantee as to their operability or efficiency can be given
Made with Metropix ©2019

