



**58 Quantock Crescent, Emerson Valley,
Milton Keynes, Buckinghamshire, MK4
2AQ**

£305,000 Freehold

- THREE BEDROOM
- LARGE REAR PRIVATE GARDEN
- GARAGE & DRIVE WAY
- WALKING DISTANCE TO SHOPS & PARKS
- LARGE KITCHEN DINER
- EPC Rating

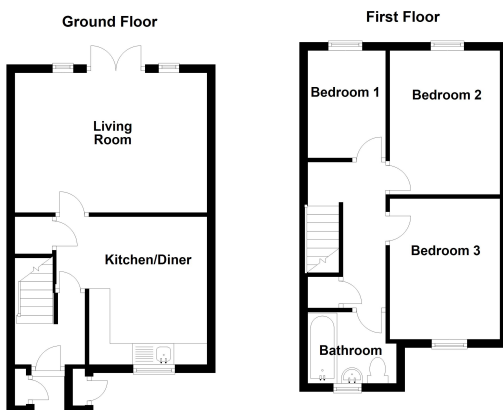




Elevation are delighted to bring to the market an WELL PRESENTED, three bedroom semi detached family home. Set within a QUIET CUL-DE-SAC in the popular and highly desirable area of EMERSON VALLEY. *VIDEO TOUR OF THE GARDEN* Ideal for families, within a short walking distance to OFSTED OUTSTANDING Schools. Emerson Valley itself is a popular area due to the local schools and green park areas and also the local amenities and convenience to Milton Keynes shopping centre and train station. Accommodation comprises of: Entrance hall, kitchen/diner, lounge, first floor landing, three bedrooms and family bathroom. Outside is an Large enclosed private rear garden and a front garden with driveway to side providing off road parking leading to a single garage.

Disclaimer

Whilst we have endeavoured to prepare our sales particulars accurately none of the services, appliances or equipment have been tested. A buyer should satisfy themselves on such matters prior to purchase. Any measurements or distances mentioned in these particulars are for guide reference only. If such particulars are fundamental to a purchase, buyers should rely on their own enquiries. All enquiries should be directed to Elevation Estate Agents in the first instance.



Floor plans are for layout purposes only. Measurements are approximate and subject to inaccuracies
Plan produced using PlanUp.