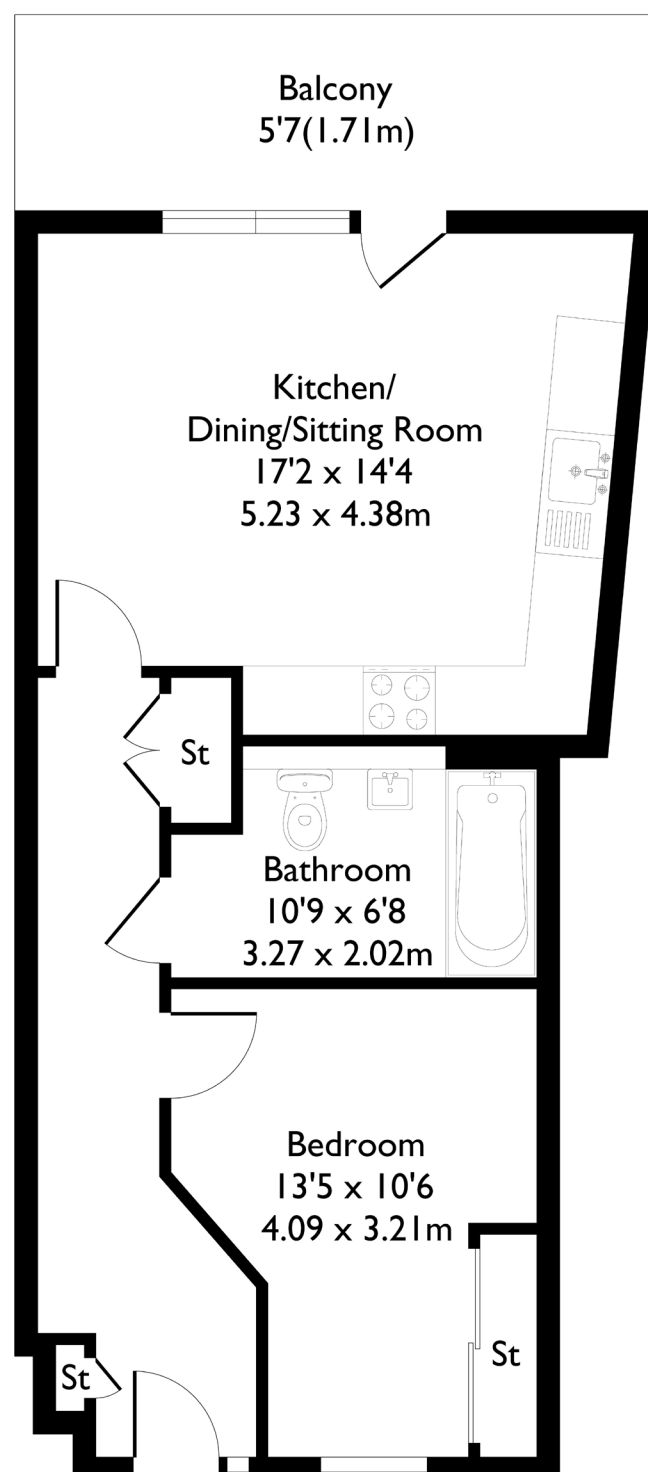
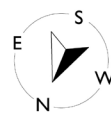


Tewkesbury Road, London, W13 0DP

Approximate Floor Area = 49.3 sq m / 531 sq ft



Fourth Floor



1 BEDROOM FLAT

Tewkesbury Road, W13 45% SHARED OWNERSHIP £130,500

Welcome to this beautifully presented one-bedroom, one-bathroom apartment in the heart of West Ealing.

This modern new-build features a spacious double bedroom, a contemporary bathroom, and an open-plan kitchen and living area that opens onto a private balcony — perfect for relaxing or entertaining.

FEATURES

- Chain Free
- One Bedroom
- One Bathroom
- Open Plan Kitchen/Living
- Private Balcony
- West Ealing Station (Elizabeth Line)
- Amenities Closeby
- EPC Rating B



1 BEDROOM FLAT

Tewkesbury Road, W13

Bright, airy, and move-in ready, the property is ideally located within a 10-minute walk of West Ealing Station (Elizabeth Line) and falls within the catchment area for St John's Primary School.

EPC Rating B.

