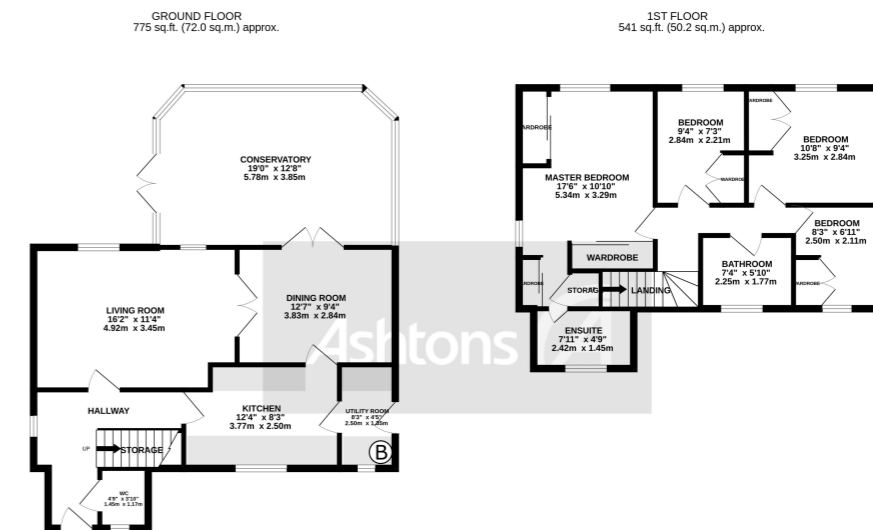


# Bembridge Close, Great Sankey, WA5 £415,000



TOTAL FLOOR AREA: 1315 sq.ft. (122.2 sq.m.) approx.  
While every attempt has been made to ensure the accuracy of the floorplan contained here, measurements of doors, windows, rooms and any other items are approximate and no responsibility is taken for any error, omission or misstatement. This plan is for guidance purposes only and should be used as such by any prospective purchaser. The services, systems and appliances shown here are from tested and not guaranteed as to their operability or efficiency on 10/10/2023. Made with Metropix ©2023



Location, location, location overlooking farmland this exciting property is in a peaceful cul-de-sac within this extremely sought-after residential area of Great Sankey. Occupying a large plot at the end of a peaceful cul-de-sac its location is hard to beat. Bembridge Close itself is adjacent to local parks and walking trails and provides easy access to a varied range of amenities.

 x 4     x 3

See more of this house at [ashtons.net](https://www.ashtons.net)

