



NEWSON & BUCK
ESTATE AGENTS



11 Daseleys Close, King's Lynn, Norfolk PE30 3SL

£200,000

Newson & Buck bring to market this three bedroom semi-detached home situated on the popular Grange Estate Development. The accommodation comprises hallway, lounge diner, kitchen, three bedrooms and bathroom. The property further benefits from off road parking for numerous vehicles and a garage. Local amenities can be found nearby including a range of schooling, with more extensive facilities found in King's Lynn Town Centre.

Glazed door and window to front, storage heater and fitted carpet.

23' 1" x 11' 5" (7.04m x 3.48m) Glazed windows to front and rear, two storage heaters and fitted carpet.

11' 5" x 8' 6" (3.48m x 2.59m) Glazed door to side, glazed window to rear, fitted kitchen, space for cooker, dishwasher and fridge freezer.

Glazed window to side, storage cupboard with hot water tank, access to loft and fitted carpet.

10' 11" x 11' 6" (3.33m x 3.51m) Glazed window to rear, storage heater and fitted carpet.

12' 10" x 8' 11" (3.91m x 2.72m) Glazed window to front, storage heater and fitted carpet.

8' 6" x 8' 6" (2.59m x 2.59m) Glazed window to front, storage heater and fitted carpet.

6' 0" x 5' 5" (1.83m x 1.65m) Glazed window to rear, three piece suite and fitted carpet.

Up and over door to front, glazed window and personal door to side.

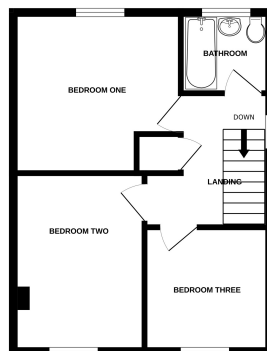
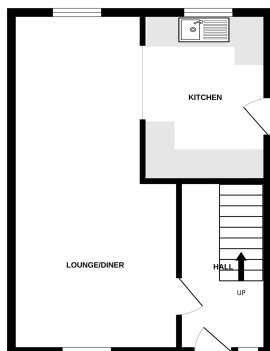
Shingle driveway leading to garage with the remaining front garden laid to lawn. To the rear of the property is an enclosed garden.

Council Tax Band: B



GROUND FLOOR

1ST FLOOR



Whilst every attempt has been made to ensure the accuracy of the floorplan contained here, measurements of doors, windows, rooms and any other items are approximate and no responsibility is taken for any error, omission or mis-statement. This plan is for illustrative purposes only and should be used as such by any prospective purchaser. The services, systems and appliances shown have not been tested and no guarantee as to their operability or efficiency can be given.