



e: sales@localagent.properties | w: www.localagent.properties



79 Motte Lane, Ebbsfleet Valley, Swanscombe, Kent, DA10 1AG
Guide Price £260,000 Leasehold

Basepoint Business Centre Victoria Road, Dartford, DA1 5AJ | t: 01322473337



Description

Guide Price £260,000 - £270,000

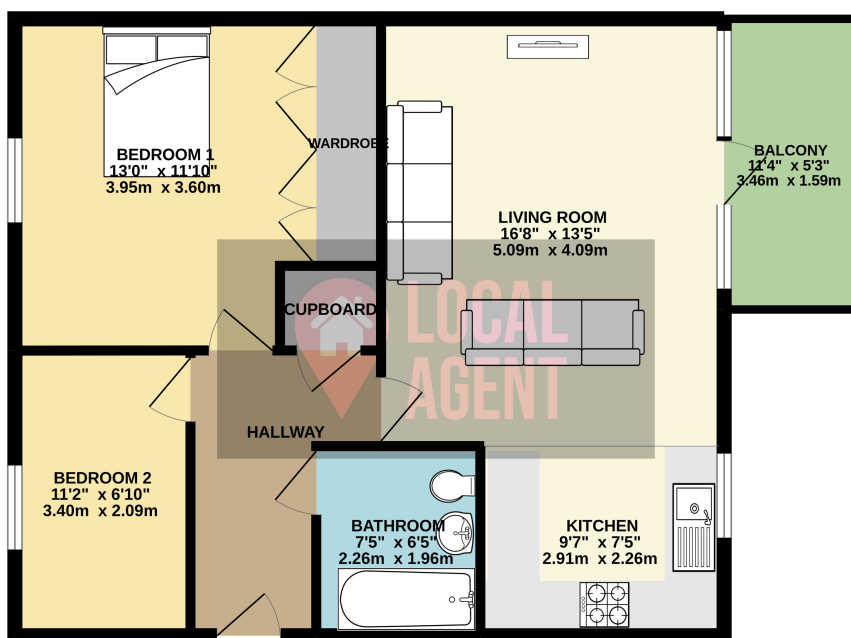
No Forward Chain

Modern two bedroom first floor flat, within walking distance to Ebbsfleet International Station. Use our online diary to request your viewing.

Built in 2018, this modern block has lots to offer! The property comprises of two large double bedroom with modern bathroom. Fitted wardrobes to the main bedroom. Open plan kitchen/ living room with a balcony off the living room. The Kitchen has integrated appliances. Externally there is an allocated parking space and communal grounds to enjoy.

Castle Hill is situated in a prime location with its own communal parks, walkways and within minutes to Ebbsfleet International Station which provides access to London within 17 minutes and Europe in only 70 minutes. Castle Hill has excellent road networks via the A2 and easy access to the M25. Bluewater Shopping Centre is one of the largest in Europe and approximately 3 miles away offering a fantastic choice of hundreds of stores and cafes, bars and restaurants, plus a cinema. Sainsbury's Superstore is only 0.6miles away.

GROUND FLOOR
670 sq.ft. (62.2 sq.m.) approx.



TOTAL FLOOR AREA: 670 sq.ft. (62.2 sq.m.) approx.

Whilst every attempt has been made to ensure the accuracy of the floorplan contained here, measurements of doors, windows, rooms and other areas are approximate and no responsibility is taken for any error.