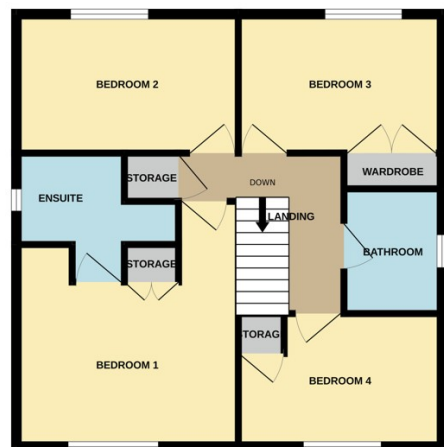
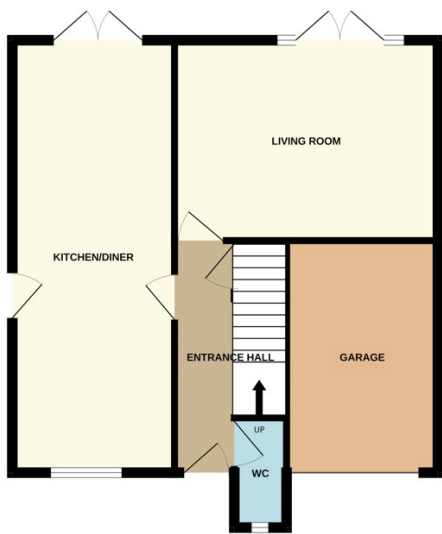




WERRINGTON

£375,000



*** CUL DE SAC LOCATION *** " Located in the highly desirable village of Werrington, this 4 bedroom detached home is well presented throughout. Featuring parking, garage, entrance hall, kitchen/diner, living room, WC, 4 bedrooms with an en-suite to bedroom one, and a family bathroom. Viewings are highly recommended to appreciate this beautifully presented family home. Council Tax Band - D / EPC Energy Rating - D "