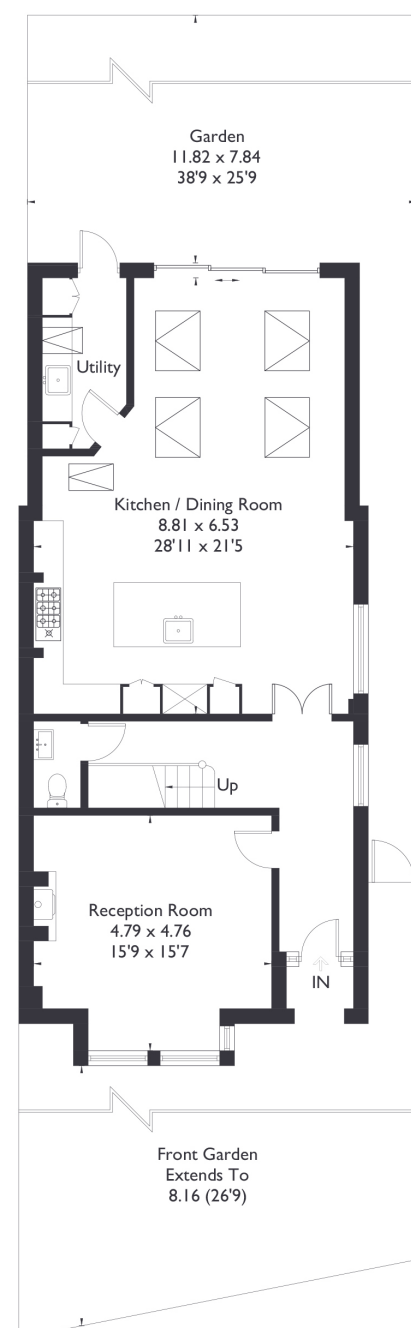
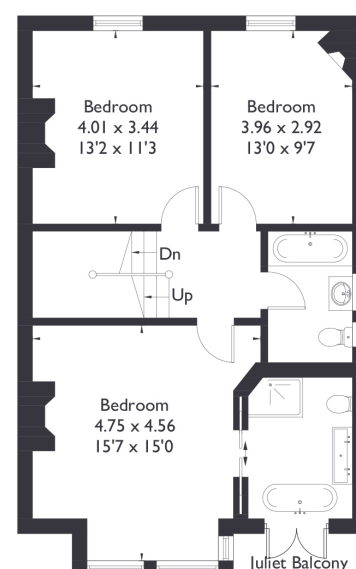


Elers Road ,W13

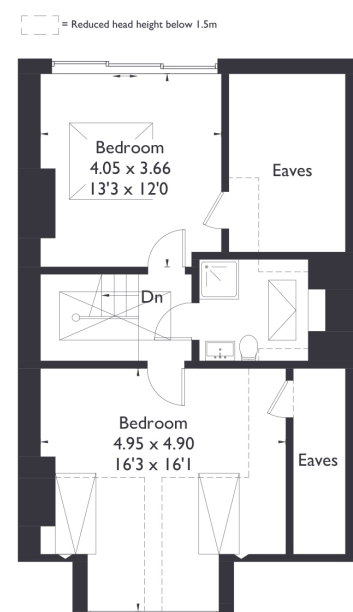
Approximate Floor Area = 223.2 sq m / 2402 sq ft (Including Eaves)



Ground Floor



First Floor



Second Floor



5 BEDROOM HOUSE

Elers Road, W13

£2,400,000

Welcome to this stunning five bedroom, three bathroom home with an additional downstairs W/C, perfectly positioned opposite the beautiful Lammas Park, offering uninterrupted park views from the front of the property.

Finished to an exceptional standard throughout, the home features striking floor-to-ceiling glass elements that flood the interiors with natural light. Upon entering, you are welcomed by a spacious reception room to your left, leading seamlessly into an impressive open-plan kitchen, dining, and living space. This area flows effortlessly onto the landscaped garden, creating a wonderful environment for entertaining and everyday living. A stylish utility room with garden access sits just off the main living space, adding to the property's functionality.

FEATURES

- Five Bedrooms
- Three Bathrooms/ Downstairs W/C
- Open Plan Kitchen/Living
- Views of Lammas Park
- Landscaped Gardens
- Northfields Station
- Northfields/ South Ealing Amenities
- Driveway Parking/ EV Charger



5 BEDROOM HOUSE

Elers Road, W13

Upstairs, you'll find three generous double bedrooms, including one with a luxurious en suite complete with a freestanding bath and balcony overlooking the park—perfect for relaxing with a view.

This floor also benefits from a well-appointed family bathroom. The top floor showcases two further double bedrooms, both featuring stunning architectural glazing and park views. One of the bedrooms boasts a dramatic sliding panoramic window that opens up the entire wall, offering a beautiful vista of the garden below—an ideal spot for a home office or peaceful retreat while watching the children play. A third bathroom on this floor makes it a perfect guest suite or teenager's hideaway. This unique home perfectly combines elegant design, modern comfort, and an unbeatable location—an exceptional opportunity for families seeking space, style, and access to green open spaces such as Lammas and Walpole park. With outstanding schools nearby and equidistant from the vibrant Northfields Avenue, independent South Ealing coffee shops and close to Ealing Broadway station This beautifully finished property is a rare gem that offers both exceptional quality and lifestyle convenience. EPC Rating C.

