



Lexden Road, London, W3 9NG

Cow & Co
LONDON



Guide price of £250,000 to £350,000. A large light filled two double bedroom apartment with a private balcony providing stunning views across London. Situated close to the shops and amenities of Churchfield road with its selection of independent cafes and gastro pubs.

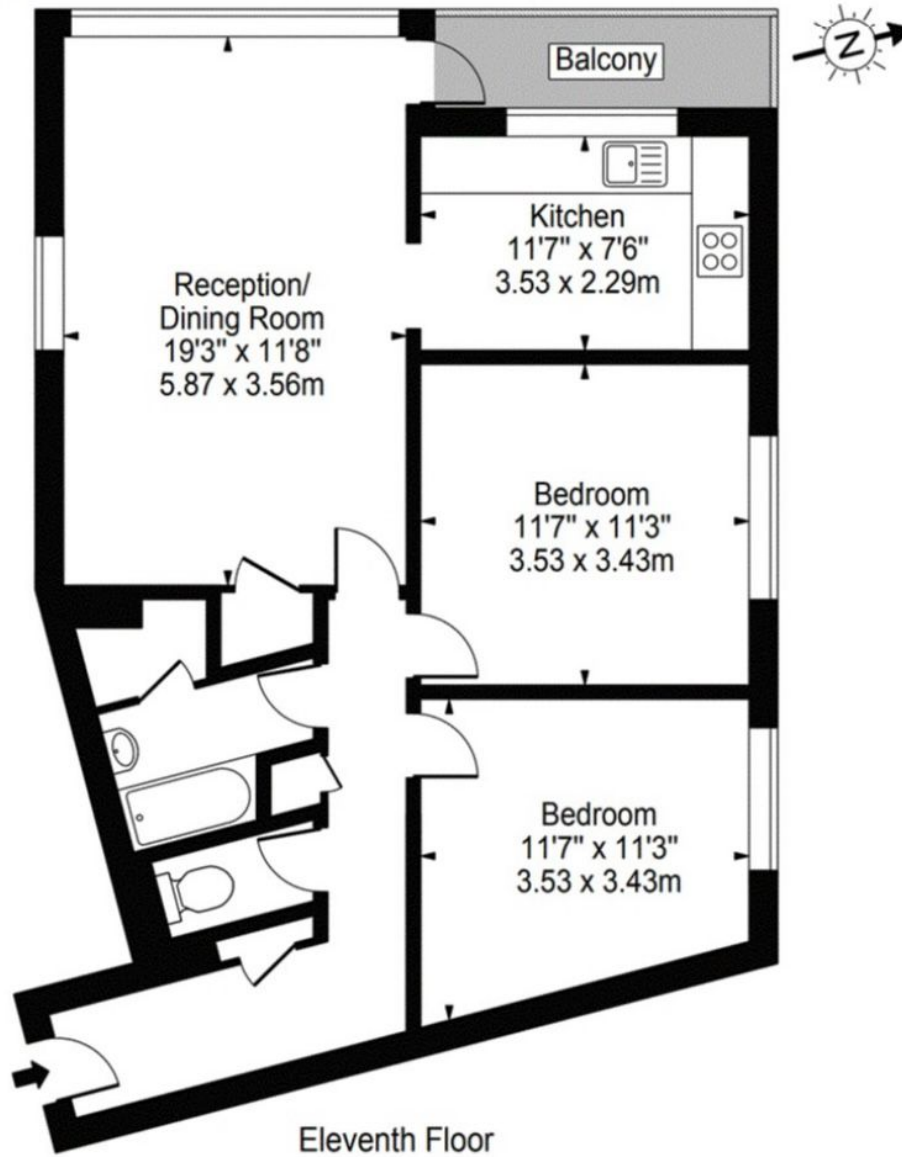
Acton Town (district and Piccadilly Lines), Ealing Common, (district and Piccadilly Lines), Ealing Broadway (Elizabeth Line) and Acton Central Stations are just a short walk away.



- Two double bedroom apartment
- Private Balcony
- Lift Access
- Good Transport Links nearby
- Large sitting room
- Stunning views across London
- Walking distance to three Tube Stations
- Ideal Investment

Moreton Tower, W3

Approx. Gross Internal Area 762 Sq Ft - 70.79 Sq M



Agents note: All measurements are approximate and whilst every attempt has been made to ensure accuracy they are for general guidance only and must not be relied on. The fixture and fittings referred to have not been tested and therefore no guarantee can be given that they are in working order. Internal photographs are reproduced for general information and it must not be inferred that any item shown is included with the property.

Tel: 0208 065 0010
Email: thehub@cowandco-london.com
Web: cowandco-london.com

Cow & Co
LONDON