

Prestbury Drive

BA12 9LB

COOPER
AND
TANNER



£195,000 Freehold

🛏️ 3 🛋️ 2 🚿 1 EPC C

Description

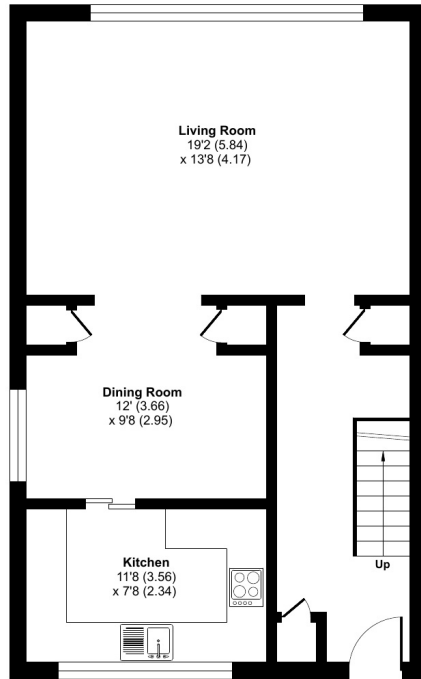
A spacious three bedroom maisonette being offered for sale with no ward chain. The property is located in a sought after position and benefits from a garage and parking. In brief the accommodation comprises entrance hall stairs rising to the first floor and cupboard beneath, sitting room, dining room, kitchen with a range of fitted wall and base units with integrated oven and hob and space for appliances, three good size bedrooms and a family bathroom. Internal viewing comes highly recommended.



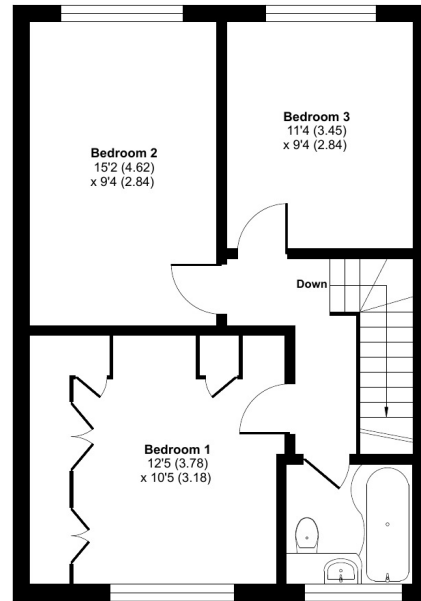
Prestbury Drive, Warminster, BA12

Approximate Area = 1151 sq ft / 106.9 sq m (includes garage)

For identification only - Not to scale



GROUND FLOOR



FIRST FLOOR



Floor plan produced in accordance with RICS Property Measurement Standards incorporating International Property Measurement Standards (IPMS2 Residential). © nichecom 2023. Produced for Cooper and Tanner. REF: 975920



Features

- Spacious maisonette in a popular residential development
- No onward chain
- Sitting room
- Dining room
- Kitchen
- Three bedrooms
- Bathroom
- Garage and parking

Local Information

- Council Tax Band B
- Tenure Freehold
- EPC Rating C

WARMINSTER OFFICE

Telephone 01985 215579

48-50, Market Place, Warminster, Wiltshire BA12 9AN

warminster@cooperandtanner.co.uk

**COOPER
AND
TANNER**

Important Notice: These particulars are set out as a general outline only for the guidance of intended purchasers and do not constitute, nor constitute part of, an offer or contract. All descriptions, dimensions, reference to condition and necessary permissions for use and occupation, warranties and other details are given without responsibility and any intending purchasers should not rely on the m as statements or representations of fact but must satisfy themselves by inspection or otherwise as to the correctness of each of them.

