







**22 Rosary Gardens, Ashford, Surrey TW15 1BX**  
**£525,000 - Freehold**





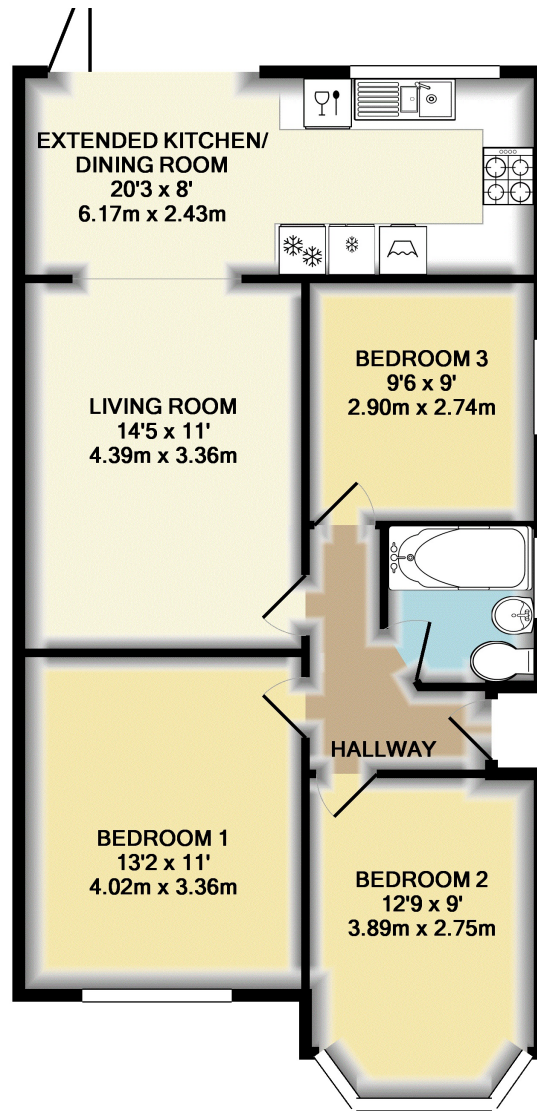
## PROPERTY DESCRIPTION

Situated at the bottom of this sought after cul-de-sac and offered for sale with no onward chain, the bungalow was completely refurbished a few years ago and extended to provide accommodation comprising of a hallway, living room open plan to an extended kitchen/dining room with integrated appliances and underfloor heating, three good size bedrooms and a luxury bathroom suite, the bungalow also benefits from replacement double glazed windows and gas central heating. Outside the property offers off road parking for two cars and a fully enclosed rear garden backing onto allotments. The property is within a minutes walk to Clockhouse Park, to arrange a viewing please contact the vendors sole agents Gregory Brown on 01784 255633.

## POINTS OF INTEREST

- Detached bungalow
- Three bedrooms
- No onward chain
- Off road parking
- Modern kitchen open plan to dining area
- Enclosed rear garden
- Close to Clockhouse Park
- Viewing recommended





TOTAL APPROX. FLOOR AREA 740 SQ.FT. (68.7 SQ.M.)

Whilst every attempt has been made to ensure the accuracy of the floor plan contained here, measurements of doors, windows, rooms and any other items are approximate and no responsibility is taken for any error, omission, or mis-statement. This plan is for illustrative purposes only and should be used as such by any prospective purchaser. The services, systems and appliances shown have not been tested and no guarantee as to their operability or efficiency can be given

Made with Metropix ©2018