



**daniels**  
danielsestateagents.co.uk

**daniels**  
danielsestateagents.co.uk



**Palermo Road, Kensal Green, London NW10 5YS**  
**£800,000 - Freehold**



## PROPERTY DESCRIPTION

A fabulous chance to purchase an END TERRACED HOUSE on a popular road in the heart of Kensal Green.

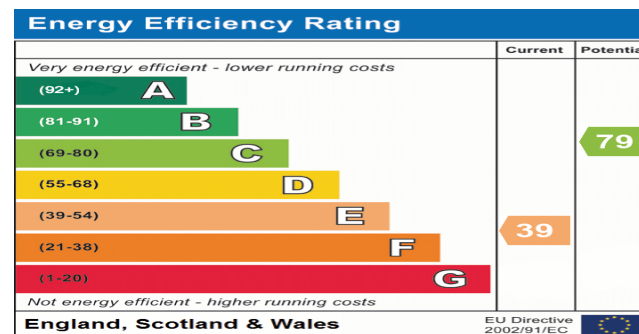
The property has been lovingly cared for by the same family for the past 50 years and offers POTENTIAL for EXTENSION into the loft and rear. Benefits include SIDE ACCESS, TWO SEPARATE RECEPTION ROOMS, KITCHEN and 60ft approx. REAR GARDEN.

The first floor boasts THREE BEDROOMS and FAMILY BATHROOM.

Palermo Road is located within close proximity to both Willesden Junction and Kensal Green Stations and also a number of local amenities.

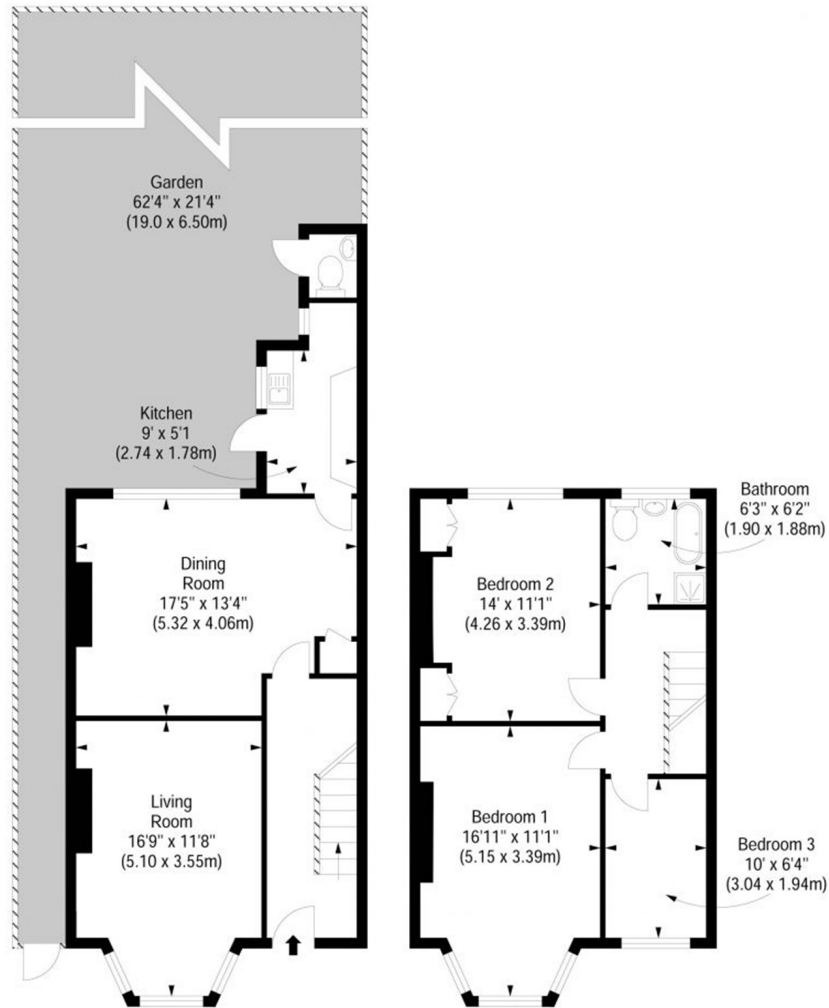
## POINTS OF INTEREST

- THREE BEDROOMS
- END OF TERRACE HOUSE
- POTENTIAL FOR EXTENSION (STPP)
- 60FT APPROX REAR GARDEN
- OFFERS INVITED
- CLOSE TO AMENITIES



**Palermo Road, Kensal Green, London, NW10 5YS**

Approximate Gross Internal Area 1074 sq ft / 99.77 sq m



Ground Floor

First Floor

Ref

Copyright THE BLEU PLAN

Disclaimer : Floor plan measurements are approximate and are for illustrative purposes only  
While we do not doubt the floor plan accuracy and completeness, you or your advisors should  
conduct a careful, independent investigation of the property in respect of monetary valuation

