



Whitehorse Street, Baldock, Hertfordshire. SG7 6QQ





2 Bedroom Terraced House £325,000 Freehold

A beautifully presented two bedroom period cottage, set in the historic market town of Baldock offering easy access to all of the shops, cafes, restaurants and mainline train station. The property boasts a huge rear garden and is packed full of charm and features.

- Two bedrooms
- Period cottage
- Original features
- Town centre location
- Beautifully presented
- Close to train station
- Large garden
- EPC exempt. Council tax band C



Ground Floor

Lounge:

Abt. 13' 6" x 10' 6" (4.11m x 3.20m) Sash windows to front aspect. Radiator. Stripped wooden floorboards. Radiator. Feature wall. Working fireplace and surround. Original beams.

Kitchen:

Abt. 13' 7" x 5' 5" (4.14m x 1.65m) A range of wall and base units with wooden worktops over. Oven, hob and extractor fan. Double sink and drainer. Plumbing for dishwasher. Radiator. Wooden flooring. Double glazed door to garden.

Bathroom:

Double glazed window to rear aspect. Three piece suite comprising panelled bath, low level wc and hand wash basin. Tiled walls and flooring.

First Floor

Bedroom One:

Abt. 13' 9" x 10' 9" (4.19m x 3.28m) Sash window to front aspect. Radiator. Stripped wooden flooring. Feature fireplace. and surround.

Bedroom Two:

Abt. 13' 6" x 6' 1" (4.11m x 1.85m) Sash window to front aspect. Radiator. Stripped wooden flooring.

Outside

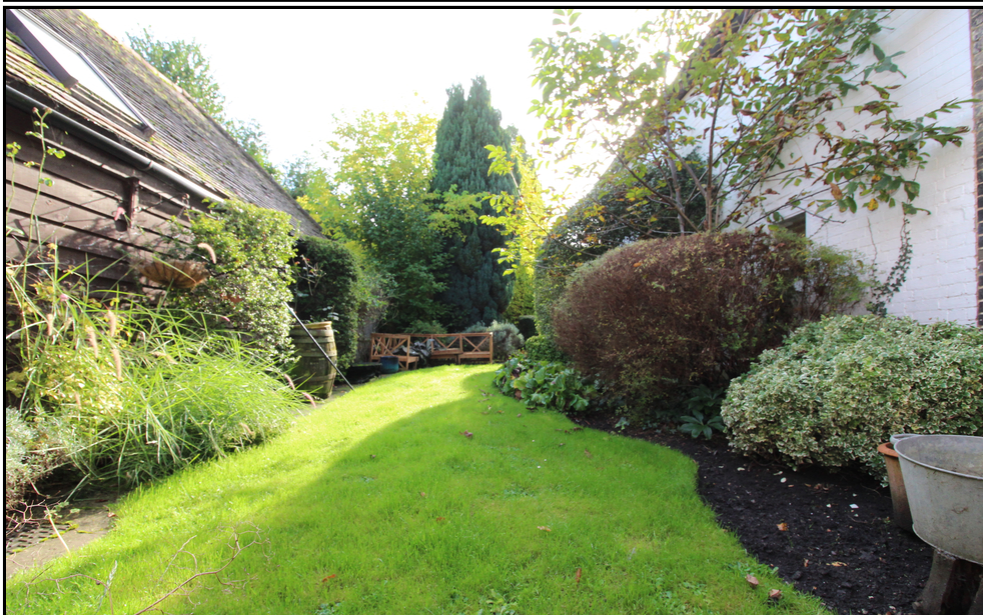
Rear Garden:

A large rear garden, mainly laid to lawn. Two timber built sheds. Mature trees and bushes. Water feature.

Agents Note:

Draft particulars yet to be approved by the vendor and may be subject to change.

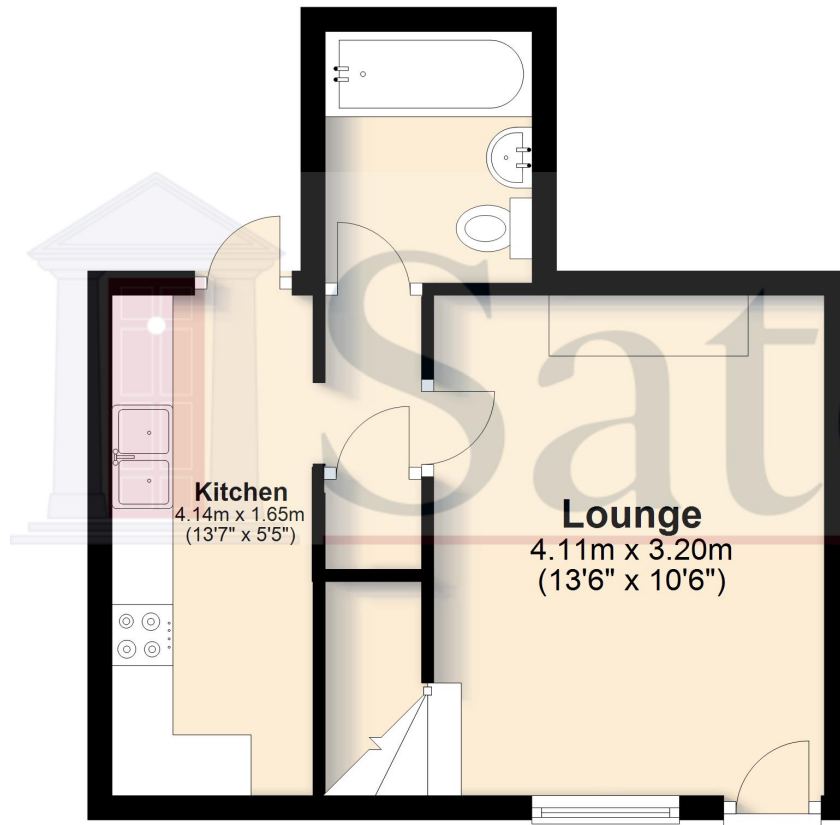




These particulars are a guide only and do not constitute an offer or a contract. The floor plan is for identification purposes only and not to scale. All measurements are approximate and should not be relied upon if ordering furniture, white goods and flooring etc. We have presented the property as we feel fairly describes it but before arranging a viewing or deciding to buy, should there be anything specific you would like to know about the property please enquire. Satchells have not tested any of the appliances or carried out any form of survey and advise you to carry out your own investigations on the state, condition, structure, services, title, tenure, and council tax band of the property. Some images may have been enhanced and the contents shown may not be included in the sale. Satchells routinely refer to 3rd party services for which we receive an income from their fee. If you would like us to refer you to one of these services please ask one of our staff who will pass your details on. We advise you check the availability of the property on the day of your viewing.



Ground Floor



First Floor



For illustrative purposes only - NOT TO SCALE - Measurements shown are approximate. The size and position of doors, windows, appliances and other features are approximate.
Plan produced using PlanUp.