



LONNEN ROAD, WIMBORNE BH21 7AZ



- ◆ **DETACHED FAMILY HOME**
- ◆ **THREE DOUBLE BEDROOMS**
- ◆ **SITUATED IN LAND APPROACHING TWO ACRES**
- ◆ **IDEAL FOR EQUESTRIAN ENTHUSIASTS**
- ◆ **STABLING AND ESTABLISHED GRAZING**
- ◆ **VENDORS SUITED**
- ◆ **DETACHED DOUBLE GARAGE AND OFFICES**
- ◆ **SOLE AGENTS**

A well appointed, three bedroom, detached family home situated within grounds approaching two acres and boasting both potential for development (STPP) as well as those with equestrian pursuits. Outbuildings include stables, detached double garage and purpose built office. Vendors Suited.

Property Description

The accommodation comprises a large entrance porch leading to a spacious reception hall with downstairs cloakroom. A featured split-level lounge opens through French doors to a large sun lounge. There is a study/music room with built in cupboards. The fully fitted kitchen has a wide variety of cupboards and built-in appliances and a dining area with glass French doors opening to the patio and gardens. There is a separate utility room. On the first floor is a spacious landing leading to three double bedrooms, generously supplied with fitted wardrobes and serviced by a family bathroom. The principle bedroom has a large ensuite facility. For storage there is an airing cupboard and attic store room. The home is entirely double glazed throughout and benefits from gas fired central heating.





Gardens and Grounds

'The Laurels' benefits from grounds which approach two acres and are neatly divided into two paddocks of 0.5 and 0.8 acres, with the balance being landscaped as formal gardens which surround the home. Adjacent to the home is a detached double garage which is served by the laid brick 'in and out' crescent shaped driveway, and there is a conservatory-style sun lounge attached to the garage. Furthermore, there is a detached, purpose built office adjacent to the garaging ideal for a home business operation. The gardens are predominantly laid to a kept lawn with mature flower beds surrounding the house, and intermittently planted around the garden. A stepping stone pathway leads away from the home towards a post and rail fence which in turn gives access to the block-built stables where there are two loose boxes as well as a tack store. Opposite the stable block is a purpose built wooden shed ideal for storing garden machinery. The smaller paddock benefits from direct gated access from Lonnen Road and in turn provides gated access to the larger paddock, which spans the rear boundary of the property.

Location

Wimborne is a vibrant and thriving market town in East Dorset with a comprehensive mix of shopping facilities, restaurants, and attractions to appeal to everyone. Easily accessed by car from all directions via the A31, A35 and B3081 Wimborne has great public transport links to Bournemouth, Poole and surrounding areas including a comprehensive network of bus routes. Wimborne is immersed in a varied history, preserved and on-show in the c.705 AD Minster Church of Cuthburga with its chained library which is one of only four world-wide. The beautiful twin towers of the Minster provide an elegant backdrop to the town's historic architecture and alongside The Priest's House Museum & Gardens, Wimborne Model Town and the 1930's Art Deco Tivoli theatre, combine to make Wimborne a popular tourist attraction. Wimborne is well served by an excellent range of services for residents including doctors, a local hospital, a pyramid of sought-after schools and strong health and social care. Leisure facilities are well catered for and the town is within easy access to the county's areas of outstanding natural beauty offering miles of bridleways, footpaths and coastal routes to explore.

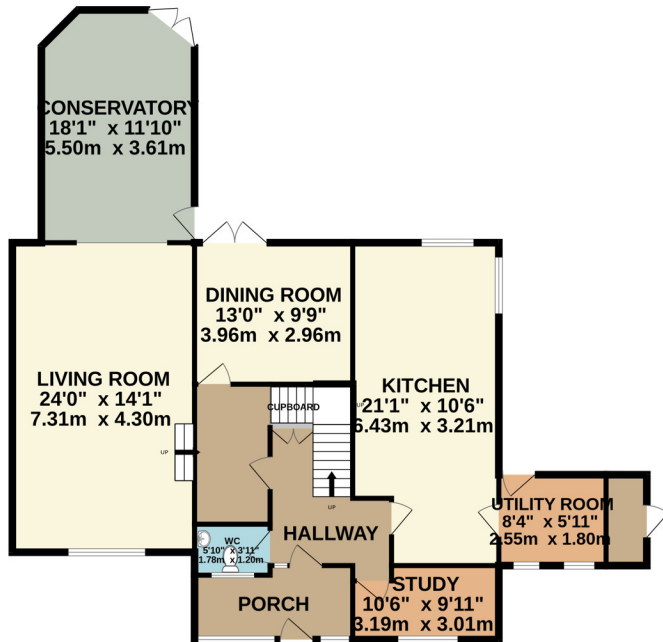


- Size: 3062 sq ft (284.4 sq m)
- Heating: Gas fired (Vented) serviced annually
- Glazing: Double glazed
- Parking: 8 spaces & garage
- Garden: South facing
- Main Services: Electric, water, gas, telephone
- Local Authority: Dorset Council
- Council Tax Band: F

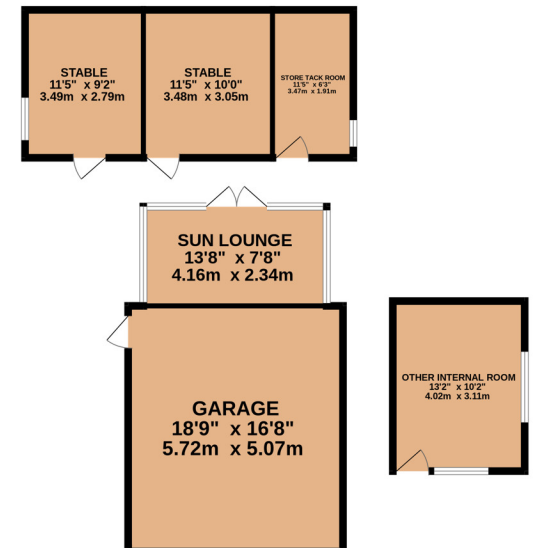
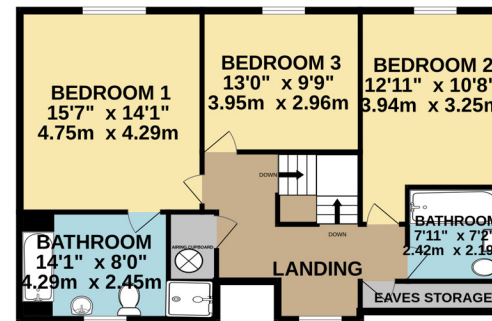




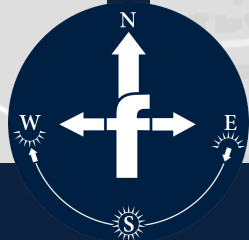
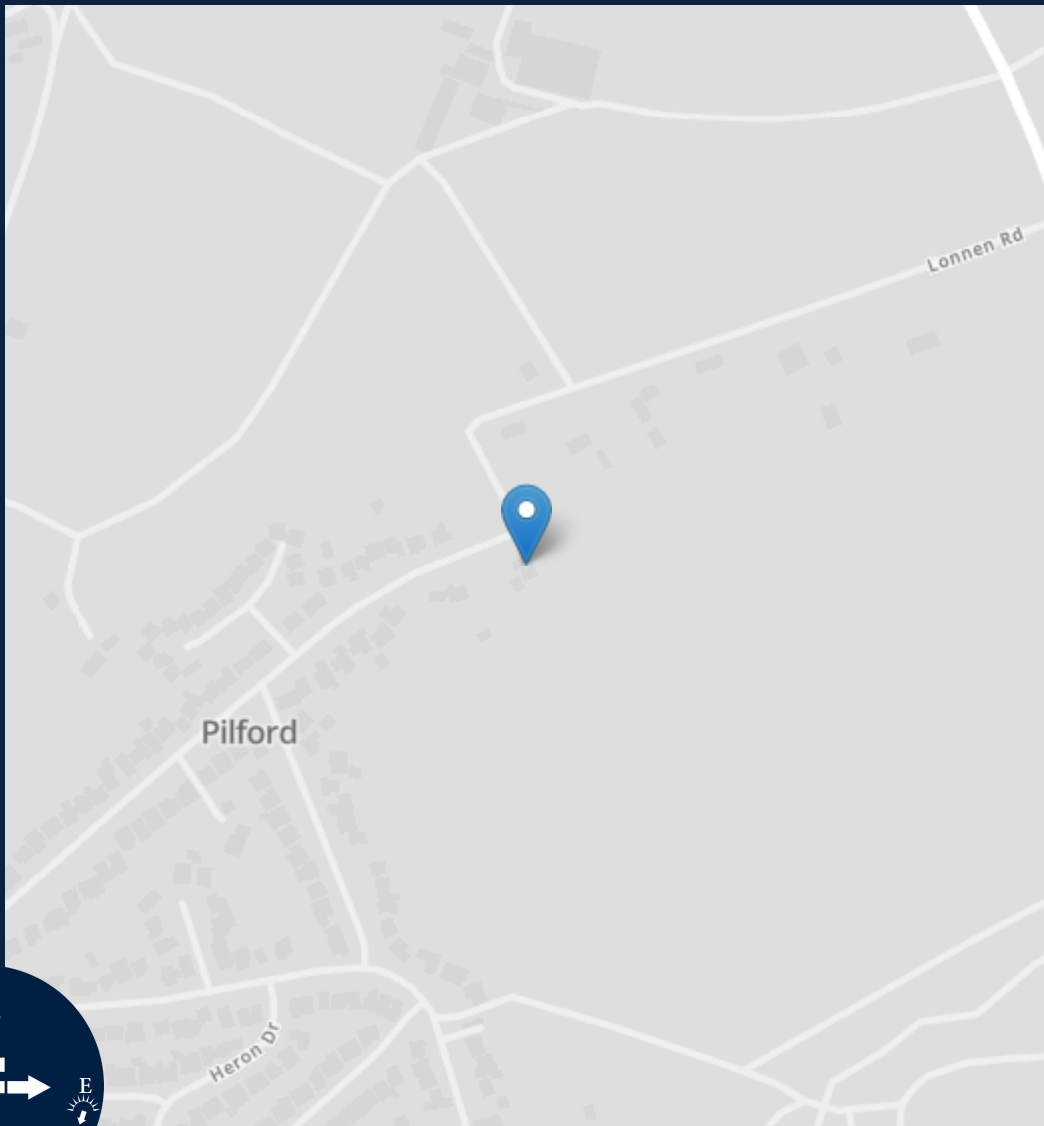
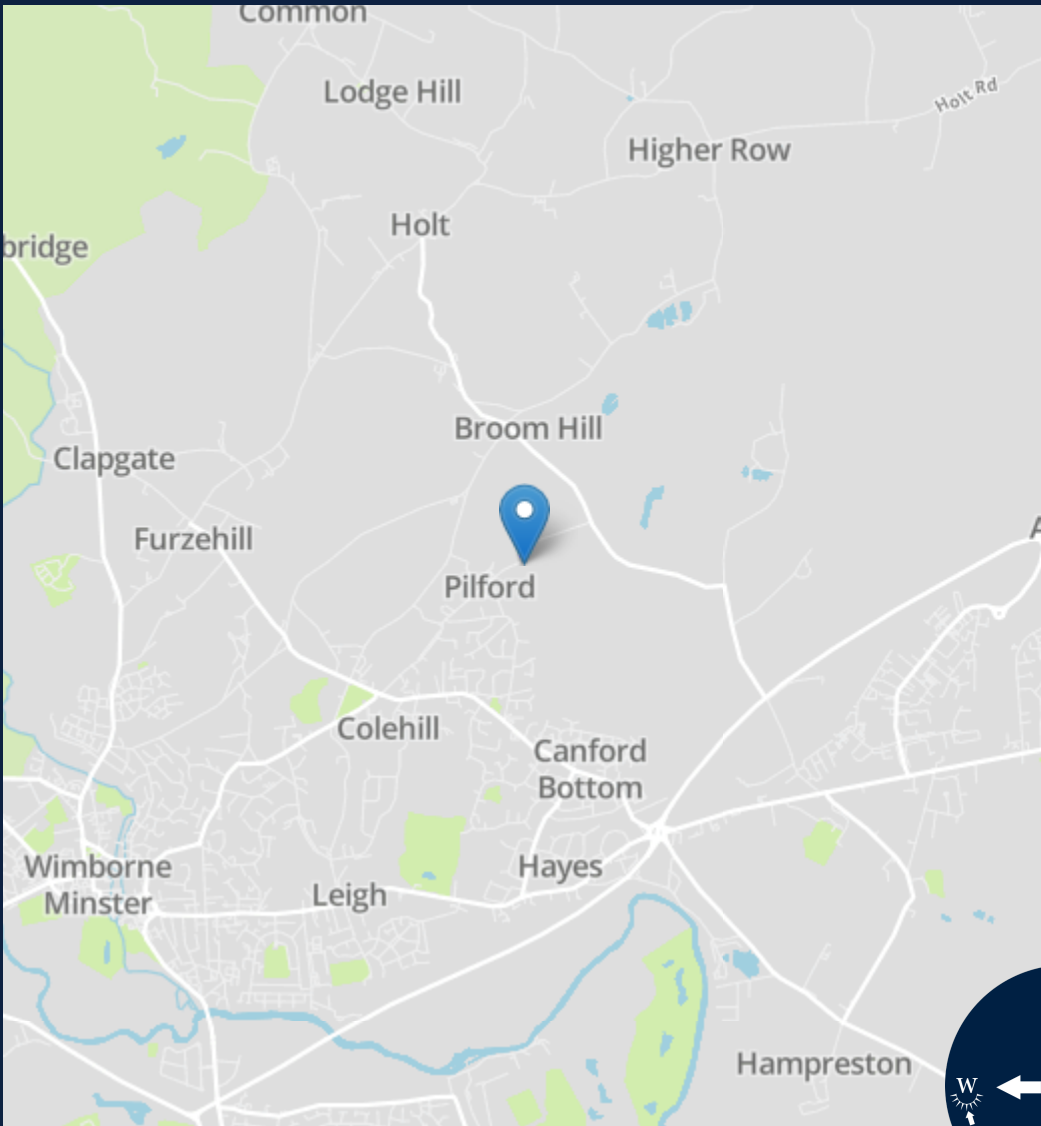
GROUND FLOOR
1339 sq.ft. (124.4 sq.m.) approx.



1ST FLOOR
1723 sq.ft. (160.1 sq.m.) approx.



TOTAL FLOOR AREA : 3062 sq.ft. (284.4 sq.m.) approx.
Measurements are approximate. Not to scale. Illustrative purposes only
Made with Metropix ©2024



Energy Efficiency Rating		
	Current	Potential
Very energy efficient - lower running costs		
(92+) A		
(81-91) B		
(69-80) C		
(55-68) D		
(39-54) E		
(21-38) F		
(1-20) G		
Not energy efficient - higher running costs		
	62	79
England, Scotland & Wales		
EU Directive 2002/91/EC		



Important notice: Fisks Estate Agents, their clients and any joint agents give notice that 1: They are not authorised to make or give any representations or warranties in relation to the property either here or elsewhere, either on their own behalf or on behalf of their client or otherwise. They assume no responsibility for any statement that may be made in these particulars. These particulars do not form part of any offer or contract and must not be relied upon as statements or representations of fact. 2: Any areas, measurements or distances are approximate. The text, photographs and plans are for guidance only and are not necessarily comprehensive. It should not be assumed that the property has all necessary planning, building regulation or other consents and Fisks Estate Agents have not tested any services, equipment or facilities. Purchasers must satisfy themselves by inspection or otherwise.

fisks

ESTATE AGENTS CHARTERED SURVEYORS

12 East Street, Wimborne,
Dorset, BH21 1DS

www.fisksestateagents.co.uk

01202 880000