



Coopers Yard

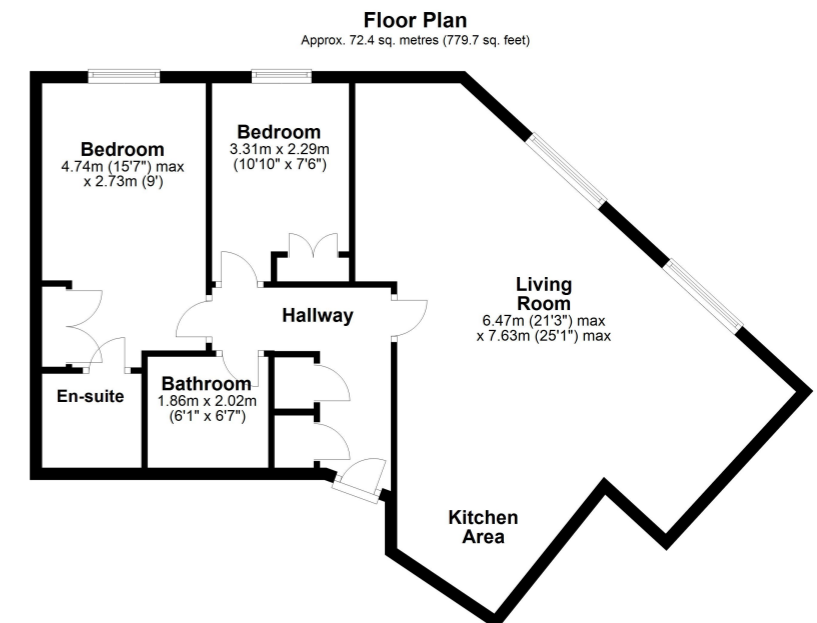
Paynes Park Hitchin SG5 1AU

£335,000 Leasehold

We are delighted to offer for sale this well presented and modern two bedroom ground floor apartment situated within the ever desirable Coopers Yard development.

The apartment offers open plan living with a fitted kitchen and modern wood effect flooring. The master bedroom has built in wardrobes and an en-suite shower room. There is a well appointed family bathroom and ample storage cupboards. Unground secure parking is also an added benefit along with a great location for access to the town centre.

There is no upper chain and the property is a must for any first time buyer or investor.



Total area: approx. 72.4 sq. metres (779.7 sq. feet)
All measurements shown are approximate and for guidance only. Garages and workshops are not included in any gross floor areas unless integral to the main building where they will be included.
Plan produced using PlanUp.