

12 Wear Bay Road

Folkestone
CT19 6AT

£650,000 FREEHOLD

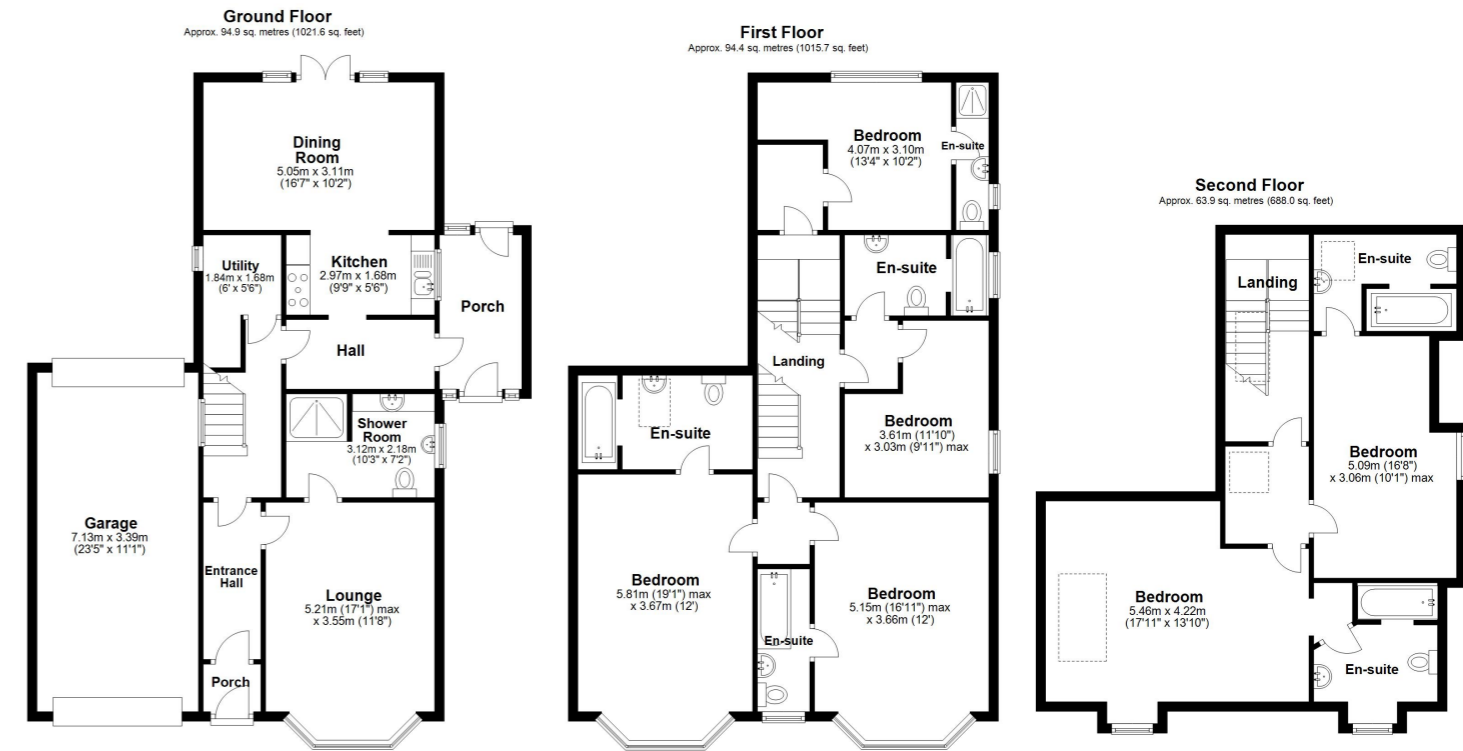
FOR SALE WITH BURNAP + ABEL..... Burnap + Abel are delighted to offer this substantial detached house situated in the popular clifftop location of Wear Bay Road in Folkestone. Offering panoramic sea views and period features this substantial home comprises lounge, kitchen/diner, six bedrooms, seven bathrooms and utility room. Additional benefits include off road parking, a garage, private rear garden and no onward chain. For your chance to view call sole agent Burnap + Abel now on 01303 258590.



Porch
Entrance Hall
Lounge
 17' 1" x 11' 8" (5.21m x 3.56m)
Shower Room
 10' 3" x 7' 2" (3.12m x 2.18m)
Kitchen
 9' 9" x 5' 6" (2.97m x 1.68m)
Dining Room
 16' 7" x 10' 2" (5.05m x 3.10m)
Utility Room
 6' 0" x 5' 6" (1.83m x 1.68m)
First Floor Landing
Bedroom One
 19' 1" x 12' 0" (5.82m x 3.66m)
En-Suite
Bedroom Two
 16' 11" x 12' 0" (5.16m x 3.66m)
En-Suite
Bedroom Three
 11' 10" x 9' 11" (3.61m x 3.02m)
En-Suite
Bedroom Four
 13' 4" x 10' 2" (4.06m x 3.10m)
En-Suite
Second Floor Landing
Bedroom Five
 16' 8" x 10' 1" (5.08m x 3.07m)
En-Suite

Bedroom Six
 17' 11" x 13' 10" (5.46m x 4.22m)
En-Suite
Off Road Parking
Garage
 23' 5" x 11' 1" (7.14m x 3.38m)
Rear Garden
Important Property Information

Please be advised that the property had a historic movement and a subsidence claim was placed on the properties insurance in the past. Work was undertaken to fix any problems and the property is currently insurable with no signs of further movement. This is a historic claim and is not recent.



Total area: approx. 253.2 sq. metres (2725.4 sq. feet)
Whilst every attempt has been made to ensure the accuracy of the floor plan contained here, measurements of doors, windows, rooms and any other items are approximate and no responsibility is taken for any error, omission or mis-statement. This plan is for illustrative purposes only and should be used as such by any prospective purchaser. Plan produced using PlanUp.

