



Rye Gardens, Baldock, Hertfordshire. SG7 6TB





5 Bedroom Detached House

£525,000 Freehold

Set in one of the best roads on the popular Clothall Common, is possibly one of the largest detached houses on the development. The property boasts a large lounge and kitchen, connected to a dual aspect dining room, conservatory and a cloak room make up the remaining down stairs accommodation. Upstairs are 5 bedrooms, two having an en-suite. The private rear garden is mainly laid to lawn. To the front is off street parking and access to the garage. The property is offered to the market on a chain free basis.



- Five bedrooms
- Two reception rooms
- Garage
- Detached
- Popular location
- Chain free
- Two en-suites
- EPC rating D. Council tax band E.

General Description

Entrance:

Via wooden front door leading to:

Hall:

Doors to all rooms. Stairs to first floor.

Living Room:

Abt. 20' 7" x 17' 7" (6.27m x 5.36m) Double glazed window to front aspect. Two radiators. Double glazed patio doors to garden. Double glazed door to conservatory. Fitted carpet. Stairs to study.

Kitchen:

Abt. 16' 6" x 9' 6" (5.03m x 2.90m) Range of wall and base units. Sink and drainer unit. Double glazed window to front aspect. Five ring oven and hob. Tiled floor opens to dining room.

Dining Room:

Abt. 12' 6" x 12' 6" (3.81m x 3.81m) Double glazed window to rear aspect. Double glazed door to

conservatory. Radiator. Laminate flooring.

WC:

Low level wc and hand wash basin.

Study:

Abt. 9' 0" x 7' 0" (2.74m x 2.13m) Double glazed window to rear aspect. Radiator. Low level wc and hand wash basin.

Landing:

Carpet flooring. Double glazed window to rear aspect. Doors to:

Bedroom One:

Abt. 15' 8" x 11' 7" (4.78m x 3.53m) Double glazed window to side and rear aspect. Radiator. Fitted carpet.

En-suite:

Walk in shower cubicle. Hand wash basin.

Bedroom Two:

Abt. 12' 7" x 8' 8" (3.84m x 2.64m) Double glazed bay window to front aspect. Radiator. Fitted carpet.

Bedroom Three:

Abt. 11' 2" x 10' 0" (3.40m x 3.05m) Double glazed window to front aspect. Radiator. Fitted carpet.

Bedroom Four:

Abt. 8' 6" x 6' 5" (2.59m x 1.96m) Double glazed window to rear aspect. Radiator. Fitted carpet.

Bathroom:

Panelled bath. Low level wc and pedestal wash hand basin. Double glazed window to front aspect.

Outside:

The rear garden is mainly laid to lawn with patio area. To the front, there is outside parking for one car. Access to garage.

Garage:

Via drive. Up and over door.

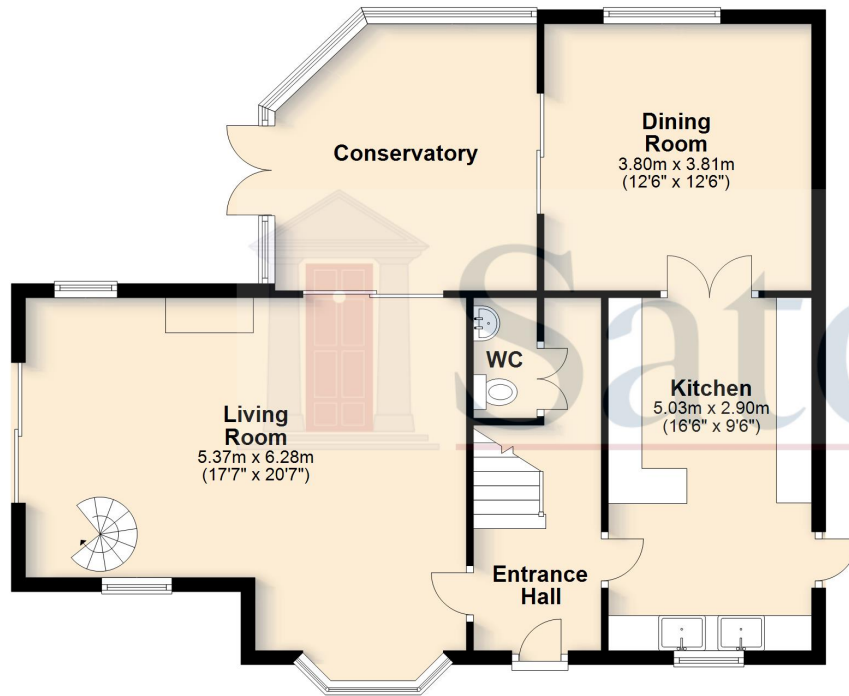




These particulars are a guide only and do not constitute an offer or a contract. The floor plan is for identification purposes only and not to scale. All measurements are approximate and should not be relied upon if ordering furniture, white goods and flooring etc. We have presented the property as we feel fairly describes it but before arranging a viewing or deciding to buy, should there be anything specific you would like to know about the property please enquire. Satchells have not tested any of the appliances or carried out any form of survey and advise you to carry out your own investigations on the state, condition, structure, services, title, tenure, and council tax band of the property. Some images may have been enhanced and the contents shown may not be included in the sale. Satchells routinely refer to 3rd party services for which we receive an income from their fee. If you would like us to refer you to one of these services please ask one of our staff who will pass your details on. We advise you check the availability of the property on the day of your viewing.



Ground Floor



First Floor



For illustrative purposes only - NOT TO SCALE - Measurements shown are approximate. The size and position of doors, windows, appliances and other features are approximate. Plan produced using PlanUp.