

1st avenue

SALES | LETTINGS | PROPERTY MANAGEMENT

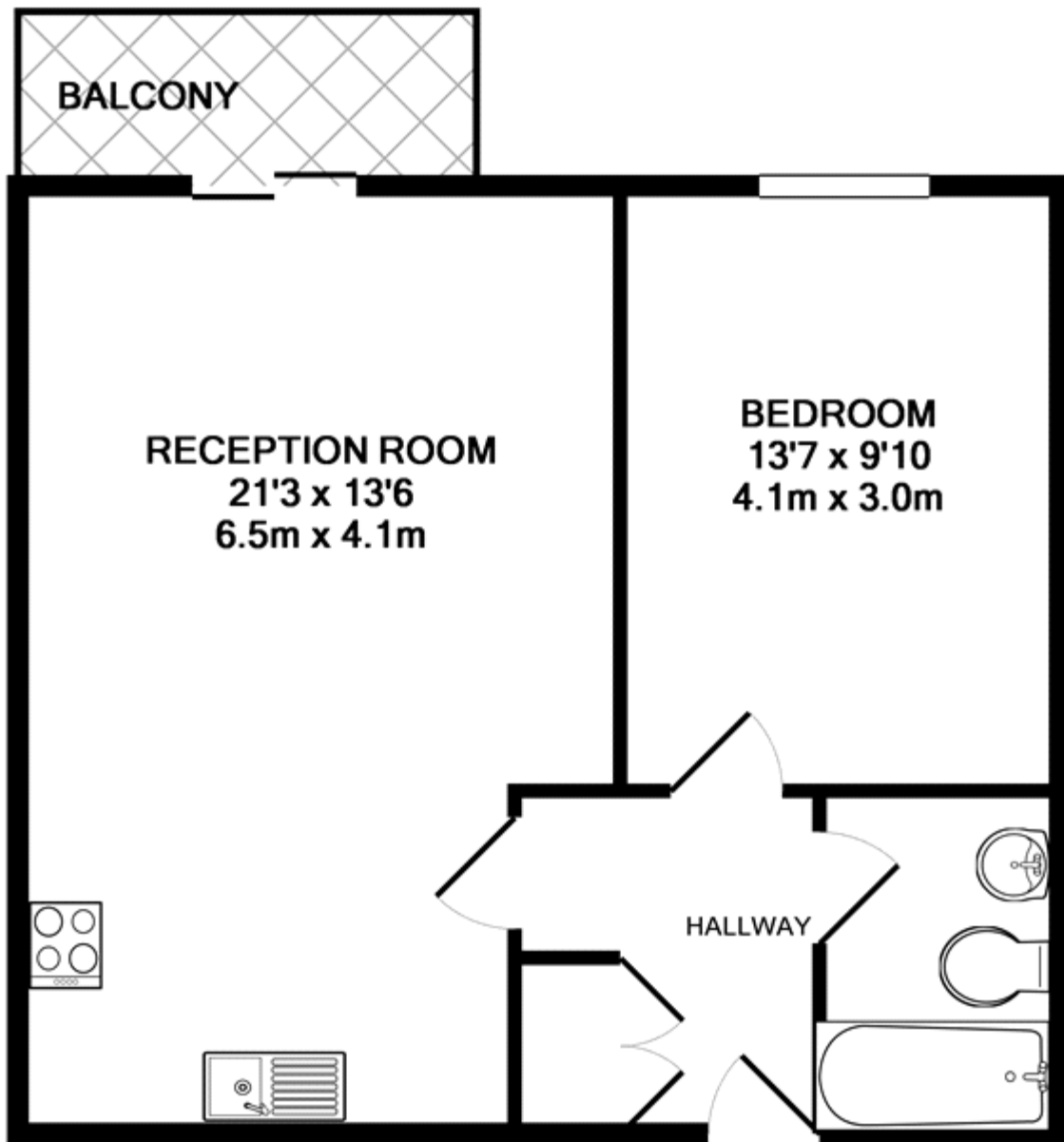


Holly Court, Greenwich, London, SE10 0BL

£1,350.00 Per month

A spacious one bedroom apartment situated on the fourth floor of this modern block in the Greenwich Millennium Village boasting fantastic unrestricted views. Further benefits from open plan kitchen/reception with balcony facing the city skyline, double bedroom and bathroom. The property offers 24 hour concierge and excellent transport links

Unit 6, 128 Metcalfe Court, West Parkside, London, SE10 0EL 020 8293 8600 www.1stavenue.co.uk



TOTAL APPROX. FLOOR AREA 495 SQ.FT. (46.0 SQ.M.)

Whilst every attempt has been made to ensure the accuracy of the floor plan contained here, measurements of doors, windows, rooms and any other items are approximate and no responsibility is taken for any error, omission, or mis-statement. This plan is for illustrative purposes only and should be used as such by any prospective purchaser. The services, systems and appliances shown have not been tested and no guarantee as to their operability or efficiency can be given

Made with Metropix ©2014

Viewing by appointment with 1st Avenue
Tel: 020 8293 8600- Email: info@1stavenue.co.uk

These particulars are intended to give a fair and substantially correct overall description for the guidance of intending purchasers and do not constitute an offer or part of a contract. Prospective purchasers and/or lessees ought to seek their own professional advice.

All descriptions, dimensions, areas, references to condition and necessary permissions for use and occupation and other details are given in good faith and are believed to be correct, but any intending purchasers should not rely on them as statements or representations of fact, but must satisfy themselves by inspection or otherwise as to the correctness of each of them.

All measurements are approximate.