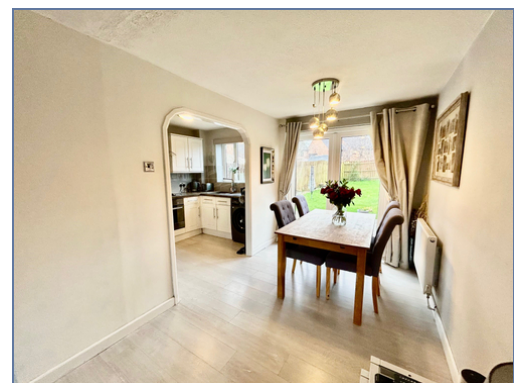




**1 Redhuish Close, Furzton, Milton Keynes,
Buckinghamshire, MK4 1HJ**

£330,000 Freehold

- £1550pm rental value
- Fantastic School Catchment
- Garage & Driveway
- Three bedroom
- Refitted Kitchen
- Large rear garden
- EPC Rating





This is a stunning three bedroom family home situated on A Cul-De-Sac in the very desirable and established development of Furzton. It is WALKING DISTANCE TO THE PICTURESQUE FURZTON LAKE and also family Parklands are very close by. The location offers convenient access for many local amenities including local shops and Westcroft Shopping Centre, good school catchment, road links as well as being a short drive to the Central Milton Keynes Train Station with a direct route to London Euston. The accommodation in brief comprises an entrance hall, lounge/diner , REFITTED KITCHEN WITH BUILT IN AND INTEGRATED APPLIANCES, first floor landing, BEDROOM ONE WITH BUILT IN STORAGE, two further bedrooms and FAMILY BATHROOM. The benefits include UPVC double glazing, gas to radiator central heating, well maintained gardens, GARAGE SITUATED TO THE SIDE WITH A DRIVEWAY IN FRONT offering off road parking for up to two vehicles.

Disclaimer

Whilst we have endeavoured to prepare our sales particulars accurately none of the services, appliances or equipment have been tested. A buyer should satisfy themselves on such matters prior to purchase. Any measurements or distances mentioned in these particulars are for guide reference only. If such particulars are fundamental to a purchase, buyers should rely on their own enquiries. All enquiries should be directed to Elevation Estate Agents in the first instance.