

4 Gardner Close

HAWKINGE, Folkestone
CT18 7QJ

£490,000 FREEHOLD

FOR SALE WITH BURNAP + ABEL... Welcome to your dream home in the quiet cul-de-sac of Gardner Close, Hawkinge! This stunning 4 bedroom detached house offers the perfect blend of luxury and comfort. Step into the spacious and inviting lounge, ideal for entertaining guests or relaxing with family. The modern kitchen/diner is a chef's paradise, complete with a breakfast area for enjoying your morning coffee. Upstairs, you'll find a stylish bathroom, and not one but two en-suites for added convenience. The low maintenance rear garden provides a tranquil oasis to unwind after a long day, while the integral garage and driveway offer plenty of parking space. Don't miss out on this fantastic opportunity to make Gardner Close your new address. Book your viewing today and start envisioning yourself living in this beautiful home!



Entrance Hall

Lounge

26' 7" x 11' 4" (8.10m x 3.45m)

Kitchen/Dining Room

24' 10" x 10' 9" (7.57m x 3.28m)

Breakfast Room

With a breakfast bar overlooking the rear garden. Currently used as a home office area by the vendors.

W.C

First Floor Landing

Bedroom One

11' 4" x 9' 4" (3.45m x 2.84m)

En-Suite

Bedroom Two

11' 3" x 11' 0" (3.43m x 3.35m)

En-Suite

Bedroom Three

11' 2" x 9' 11" (3.40m x 3.02m)

Bedroom Four

9' 5" x 7' 9" (2.87m x 2.36m)

Family Bathroom

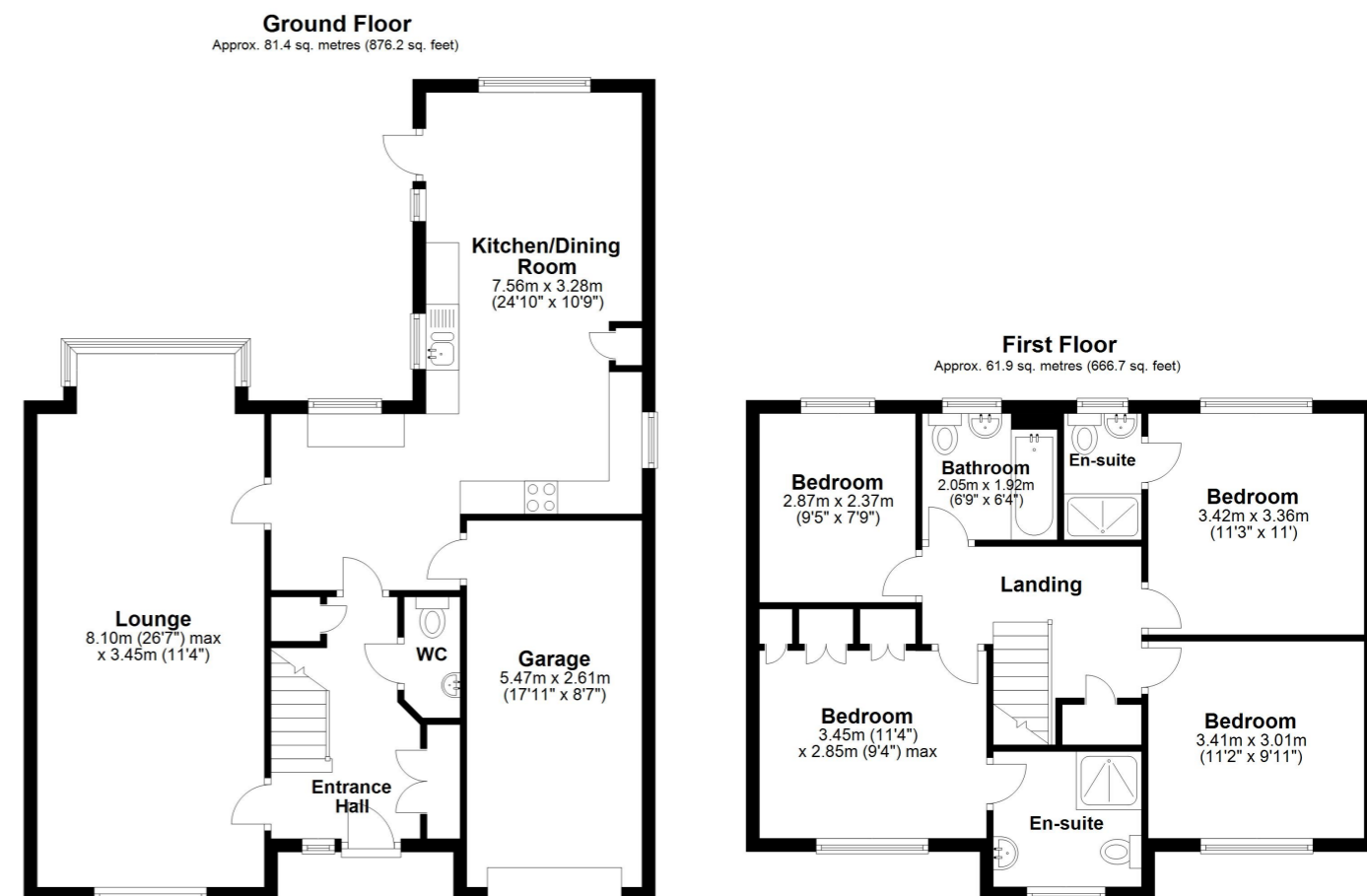
6' 9" x 6' 4" (2.06m x 1.93m)

Driveway

Garage

17' 11" x 8' 7" (5.46m x 2.62m)

Rear Garden



Whilst every attempt has been made to ensure the accuracy of the floor plan contained here, measurements of doors, windows, rooms and any other items are approximate and no responsibility is taken for any error, omission or mis-statement. This plan is for illustrative purposes only and should be used as such by any prospective purchaser.
Plan produced using PlanUp.

