



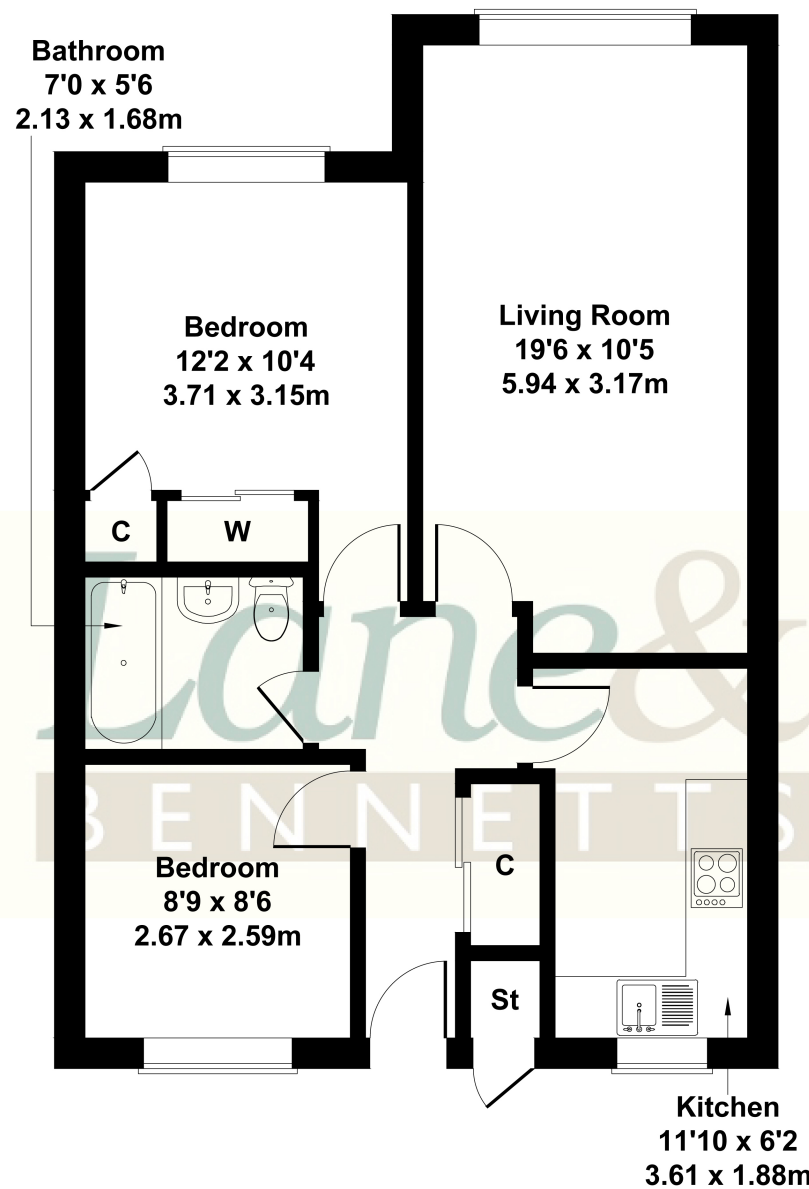
10 The Mews, Norton Road, Letchworth Garden City, Hertfordshire, SG6 1AL

£170,000

Lane & Bennetts are pleased to present this two double bedroom ground floor apartment, located in the beautiful surroundings of Norton Hall Farm. This established development is aimed at the over 50's, providing comfortable independent living.

The entrance hall has ample storage and doors to all rooms. The property has a large lounge/diner. The kitchen is fitted, with space for washing machine and fridge freezer, again with pleasant rear view. There is an integrated oven and hob, The main bedroom has a built-in wardrobe. There is a bathroom with shower over. The second bedroom has a window to the front aspect of the property.





- TWO BEDROOM APARTMENT
- SOUGHT AFTER RETIREMENT DEVELOPMENT
- GROUND FLOOR
- PLEASANT COMMUNAL GARDENS AND RESIDENTS FACILITIES
- TENURE: LEASEHOLD (NEW 90 YEAR LEASE ISSUED ON PURCHASE)
- COUNCIL TAX: B | EPC: B
- CHAIN FREE

SKETCH PLAN FOR ILLUSTRATIVE PURPOSES ONLY

All measurements walls, doors, windows, fittings and appliances, their sizes and locations, are approximate only. They cannot be regarded as being a representation by the seller, nor their agent.

Produced by Potterplans Ltd. 2024

