



Riverside Cottage, Bridge Lane, Ramsey, Isle of Man. IM8 3DE

This delightful detached house Circa 1780, is presented in immaculate order throughout with great finish and detail, real character and charm, great welcoming feel to the home as soon as you enter the property. It offers two reception rooms and a dining kitchen with pantry on the ground floor and upstairs are three bedrooms and a family bathroom.



£355,000 Freehold

PROPERTY DESCRIPTION

The charming cottage circa 1780 located in Ramsey, on the Isle of Man, is a timeless treasure that exudes historic charm and character. Nestled in a picturesque setting, this cottage is a perfect blend of antiquity and comfort.

From the outside, the cottage's traditional stone façade, adorned with timber sliding sash windows, evokes a sense of nostalgia and timeless beauty.

Upon entering, one is welcomed by a beautiful hallway with exposed stone work, amplifying the cottage's warm and inviting atmosphere. The interior showcases a range of original period features, lovingly preserved over time.

The living room, adorned with a cast iron fireplace, becomes the heart of the cottage. It exudes an ambiance of comfort and nostalgia, offering a perfect space to relax and unwind. The windows provide ample natural light.

The cottage boasts three bedrooms, each retaining its original character and vaulted ceilings with exposed beams offering cozy retreats for family or guests.

One of the highlights of the cottage is its spacious south-facing patio, which extends the living space outdoors. The patio is an ideal spot for soaking up the sunshine or enjoying al fresco dining while admiring the garden.

The cottage's location in Ramsey, on the Isle of Man, further enhances its appeal. Ramsey's picturesque surroundings, including stunning coastal views and rugged landscapes, make it a sought-after destination. The proximity to Ramsey's charming town center, with its boutique shops, cafes, and local amenities, adds to the convenience of everyday living.

In summary, this charming cottage circa 1780 in Ramsey, Isle of Man, is a rare gem that encapsulates the essence of its historical era. With its three bedrooms, inviting patio, preserved period features, this cottage offers a unique living experience where past and present seamlessly blend together.

INCLUSIONS Floor coverings, light fittings, blinds and curtains.

FEATURES

- Period Home Circa 1780
- Beautifully Presented
- Close to Amenities and Parks
- Lounge
- Dining Kitchen
- South Facing Garden
- No Onward Chain
- 3 Bedrooms



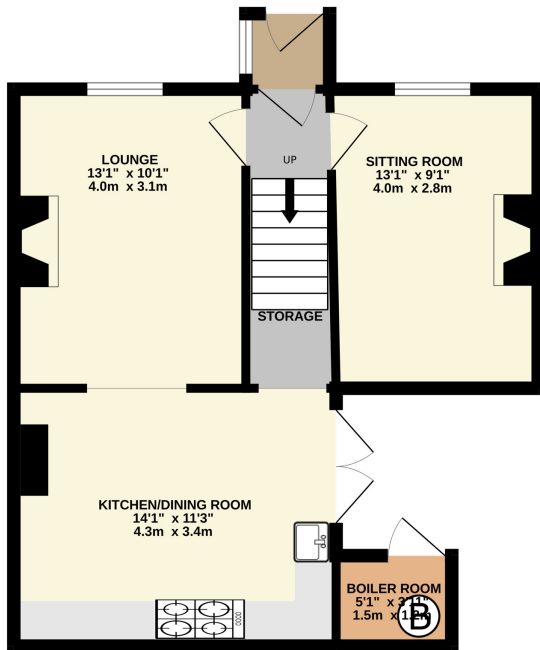
Property Images



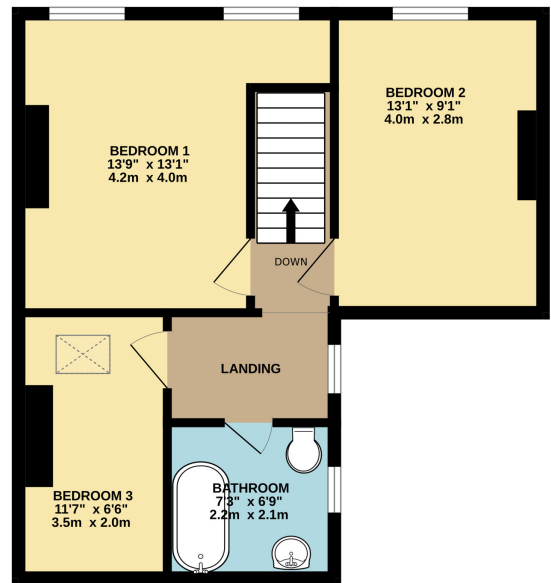
FLOORPLAN



GROUND FLOOR
472 sq.ft. (43.9 sq.m.) approx.



1ST FLOOR
445 sq.ft. (41.4 sq.m.) approx.



DETACHED HOUSE CIRCA 1780

TOTAL FLOOR AREA : 918 sq.ft. (85.3 sq.m.) approx.

Whilst every attempt has been made to ensure the accuracy of the floorplan contained here, measurements of doors, windows, rooms and any other items are approximate and no responsibility is taken for any error, omission or mis-statement. This plan is for illustrative purposes only and should be used as such by any prospective purchaser. The services, systems and appliances shown have not been tested and no guarantee as to their operability or efficiency can be given.
Made with Metropix ©2023

DISCLAIMER: Whilst Manxmove Ltd believe that these details are correct, neither Manxmove Ltd or their clients guarantee their accuracy in any way. Consequently, these details are not to be used to form part of any legally binding contract. Prospective purchasers or tenants are advised to visit this property to satisfy themselves as to the correctness of these details. Please note, we use wide angle camera lenses in order to show as much of each room as possible. This is not intended to mislead any prospective purchasers or tenants in any way and an honest verbal description is always available prior to viewing if required.

Manxmove Estate Agents - Douglas
Victoria Road, Douglas, IM2 4HD
01624 619966
info@manxmove.im