



Wellesley Road, Sutton, SM2 5BW

£235,000 Leasehold

1 Bedroom Flat for Sale

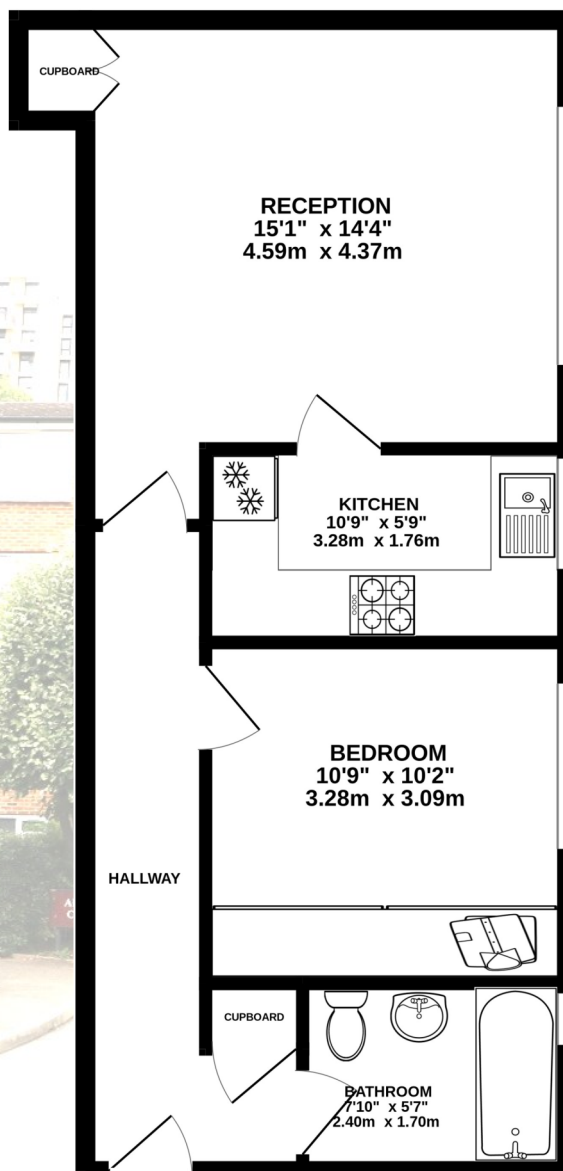


PROPERTY DETAILS

- Third (Top) Floor Flat
- Allocated Parking Space
- Well Kept Communal Areas
- Short Walk to Sutton Station
- One Double Bedroom
- Large Reception Room
- Loft Storage (Not Demised)
- Gated Development
- No Onward Chain
- 147 Year Lease
- £85pcm Service Charges
- EPC Rating = D

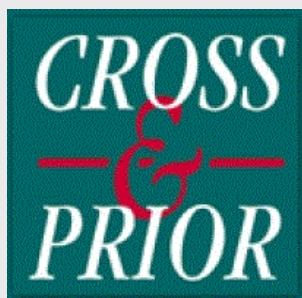


THIRD FLOOR



TOTAL APPROX. FLOOR AREA:
46.2 SQ.M. / 497 SQ.FT.

Cross & Prior endeavour to maintain accurate depictions of properties in Floor Plans and descriptions, however, these are intended only as a guide and purchasers must satisfy themselves by personal inspection.



Established Since 1910

CONTACT

103 High Street, Colliers Wood,
London SW19 2JF

enquiries@crossprior.co.uk
www.crossprior.co.uk

0208 715 0555

VIEWING ARRANGEMENTS

Strictly by appointment with
Cross & Prior

