



Offers in excess of £490,000 Freehold



Stapleton Road, Bexleyheath, Kent DA7
5QQ



PROPERTY DESCRIPTION

RE/MAX SELECT are delighted to offer for sale this 1930s Feakes&Richards semi-detached house, close to schools, amenities, and transport links including Bexleyheath station.

This property comprises 3 bedrooms, through-lounge, utility room, and upstairs family bathroom. Further benefits include garage, off street parking, approximately 60ft garden, double glazing, and gas central heating.





ROOM DESCRIPTIONS

Ground Floor

Entrance Hallway

Carpeted, radiator, understairs cupboards, double glazed frosted windows; carpeted stairs leading to first floor.

Living / Dining Room

Carpeted, fireplace, radiators, double glazed bay window to front, double glazed sliding door to rear.

Kitchen

Tiled flooring; range of wall and base units with complementary worktops and tiled splashback; stainless steel sink and drainer unit with mixer tap; gas hob with fitted extractor hood over; oven, double glazed windows.

Utility Room

Tiled flooring; range of wall and base units with complementary worktops; space and connections for fridge/freezer; double glazed window; door leading to rear garden; door leading to garage.

First Floor

Landing

Carpeted, double glazed frosted window.

Bedroom

Carpeted, radiator, built-in wardrobes, double glazed bay window.

Bedroom

Carpeted, radiator, built-in wardrobes, double glazed window.

Bedroom

Carpeted, radiator, double glazed bay window.

Bathroom

Carpeted, part-tiled walls; panelled bath with shower-mixer; walk-in shower enclosure; wash-hand basin, w/c, heated towel-rail, double glazed windows.

External

Front Driveway

Off street parking.

Rear Garden

Approximately 60ft; patio area, lawn, mature trees and shrubs; shed.

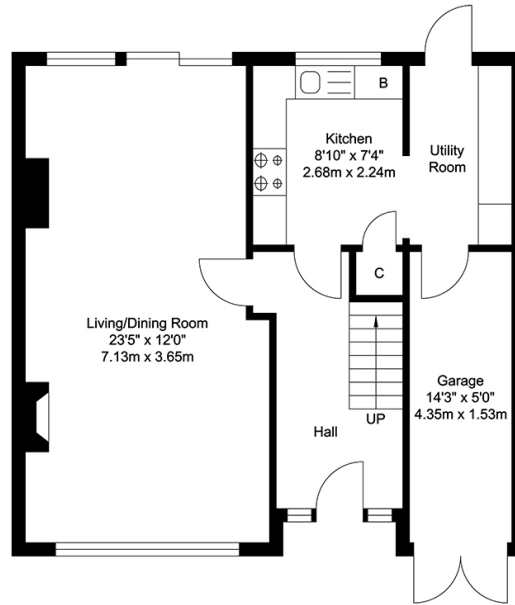
Garage

Information

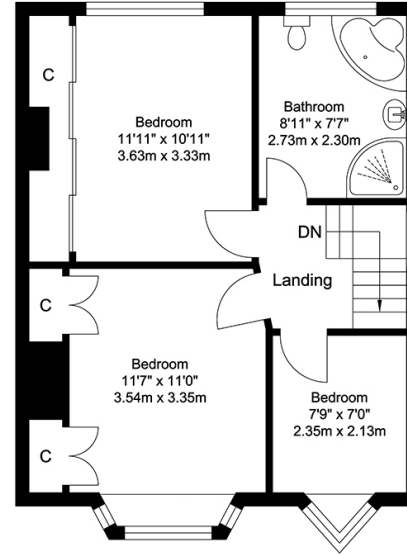
- Close to sought-after schools incl grammar schools
- Easy access to A2 / M25
- 0.9 miles (approx) to Bexleyheath Station
- 1.2 miles (approx) to Abbey Wood Station with Crossrail / Elizabeth Line
- 1.2 miles (approx) to Broadway Shopping Centre
- Council Tax: Band E



FLOORPLAN



Ground Floor
Approximate Floor Area
546.48 SQ.FT.
(50.77 SQ.M.)



First Floor
Approximate Floor Area
445.84 SQ.FT.
(41.42 SQ.M.)

TOTAL APPROX FLOOR AREA 992.32 SQ. FT / 92.19 SQ. M

For Identification Purposes Only.

