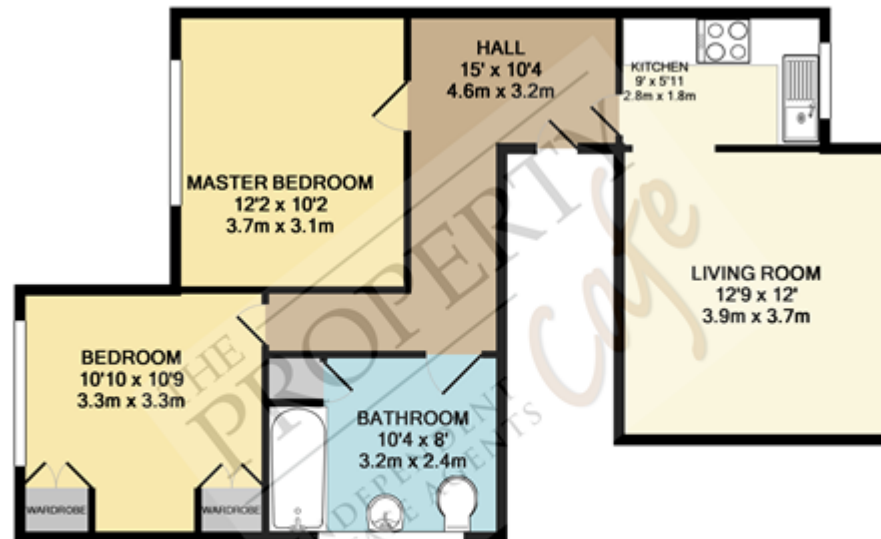




Flat 1, 9A Collington Avenue, Bexhill On Sea, East Sussex, TN39 3PX
£1,100 pcm



TOTAL APPROX. FLOOR AREA 640 SQ.FT. (59.5 SQ.M.)

Whilst every attempt has been made to ensure the accuracy of the floor plan contained here, measurements of doors, windows, rooms and any other items are approximate and no responsibility is taken for any error, omission, or mis-statement. This plan is for illustrative purposes only and should be used as such by any prospective purchaser. The services, systems and appliances shown have not been tested and no guarantee as to their operability or efficiency can be given.
Made with Metropix ©2013

Property Cafe are delighted to offer to the lettings market this fantastic first floor flat situated in the sought Collington which is just a short distance into Bexhill town centre and the mainline railway station and fantastic array of shops bars/restaurants. Internally this well presented property comprises, entrance hallway leading onto a recently installed modern fitted kitchen with integrated oven and hob, a very spacious lounge/diner, two good size double bedrooms and a large bathroom with shower over bath. Additional benefits include gas fired central heating, full double glazing, neutral decor/carpets and ample internal storage. The property is available late October 2023 on a long term let and early internal viewings are highly recommended, A minimum annual income of £33,000 per household is required to be eligible for this property and for additional information or to arrange your internal viewing, please call our office 01424 224488.



- Sought after Collington location.
- First floor flat to let.
- Gas central heating and double glazing.
- Close to mainline railway and local amenities.
- Two double bedrooms.
- Good size lounge/diner.
- Recently fitted modern kitchen.
- Large bathroom with shower over bath.
- Well presented throughout.
- Available late October 2023.