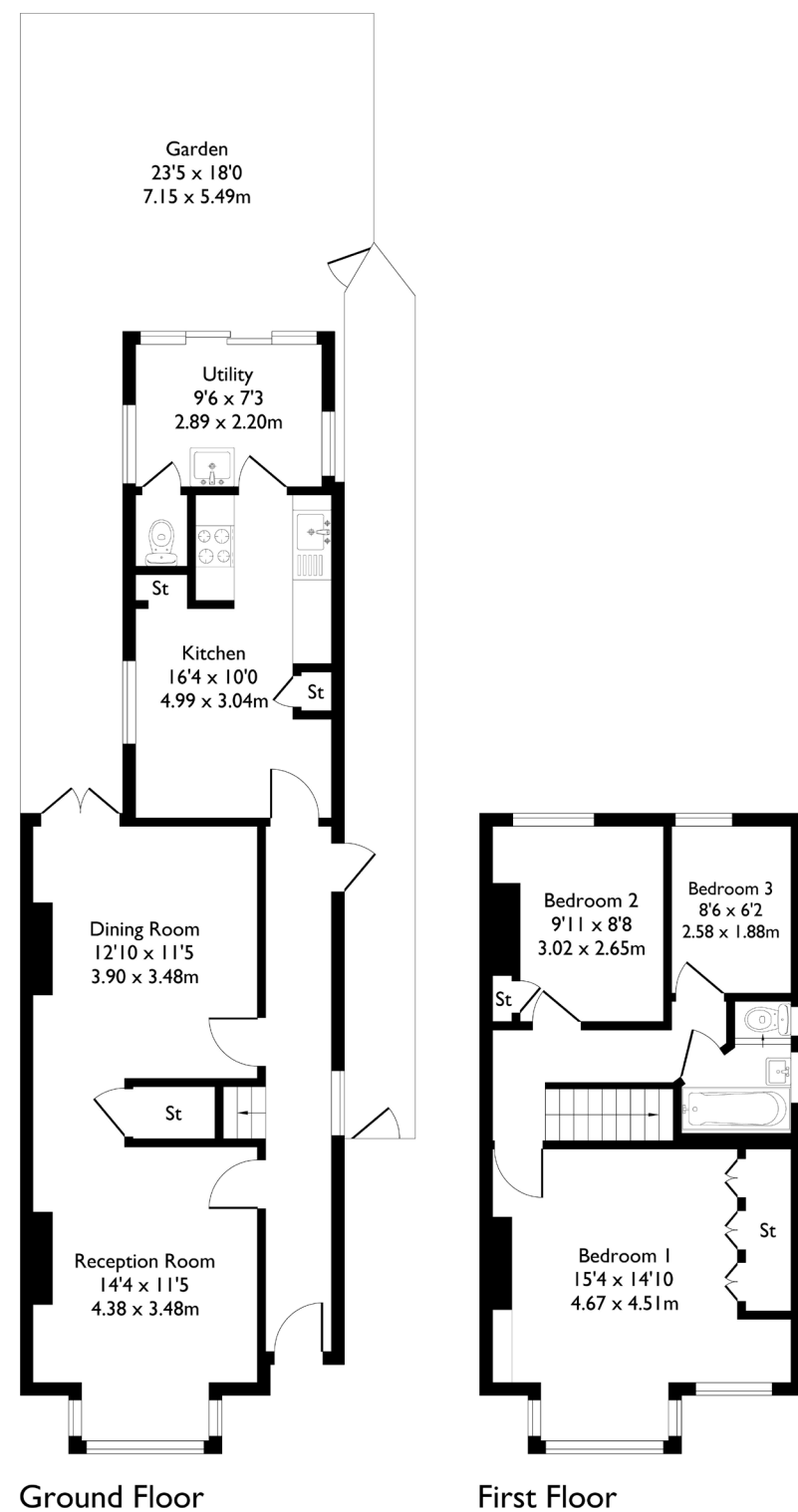
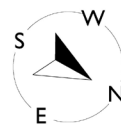


Sydney Road, London, W13

Approximate Floor Area = 104.9 sq m / 1130 sq ft



3 BEDROOM HOUSE

Sydney Road, W13

Guide Price £800,000 - £825,000

Welcome to this fantastic semi-detached home in the heart of West Ealing.

The property offers three well-proportioned bedrooms and a family bathroom on the first floor; W/C downstairs. On entering, you are greeted by a spacious reception room to the left, which flows seamlessly through to a second reception room — creating a versatile and inviting living space.

FEATURES

- Three Bedrooms
- One Bathroom/Downstairs W/C/
- Separate Kitchen/Dining
- Northfield Amenities
- Northfields Station/West Ealing Station
- Oaklands Primary School/Elthorne Park High School
- EPC Rating D



3 BEDROOM HOUSE

Sydney Road, W13

To the rear, there is a generous kitchen with a dedicated dining area, leading into a lean-to that opens out to the garden.

The garden also benefits from convenient side access, adding to the practicality of the home. This property offers excellent potential to extend to the rear and into the loft (subject to the usual planning consents), making it an ideal opportunity for buyers looking to add value.

Perfectly positioned within the sought-after Oaklands Primary School and Elthorne High School catchments, the home is also within easy reach of the amenities of Northfields and West Ealing. West Ealing Station (Elizabeth Line) and Northfields Station are both nearby, providing excellent transport links into Central London and beyond.

EPC Rating D.

