



BarrettMove



108 Marlow Bottom, Marlow, Buckinghamshire SL7 3PH
Guide Price £695,000 - Freehold



PROPERTY SUMMARY

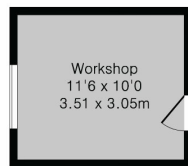
Barrett Move presents this deceptively spacious three bedroom detached house with a large garden and double garage in Marlow Bottom.

POINTS OF INTEREST

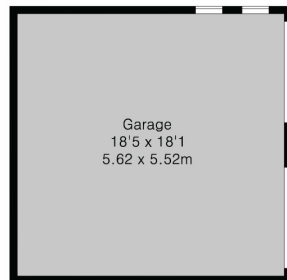
- *****CHAIN FREE*****
- Large sloping garden with woodland behind
- Off street parking for several cars
- In need of updating
- Opportunity to create a special family home
- 2 minute walk to Burford School
- Close to village amenities and woodland walks



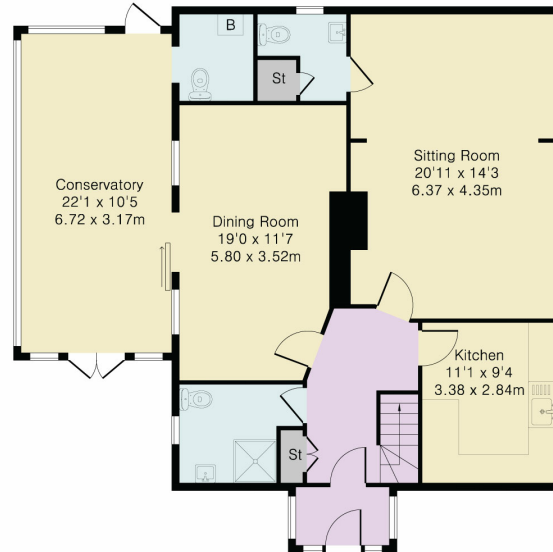
Approximate Gross Internal Area 2291 sq ft – 213 sq m
 Ground Floor Area 1113 sq ft – 103 sq m
 First Floor Area 729 sq ft – 68 sq m
 Garage Area 334 sq ft – 31 sq m
 Outbuilding Area 115 sq ft – 11 sq m



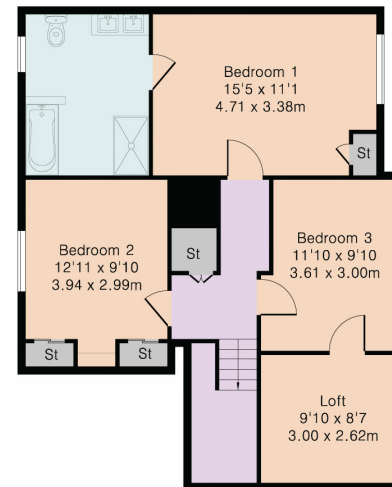
Outbuilding



Garage



Ground Floor



First Floor



Although Pink Plan Ltd ensures the highest level of accuracy, measurements of doors, windows and rooms are approximate and no responsibility is taken for error, omission or misstatement. These plans are for representation purposes only as defined by RICS code of measuring practise. No guarantee is given on total square footage of the property within this plan. The figure icon is for initial guidance only and should not be relied on as a basis of valuation.

Energy Efficiency Rating		Current	Potential
<i>Very energy efficient - lower running costs</i>			
(92+)	A		
(81-91)	B		86
(69-80)	C		
(55-68)	D	63	
(39-54)	E		
(21-38)	F		
(1-20)	G		
<i>Not energy efficient - higher running costs</i>			
England, Scotland & Wales			EU Directive 2002/91/EC