



Lapworth House, Coppies Grove, London, N11

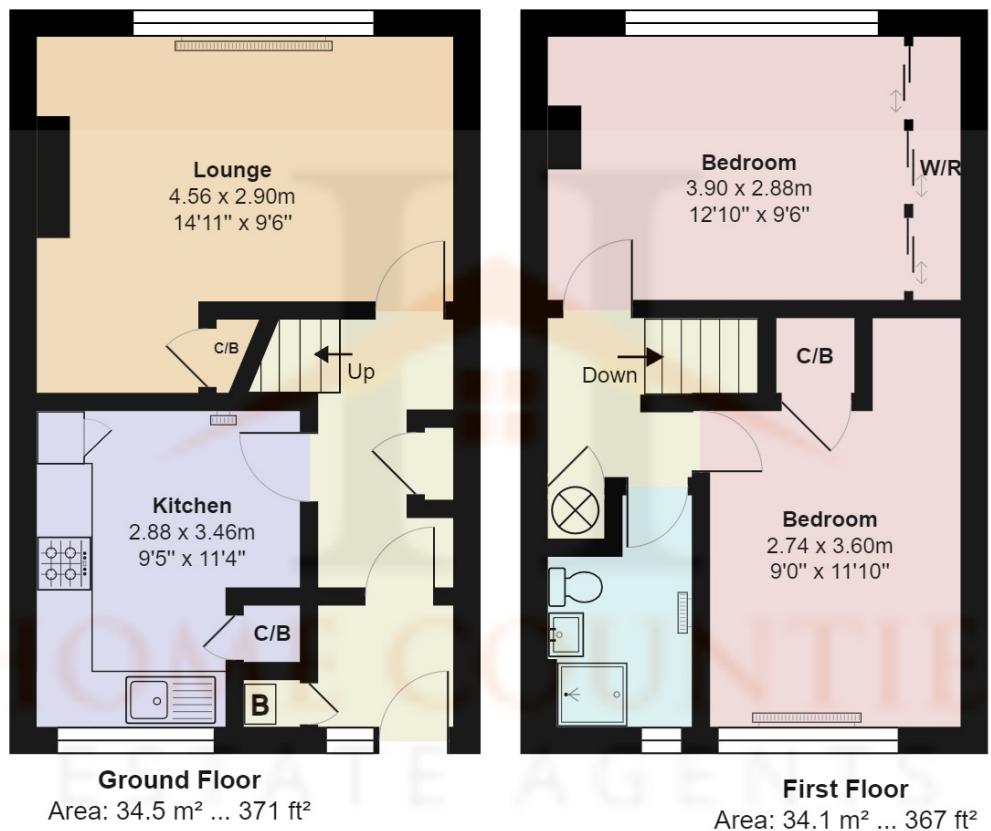
£295,000

- **0.5 MILES TO ARNOS GROVE**
- **TWO DOUBLE BEDROOMS**
- **SMALL GARDEN**
- **87 YEAR LEASE**
- **0.3 MILES TO NEW SOUTHGATE STATION**
- **GROUND / FIRST FLOOR**
- **PURPOSE BUILT FLAT**

Lapworth House, Coppies Grove, London, . N11

£295,000 Leasehold

Attention first time buyers and buy to let landlords. This purpose built ground / first floor maisonette is ideally situated just moments from Amos Grove Tube Station and within easy reach of local shops and amenities. The property benefits from lounge, separate kitchen and storage on the ground floor and bathroom and two double bedrooms on the first floor, plus own small garden and storage unit.



Oakleigh Road South, London N11

Total Area: 68.6 m² ... 738 ft²

All measurements are approximate and for display purposes only

