



daniels
danielsestateagents.co.uk

daniels
danielsestateagents.co.uk



Blenheim Gardens, Willesden Green, London NW2 4NS
£600,000 - Share of Freehold



PROPERTY DESCRIPTION

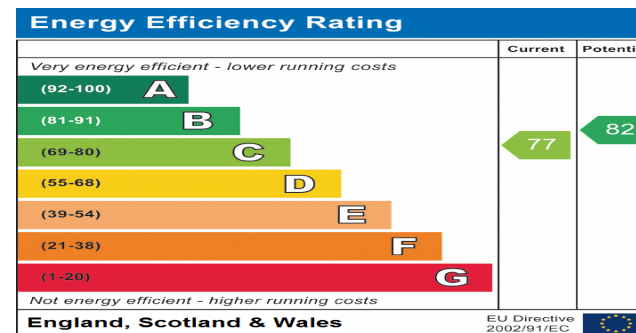
NO UPPER CHAIN... Offering over 700sqft of living space is BEAUTIFULLY PRESENTED TWO DOUBLE BEDROOM APARTMENT set on the second floor of this ATTRACTIVE PERIOD STYLE BUILDING with only four apartments, located within a moments walk to Willesden Green Jubilee line station and a number of popular shops and restaurants including numerous cafes, Gails & Sanzio restaurant.

Benefits include BRIGHT & SPACIOUS THROUGHOUT, BAY FRONTED RECEPTION ROOM, MODERN FULLY FITTED KITCHEN, TWO BATHROOMS (one master to ensuite), TWO DOUBLE BEDROOMS, PRIVATE GATED PARKING SPACE with BIKE STORAGE, WELL MAINTAINED FRONT GARDENS.

The beautiful open spaces of Gladstone Park is just 10 minutes approx walk away, Blenheim Gardens is a beautiful tree lined street in the heart of Willesden Green.

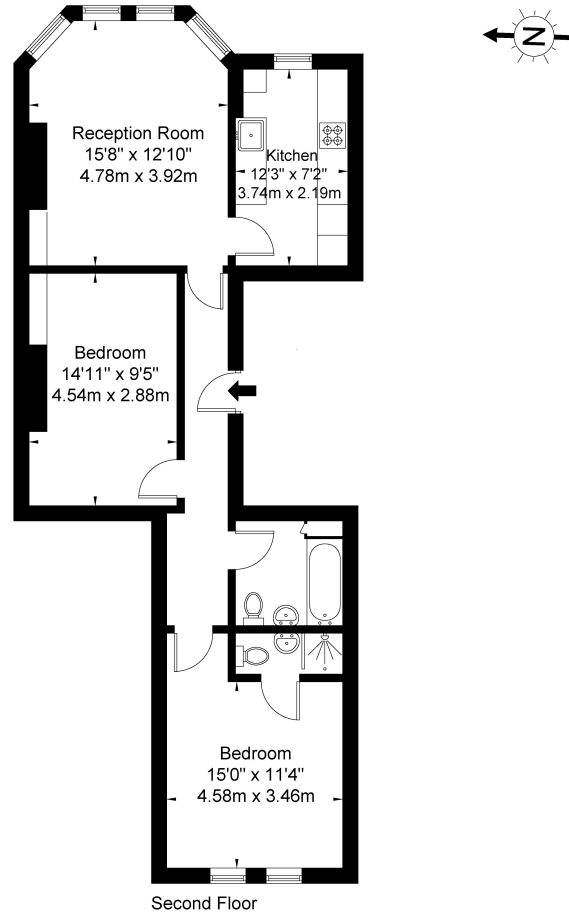
POINTS OF INTEREST

- TWO BEDROOMS
- TWO BATHROOMS
- BEAUTIFULLY PRESENTED
- MODERN KITCHEN
- PRIVATE PARKING SPACE
- CLOSE TO WILLESDEN GREEN STATION ZONE 2
- SPACIOUS AND BRIGHT
- SHARE OF FREEHOLD



Carlton Court Blenheim Gardens Willesden Green NW2 4NS

Approx Gross Internal Area = 69.1 sq m / 743 sq ft



Second Floor

Ref

Copyright

**BLEU
PLAN**

The Floor plan is not to scale and measurements and areas shown are approximate and therefore should be used for illustrative purposes only. The plan has been prepared in accordance with the RICS code of Measuring Practice and whilst we have confidence in the information produced it must not be relied on. If there is any aspect of particular importance, you should carry out or commission your own inspection of the property.
Copyright © BLEUPLAN