



Peppermint Road

Hitchin | Hertfordshire | SG5 1RY

www.stonegate-estates.co.uk



PEPPERMINT ROAD

Property Description

Enjoy modern town centre living in this beautifully presented top floor apartment, perfectly positioned within walking distance of Hitchin's vibrant shops, cafés and mainline train station.

Flooded with natural light from its triple-aspect design, the apartment offers a spacious and contemporary feel throughout.

The inviting living/dining space opens onto a charming Juliet balcony, creating the perfect spot to relax and unwind. A sleek refitted kitchen adds to the sense of style and practicality.

Both bedrooms are generously sized, while the well-appointed bathroom provides a high-quality finish.

Secure underground parking ensures peace of mind, while the top floor position adds a sense of privacy and calm.

Whether you're a professional seeking easy access to London, or simply looking to enjoy the lively atmosphere of Hitchin's town centre on your doorstep, this apartment is an exceptional opportunity not to be missed.

£300,000 Leasehold



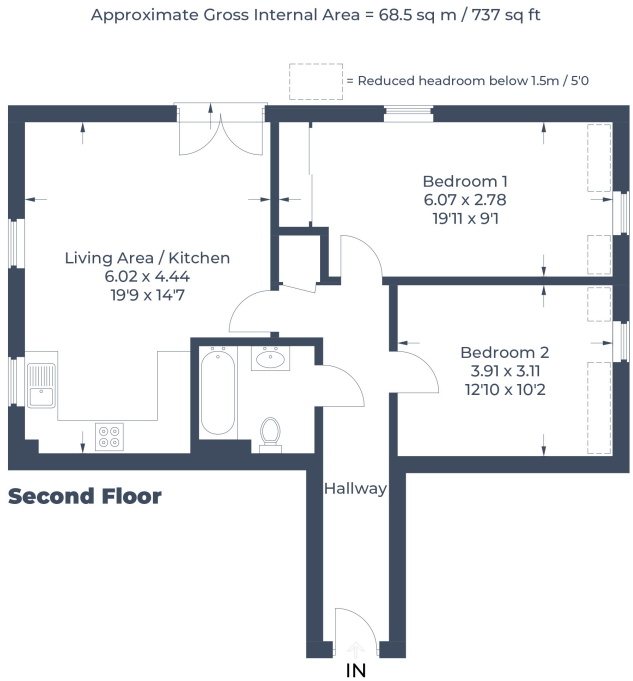


Illustration for identification purposes only,
measurements are approximate, not to scale.
© CJ Property Marketing Produced for Stonegate Estates



- Two Bedroom Apartment
- Town Centre Location
- Under Ground Secure Parking
- Triple Aspect
- Ideal First Time Buy or Investment
- Close to Train Station
- Beautiful Condition Throughout

EPC Rating: C

Stonegate Estate Agents

01462 438979

sales@stonegate-estates.co.uk | www.stonegate-estates.co.uk

