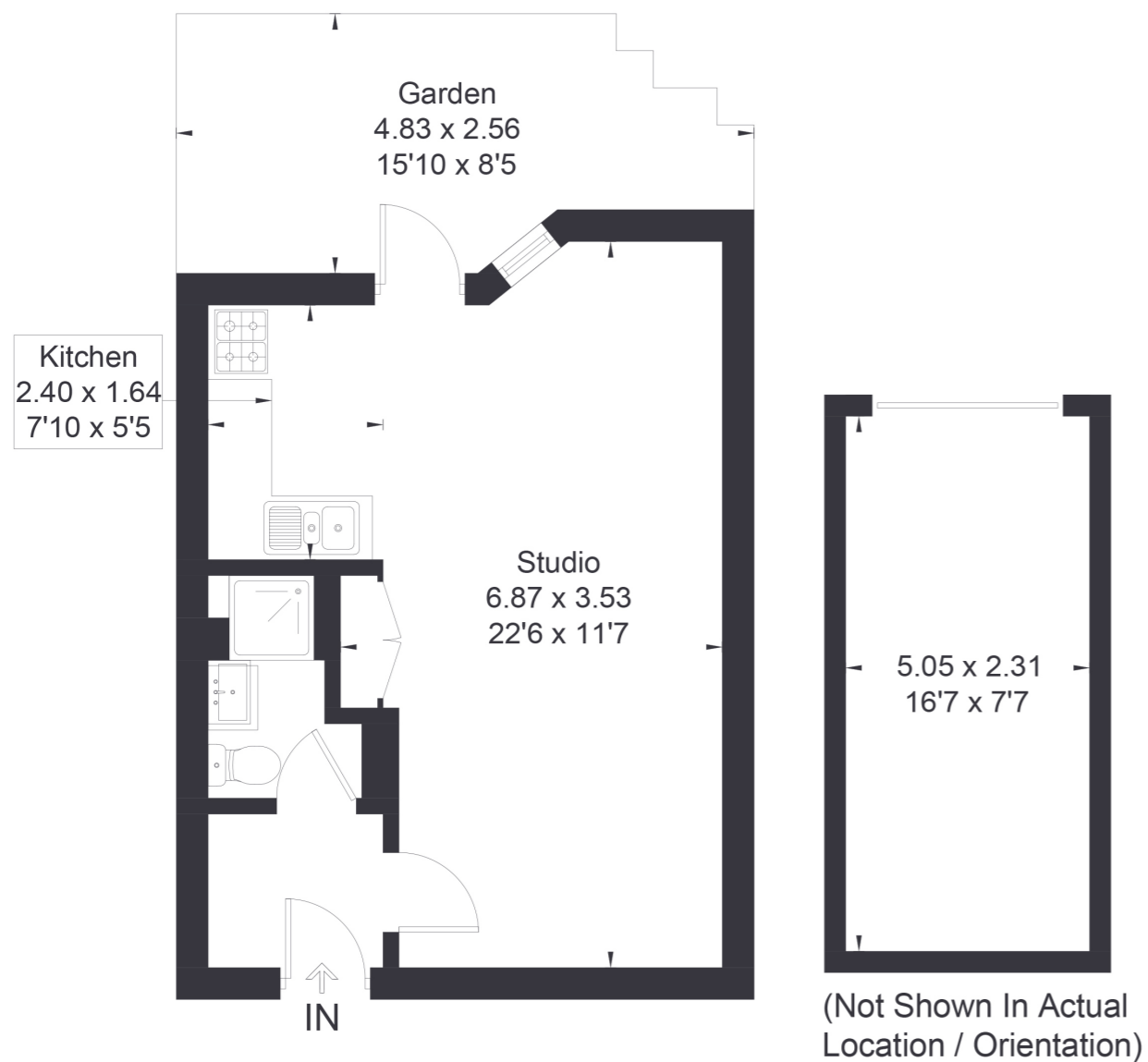


Wellesley Road, W4

Approximate Floor Area = 31.6 sq m / 340 sq ft
Outbuilding = 11.6 sq m / 125 sq ft
Total = 43.2 sq m / 465 sq ft



STUDIO FLAT

Wellesley Road, W4
£285,000

FEATURES

- Communal Gardens
- Lock-Up Garage
- Chain Free
- Close to Gunnersbury Tube Station
- Off-Street Parking
- Modern Shower Room

Welcome to this well located studio in the heart of Chiswick.

Just a two minute walk from Gunnersbury Station and a 15 minute stroll to Chiswick High Road, this property offers both convenience and charm.



STUDIO FLAT

Heston House, W4

The spacious open plan kitchen and living area are filled with natural light and provide ample storage.

The studio's large living space opens directly onto a communal garden, perfect for enjoying some outdoor time. Additionally, the property comes with the added benefits of a garage and parking. A fantastic opportunity in a prime Chiswick location! EPC Rating E.

