



98 Needlepin Way, Buckingham, MK18 7RB

£156,000 Leasehold

- Four double bedroom
- Desirable location of Buckingham
- Downstairs cloakroom
- 40% Shared ownership
- Rent and service charge combined £541.96
- Chain Free!
- £5,000 fixture and fittings
- EPC Rating

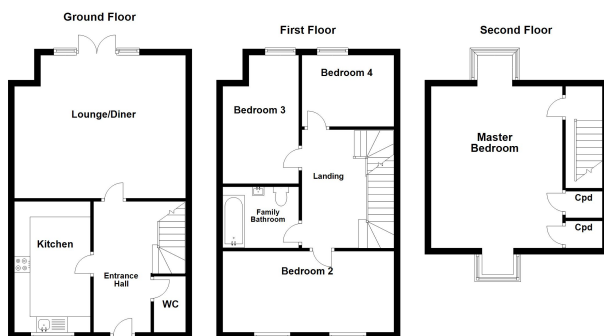




*** 40% Shared Ownership *** Built in 2015 is this brilliant four bedroom mid terrace townhouse located in the popular area of Buckingham. The accommodation comprises an entrance hall, kitchen, lounge, downstairs cloakroom, four good size bedrooms and family bathroom. Outside there is a rear garden and allocated parking for two vehicles. The housing association is Paradigm and the ground rent and service charge payable to them combined is £541.96 pcm. There is also a fixture and fittings charge of £5,000. Please call the elevation team today to arrange your viewing.

Disclaimer

Whilst we have endeavoured to prepare our sales particulars accurately none of the services, appliances or equipment have been tested. A buyer should satisfy themselves on such matters prior to purchase. Any measurements or distances mentioned in these particulars are for guide reference only. If such particulars are fundamental to a purchase, buyers should rely on their own enquiries. All enquiries should be directed to Elevation Estate Agents in the first instance.



Elevation estate agents
Plan produced using PlanUp.