



Tudor Crescent
Portsmouth
Hampshire
PO6 2SR

Offers In Excess Of £385,000

bettermove

Tudor Crescent Portsmouth

Bettermove are proud to present this 5 bedroom semi-detached house in Portsmouth.

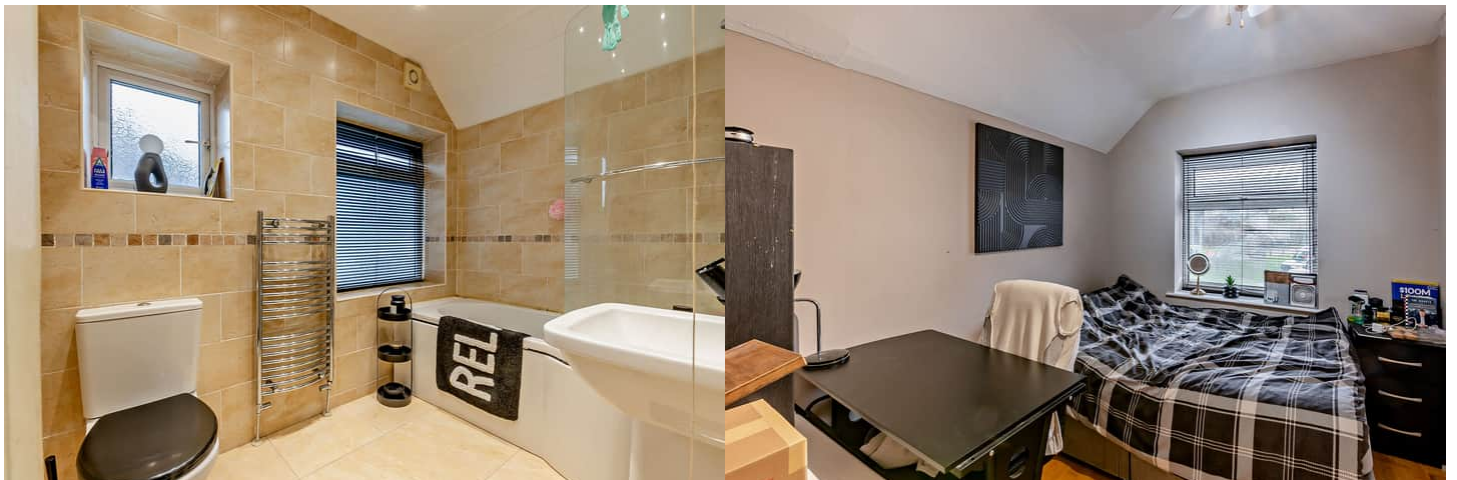
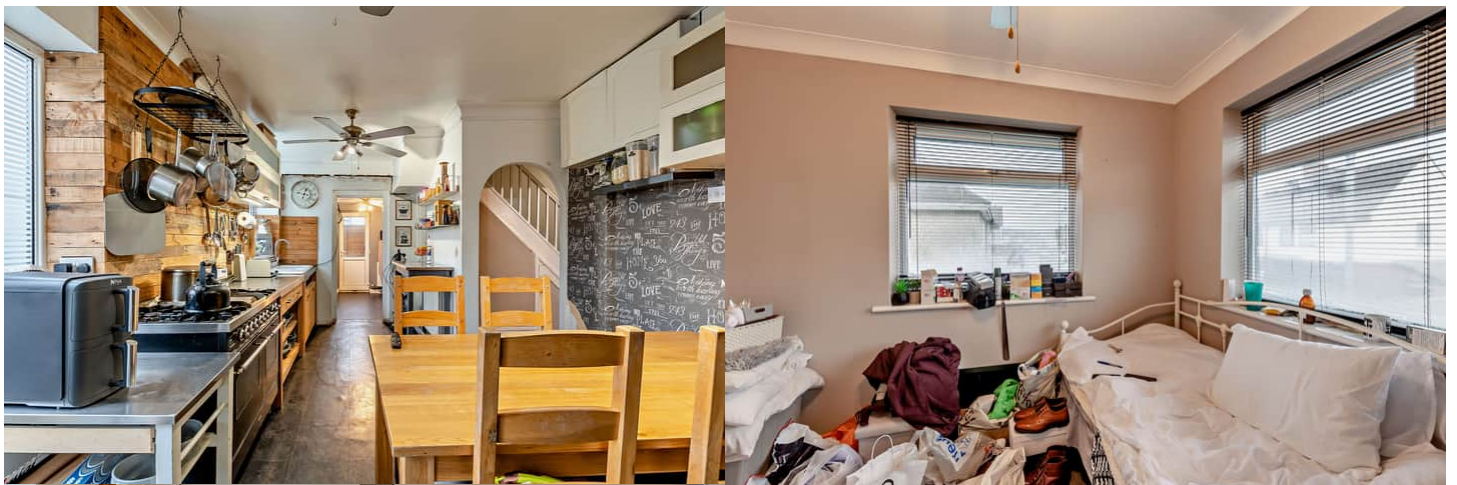
The property benefits from double glazing, gas central heating throughout and has off street parking available.

The council tax band is C.

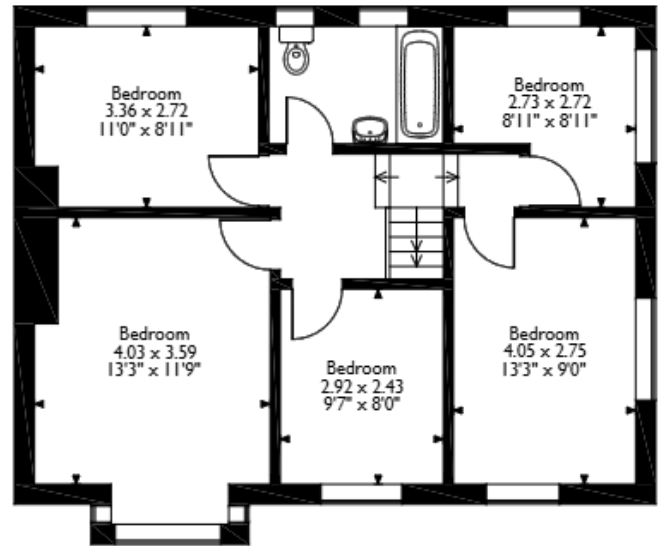
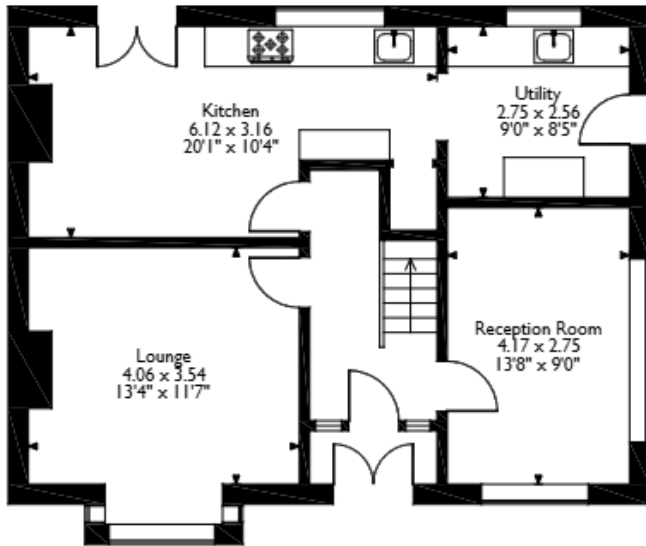
The interior of this beautifully presented property comprises a spacious living room, dining room, utility room and fitted kitchen on the ground floor. The first floor consists of 5 bedrooms and the family bathroom. The exterior boasts a private rear garden, perfect for enjoying the summer months.

Located in the popular area of Cosham, the property is close to a range of amenities, including shops, supermarkets, restaurants and pubs. Excellent transport connections can be found from the A27, Cosham train station and local bus routes.

This exciting opportunity should not be missed! All enquiries can be made through Bettermove on 0330 004 0050.



Tudor Crescent, Portsmouth
Approximate Gross Internal Area
126 Sq M/1356 Sq Ft



Please note that the location of doors, windows and other items are approximate and this floorplan is to be used for illustrative purposes only. Unauthorized reproduction is prohibited.

Energy Efficiency Rating		
	Current	Potential
Very energy efficient - lower running costs		
(92+) A		
(81-91) B		
(69-80) C		80
(55-68) D	61	
(39-54) E		
(21-38) F		
(1-20) G		
Not energy efficient - higher running costs		
England, Scotland & Wales		EU Directive 2002/91/EC



20-22 Bridge End, Leeds, LS1 4DJ
t: 0330 004 0050 e: hello@bettermove.co.uk
www.bettermove.co.uk

Please Note: These particulars, whilst believed to be accurate are set out as a general outline only for guidance and do not constitute any part of an offer or contract. Intending purchasers should not rely on them as statements of representations of fact, but must satisfy themselves by inspection or otherwise as to their accuracy. No person in this firm's employment has the authority to make or give any representation or warranty in respect of the property.