



Ashfield Court Everton, Doncaster

£549,950

Ashfield Court

Everton, Doncaster

Immaculate FOUR BEDROOM Detached Family Home

Property Overview

- Enjoying Panoramic Views of Open Countryside to the Rear
- Contemporary Kitchen Diner Boasting Reputable Bosch Appliances
- Ample Lounge Featuring a Media Wall with Bluetooth Controlled, Multi-Functional LED Electric Fire Inset
- Private Driveway Catering for Two Vehicles & Attached Double Garage



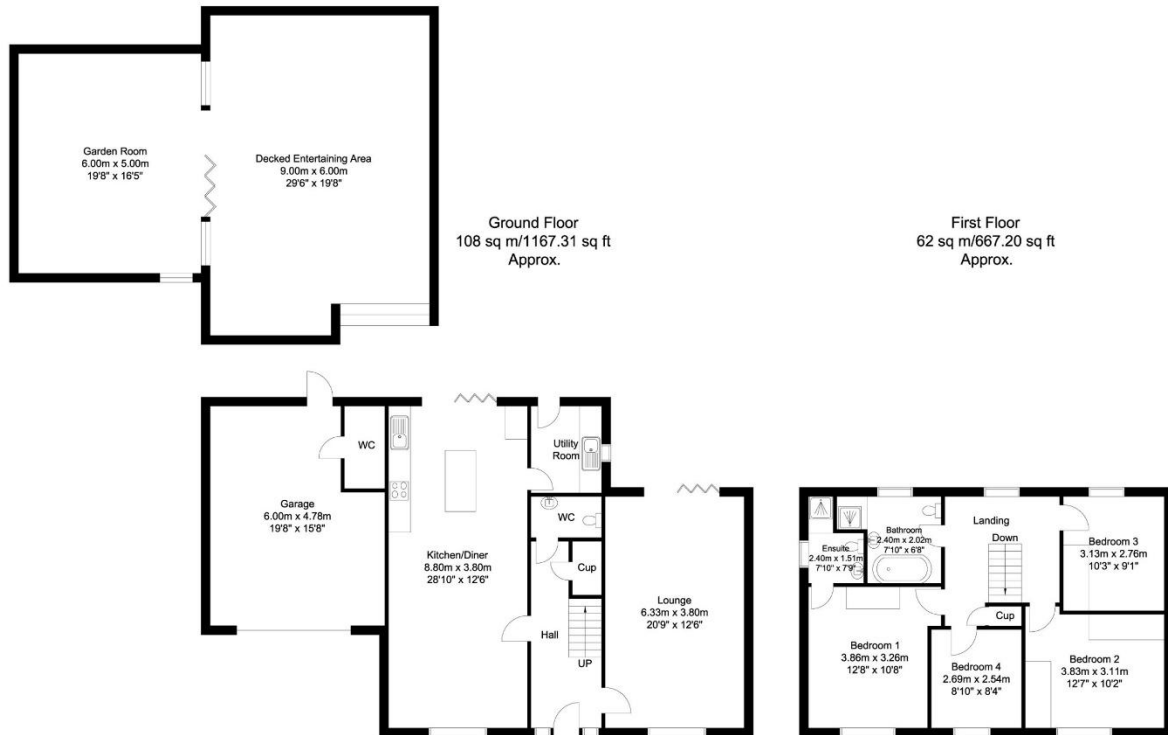
We are thrilled to welcome this immaculate FOUR BEDROOM detached family home to the market, enjoying panoramic views of open countryside to the rear. Boasting beautiful finishing touches throughout, the contemporary living accommodation briefly comprises a welcoming entrance hall, ample lounge, kitchen diner boasting reputable Bosch appliances, utility room, handy ground floor WC, galleried landing, master bedroom complete with master en suite, three further bedrooms, one currently utilised as a home office, and a four piece family bathroom. Planning permission was granted in May 2023 to construct further accommodation above the garage, alongside a two storey extension to the rear, should the purchaser wish to extend further- PLANNING REF: 23/00165/HSE. The frontage sees a private driveway catering for two vehicles and an attached double garage, whilst the well stocked, two tier rear garden features an impressive garden room, showcasing a professionally installed bar with draft taps, which opens up onto a substantial composite decking space with glass balustrade, ideal for entertaining over the summer months. Resting on a small, modern development on a secluded country road in Everton, Ashfield Court enjoys two bustling village pubs and a farm shop in its locality, with easy access to the nearby market towns of Bawtry, Retford and Gainsborough. Viewings are highly recommended to fully appreciate the extensive accommodation and idyllic location being offered for sale.

- Enclosed, Two Tier Rear Garden Featuring an Impressive Garden Room with Professionally Installed Home Bar & Decked Entertainment Space
- Resting on a Small, Modern Development on a Secluded Country Road in Everton
- Planning Permission Granted in May 2023 to Extend- PLANNING REF: 23/00165/HSE
- Council Tax Band: E EPC Rating: C

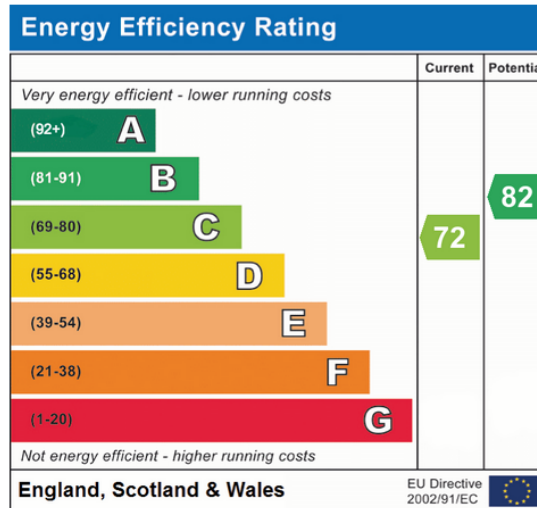


Road links are served by the A631 & A638 which offer greater transport links throughout the UK. Retford Train Station provides a direct line to London King's Cross in less than 90 minutes at selected times.





Whilst every attempt has been made to ensure the accuracy of the floor plan contained here, no responsibility is taken for incorrect measurements of doors, windows, appliances and rooms or any error, omission or misstatement. Exterior and interior walls are drawn to scale based on interior measurements. Any figure given is for initial guidance only and should not be relied on as a basis of valuation. The plans are for marketing purposes only and should only be used as such. No guarantee is given on the accuracy of the total square footage/ metrage if quoted on this plan..
CP Property Services @2025



Tenure & Charges: Freehold- Vacant possession will be given upon completion

Selling your home?

If you are considering selling your home please contact us today for your no obligation free market appraisal.

Our dedicated and friendly team will assist you 6 days a week. Get in touch today!

Tel: 01777 566400



Property & Estates Consulting

11 Grove Street, Retford, DN22 6JP

01777 566400

www.alexanderjacob.co.uk

IMPORTANT: we would like to inform prospective purchasers that these sales particulars have been prepared as a general guide only. A detailed survey has not been carried out, nor the services, appliances and fittings tested. Room sizes should not be relied upon for furnishing purposes and are approximate. If floor plans are included, they are for guidance only and illustration purposes only and may not be to scale. If there are any important matters likely to affect your decision to buy, please contact us before viewing the property.