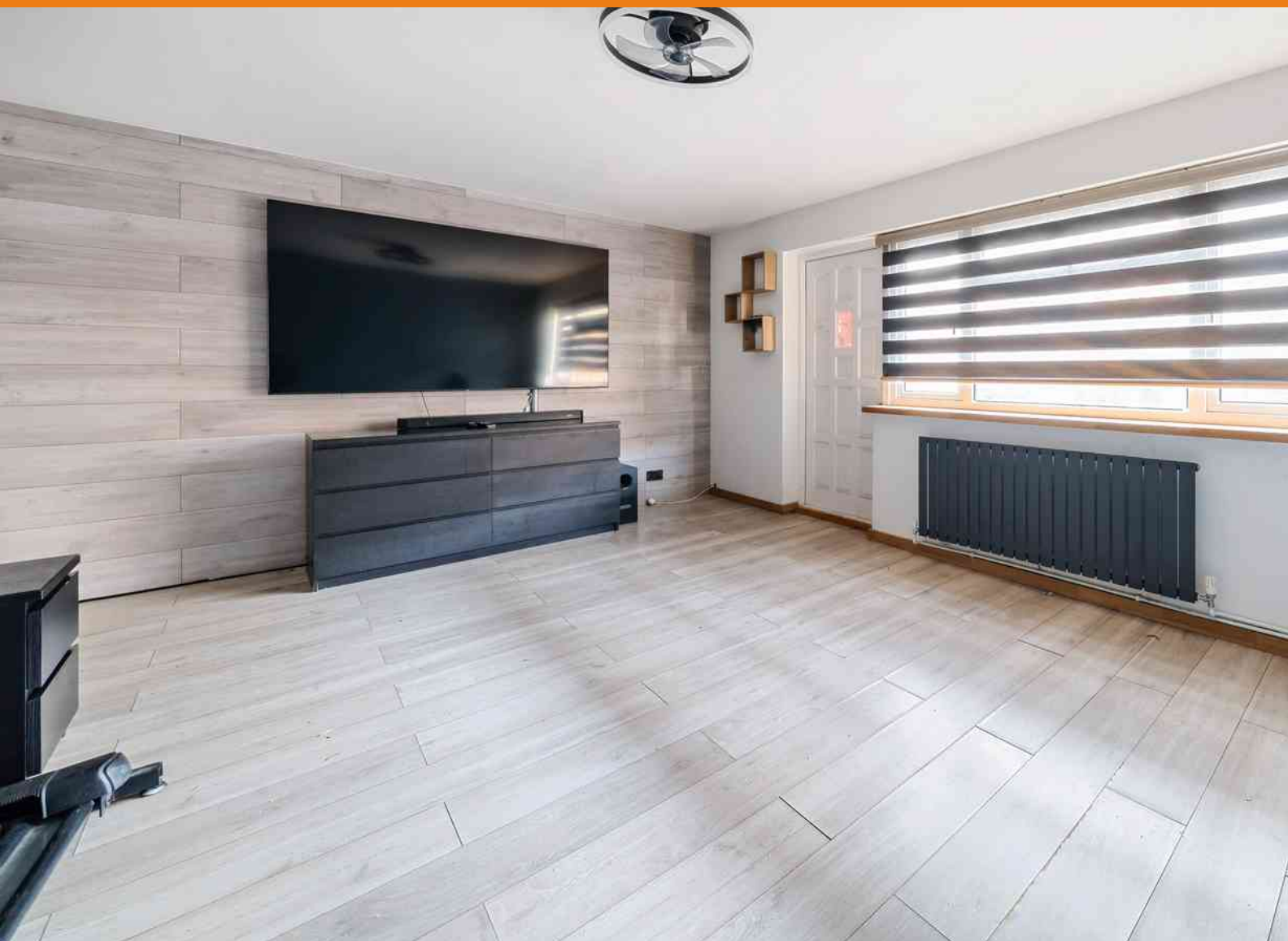


FOR SALE

£475,000

Burham Close, London, SE20

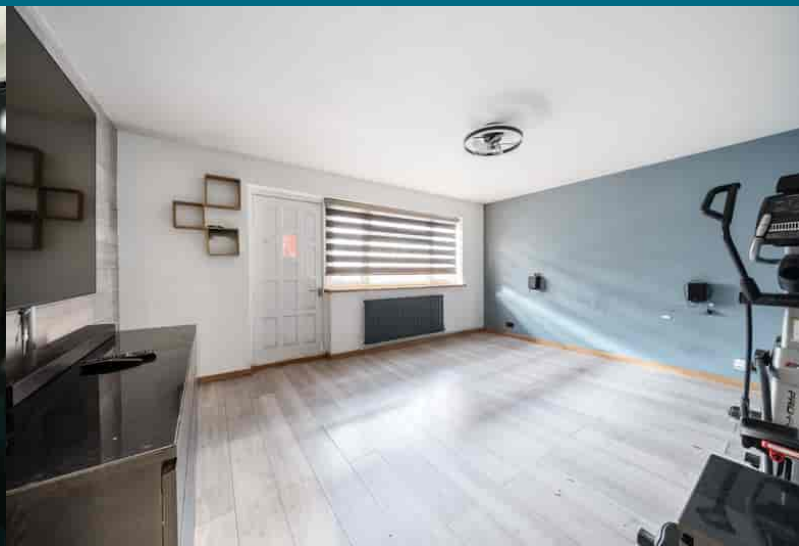


A spacious chain free three bedroom terraced house, offering multiple storage options and situated within easy reach of Penge West, Penge East and Kent House stations and good local amenities.

We are pleased to offer this well presented three bedroom terraced house, offered to the market chain free. The property comprises of a large reception, spacious eat in kitchen/diner, downstairs cloakroom, three good sized bedrooms, modern bathroom and two private gardens.

The property is ideally situated for train stations at Penge East, Penge West and Kent House. There are also an array of local amenities in the area with them only being a short walk away from the property. The popular Crystal Palace park is within easy reach and offers numerous leisure activities. Further transport links from the variety of local stations and main roads make into central London.

- Chain Free
- Terraced House
- Three bedrooms
- Ground floor cloakroom/WC
- Residents parking
- Large reception
- Front & back gardens
- Excellent storage
- Eat in kitchen







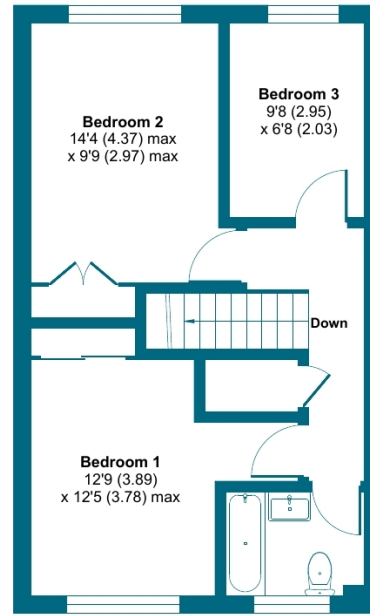
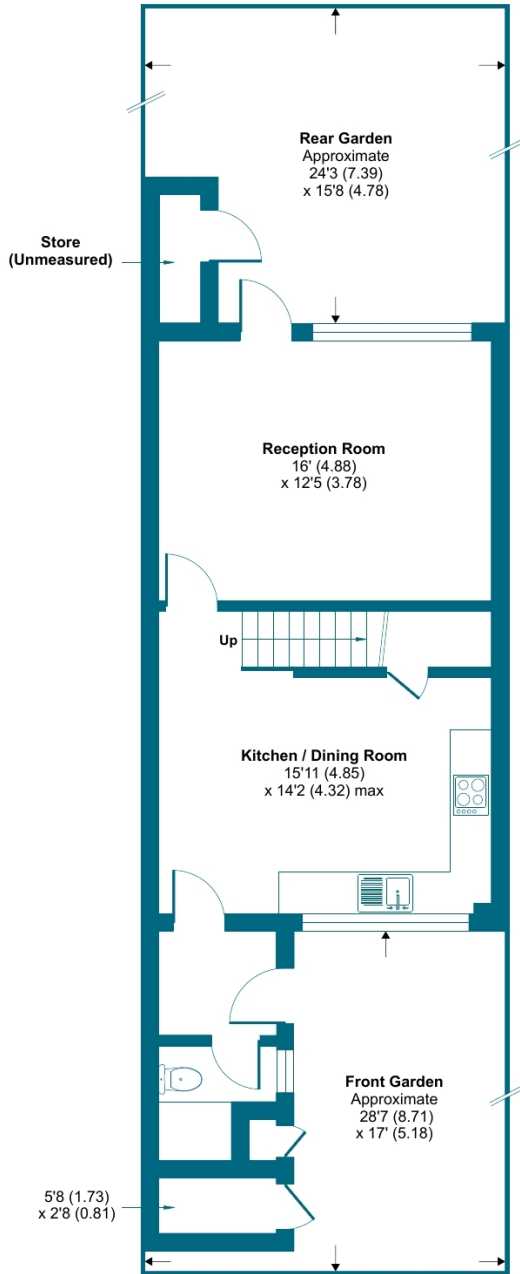
# Burham Close, London, SE20

Approximate Area = 941 sq ft / 87.4 sq m (excludes store)

Outbuilding = 15 sq ft / 1.3 sq m

Total = 956 sq ft / 88.7 sq m

For identification only - Not to scale



Floor plan produced in accordance with RICS Property Measurement Standards incorporating International Property Measurement Standards (IPMS2 Residential). © nchecon 2024. Produced for Grafton Estate Agents. REF: 1079813

