

3 Bedroom(s), Semi-Detached House, Freehold

Masefield Road, Wheatley Hills, Doncaster.



- 3D Virtual Tour Available
- Spacious Lounge
- Modern Family Bathroom
- Driveway and Front Garden
- Local Amenities, Schools and Transport Links

- Three Bedroom Semi Detached Family Home
- Fitted Kitchen Diner
- Rear Enclosed Garden
- Well Presented
- Great Opportunity for First Time Buyers and Investors

£185,000
For Sale

Book your viewing today Tel: 01302 247754

Owner's View

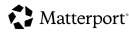
The property is on a quiet street in a sort after location with all amenities within walking distance, local parks, shops, post office, schools, Doctors, hospital, chemist. The city centre is only a 20 minute walk or 5 minute drive with local bus services near by. Our property benefits from a southerly facing rear garden enjoying sun most of the day. With low maintenance gardens front and rear.

Ground Floor

Floor Plan



GROSS INTERNAL AREA
FLOOR: 36.4sqm FLOOR: 27.0 sqm
ENCLOSURE: 63.4 sqm TOTAL: 29.4 sqm
SIZES AND DIMENSIONS ARE APPROXIMATE, ACTUAL MAY VARY.



Kitchen Diner

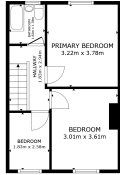


Lounge



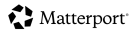
First Floor

Floor Plan



FLOOR 2

GROSS INTERNAL AREA:
FLOOR 2: 16.43m² (176sq ft) 22.0m²
ENCLOSURE: 16.43m² (176sq ft)
TOTAL: 32.86m² (354sq ft)
SIZES AND CONVERSIONS ARE APPROXIMATE, ACTUAL MAY VARY.



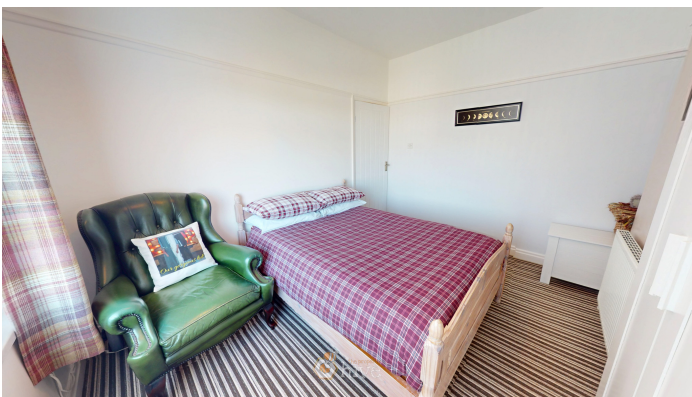
Bedroom



Family Bathroom



Master Bedroom



Externals

Front Aspect



Bedroom



Rear Garden



Property Information

Council Tax Band - B

Utilities - Mains Gas, Mains Electricity, Mains Water

Water Meter - Yes

Tenure - Freehold

Solar Panels - No

Space Heating System - Gas Boiler with radiators

Approximate Heating System Installation Date - 5/18/2017

Water Heating System - Gas boiler (Combi)

Approximate Water Heating Installation Date - 5/18/2017

Boiler Location - Utility room

Approximate Electrical System Installation Date -

Permanent Loft Ladder - No

Loft Insulation - Yes

Loft Boarded out - No

Whilst every effort is made to ensure that the information contained in these particulars is reliable, they do not constitute or form part of an offer or any contract. The Property Hive accept no liability for the accuracy of the contents, and therefore they should be independently verified by prospective buyers or tenants before agreeing an offer. All measurements provided are approximate and should be verified before exchange of contracts. No appliances, fixtures or fittings have been tested and should be checked by the buyer before exchange of contracts to ensure they are in good working order.

All measurements provided are approximate and should be verified before exchange of contracts. No appliances have been tested and should be checked to ensure they are in good working order.



We make it happen.

Tel: 01302 247754 Email: info@thepropertyhive.co.uk Web: www.thepropertyhive.co.uk

Energy Performance Certificate