

FOR SALE

£250,000 Freehold



Sheepcroft Hill, Stevenage, Hertfordshire. SG2 9PR

- CHAIN FREE
- FREEHOLD
- ONE BEDROOM HOUSE
- FRONT AND BACK GARDENS
- ALLOCATED PARKING
- POPLARS LOCATION



PROPERTY DESCRIPTION

This one bedroom cluster house in Poplars, Stevenage is being sold chain free and would be perfect for a first time buyer or investment. The property is tucked away in a quite cul-de-sac and comprises of; entrance hall, living room, kitchen, then on the first floor; bedroom, bathroom and lots of storage along with a loft. Outside benefits from a parking space and a front and rear garden.

Sheepcroft Hill is a quiet cul-de-sac within the Poplars area of Stevenage, being located to good bus and road links, the property is also close to the following amenities:

Sainsbury's supermarket 0.2 Miles

Chip Shop 0.2 Miles

Fairlands 0.8 Miles

Stevenage Town Centre 2 Miles

Stevenage Train Station 2.1 Miles



ROOM DESCRIPTIONS

FRONT GARDEN

ENTRANCE

KITCHEN

2.54m x 1.85m (8' 4" x 6' 1")

LOUNGE

4.22m x 4.36m (13' 10" x 14' 4")

FIRST FLOOR

BEDROOM

3.06m x 3.49m (10' 0" x 11' 5")

BATHROOM

1.69m x 1.94m (5' 7" x 6' 4")

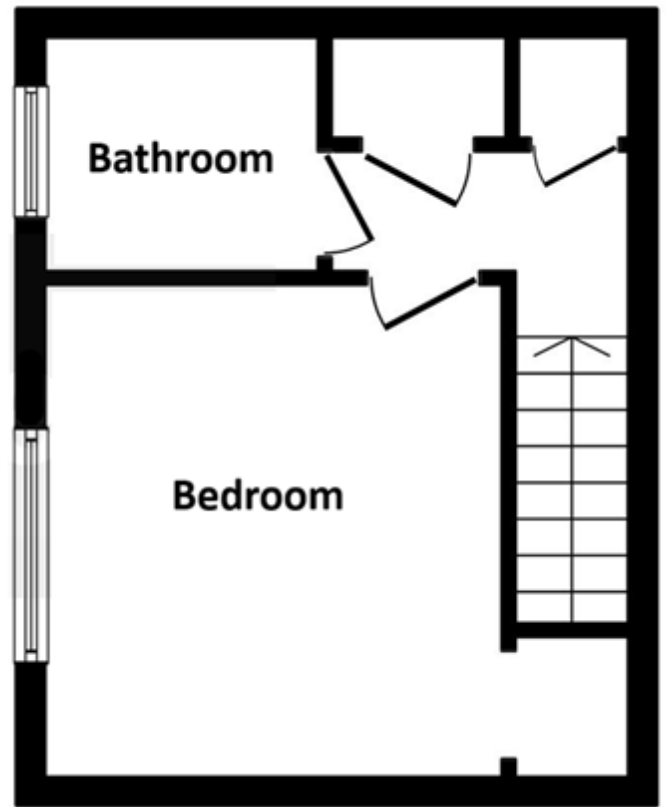
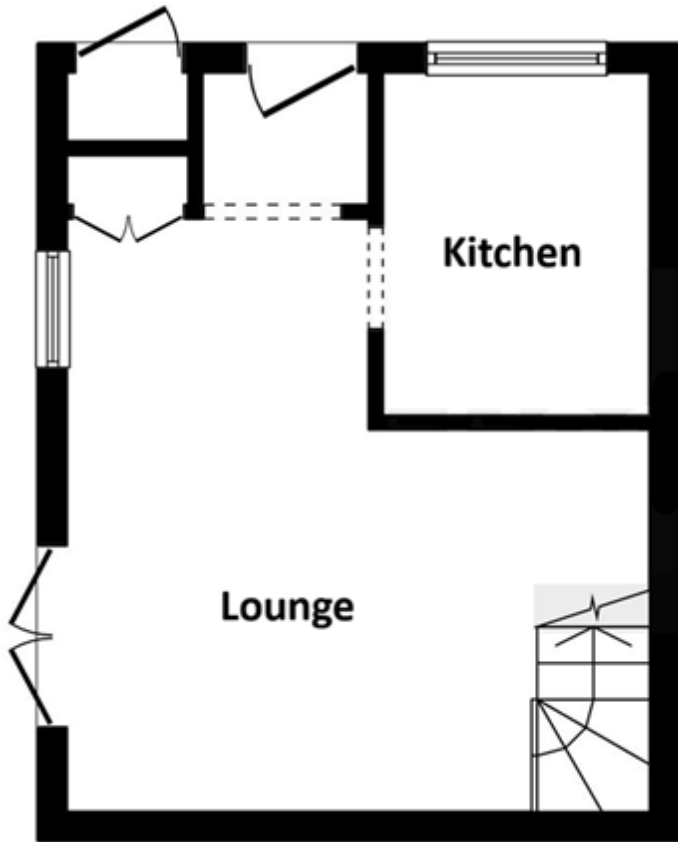
ALLOCATED PARKING

REAR GARDEN



FLOORPLAN

KALM
- ESTATE AGENTS -



Stevenage
29, Shephall Green, Stevenage, SG2 9XS
01438 572020
linzi.davis@kalmestateagents.co.uk