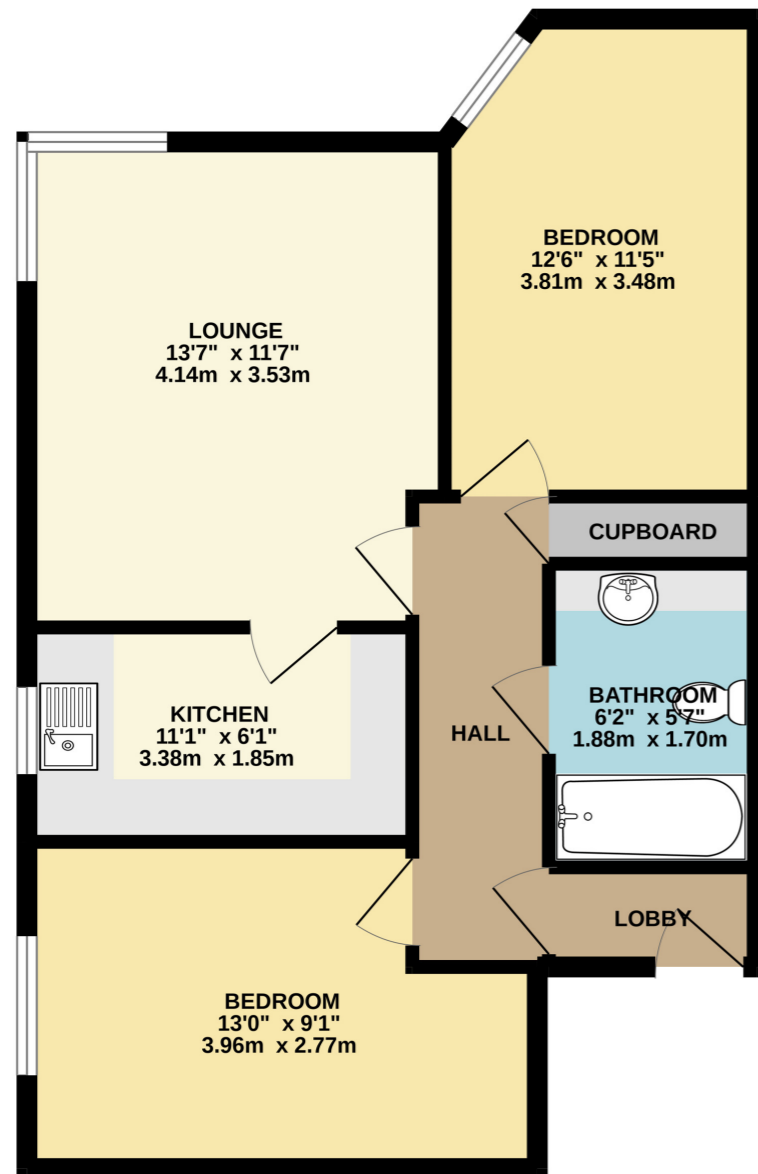


GROUND FLOOR
592 sq.ft. (55.0 sq.m.) approx.



TOTAL FLOOR AREA : 592 sq.ft. (55.0 sq.m.) approx.
Whilst every attempt has been made to ensure the accuracy of the floorplan contained here, measurements of doors, windows, rooms and any other items are approximate and no responsibility is taken for any error, omission or mis-statement. This plan is for illustrative purposes only and should be used as such by any prospective purchaser. The services, systems and appliances shown have not been tested and no guarantee as to their operability or efficiency can be given.
Made with Metropix ©2022



Oxford Road, Reading, Berkshire.

£210,000 Leasehold

Offered to the market with no onward chain complications is this two double bedroom second floor apartment. The property is situated in a fantastic area, being within walking distance to bus routes, Tilehurst and Reading West train stations, as well as being on the doorstep of various local shops and amenities. The property comprises of an open plan lounge diner, kitchen, and a refitted bathroom. Other features include double glazed windows, communal gardens, and an allocated parking space.

- Two Double Bedrooms
- Lounge Diner
- Refitted Bathroom
- Allocated Parking Space
- Communal Gardens
- Close to Public Transport
- Close to Reading Town Centre
- No Onward Chain



Property Description

Second Floor

Hallway

Entrance to all rooms, laminate wood flooring, storage heater, built in storage cupboard.

Lounge Diner

13' 7" x 11' 7" (4.14m x 3.53m) Rear aspect double glazed window, laminate wood flooring, storage heater, television point.

Kitchen

11' 1" x 6' 1" (3.38m x 1.85m) Vinyl flooring, rear aspect double glazed window, range of base and eye level units, electric hob, single oven, extractor fan, space for white goods, single sink with drainer.

Bedroom One

12' 6" x 11' 5" (3.81m x 3.48m) Side aspect double glazed window, television point, storage heater.

Bedroom Two

13' 0" x 9' 1" (3.96m x 2.77m) Rear aspect double glazed window, storage heater.

Bathroom

6' 2" x 5' 7" (1.88m x 1.70m) Vinyl flooring, panel enclosed bath with shower, low level wc, wash basin, extractor fan, heater.

Outside

Parking

One allocated parking space.

Communal Gardens

Council Tax Band