

4 St Marys Road, Fillongley, Coventry, Warwickshire. CV7 8EY

£290,000 Freehold

FOR SALE



bayzos.

Bayzos Estate Agents
Fillongley, CV7 8DX

0330 124 6533
info@bayzos.co.uk

PROPERTY SUMMARY

No Chain | Approx Total Floor Area 87 Sq. M. | EPC Rating D Potential B | Sought After Location of Fillongley | Solar Panels | Field Views To The Front | Generous Rear Garden | Double Glazing & Central Heating | Attention Families & First Time Buyers | Countryside Living

FEATURES

- No Chain
- Approx Total Floor Area 87 Sq. M.
- EPC Rating D Potential B
- Sought After Location of Fillongley
- Solar Panels
- Field Views To The Front
- Generous Rear Garden
- Double Glazing & Central Heating
- Attention Families & First Time Buyers
- Countryside Living



PROPERTY DESCRIPTION

Property Location

Fillongley is a pleasant village in the north of Warwickshire. It is situated 6 miles east of Bedworth, 7 miles south-west of Nuneaton and of equal distance northwest of Coventry. With ease of access to the NEC, Birmingham Airport, and railway stations with access to London within an hour. It affords ease of commuting onto motorways for the M6, M42 and M69. There is a well-regarded Primary school, garage and local public house within the village and a range of social community groups.

ROOM DESCRIPTIONS

Key Facts for Buyers

See the brochure for a Guide to This Property & the Local Area

Room Measurements

Room dimensions and total floor areas are included within our floor plan

Additional Information*

Selling Position: No Chain

Age of the Property: 1940's

Last Sold: 2020

Council Tax Band: C

Local Authority: Warwickshire

Electrical Performance Certificate Rating: D

Approx. Total Floor Area: 87 m²

Parking: Generous on street parking

Heating System: Gas

Boiler Age: TBC

Boiler Last serviced: TBC

Boiler Location: TBC

Fuse Box Location: TBC

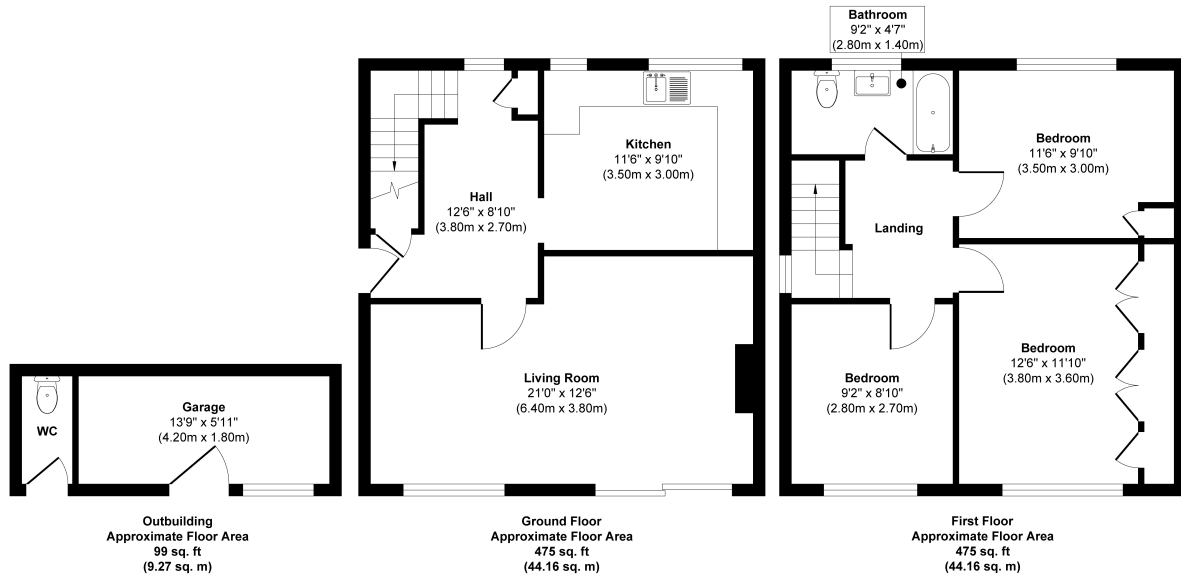
Type of Windows: Double glazing

Loft: TBC

*Please verify these details through the conveyancing process



FLOORPLAN & EPC



Approx. Gross Internal Floor Area 1049 sq. ft / 97.59 sq. m (Including Outbuilding)

Illustration for identification purposes only, measurements are approximate, not to scale.
Produced by Elements Property

