



474 Julian Court, Glenrothes, Fife, KY7 6SR

Bright & Well Presented, Three Bedroom, Mid-Terrace with Garden & Driveway

Up to date price and viewing info at [mov8realestate.com/property](https://www.mov8realestate.com/property)

espc rightmove  Zoopla
find your happy

Property Description

Bright and well-presented, three-bedroom, mid-terrace house, with a garden and driveway. Located in a quiet cul-de-sac in an established residential area of Glenrothes, Fife.

Comprises an entrance hallway, living room, kitchen/dining room, upper hall, three flexible bedrooms, a bathroom and a ground-floor WC.

With a well-proportioned floor plan, highlights include a fitted kitchen and modern bathroom suites, gas central heating and double glazing. In addition, there is good integrated storage provision, contemporary flooring, and an enclosed low-maintenance rear garden with a storage shed.

Furthermore, there is a private driveway to the front, whilst the cul-de-sac also includes a central green incorporating additional unrestricted residential parking.

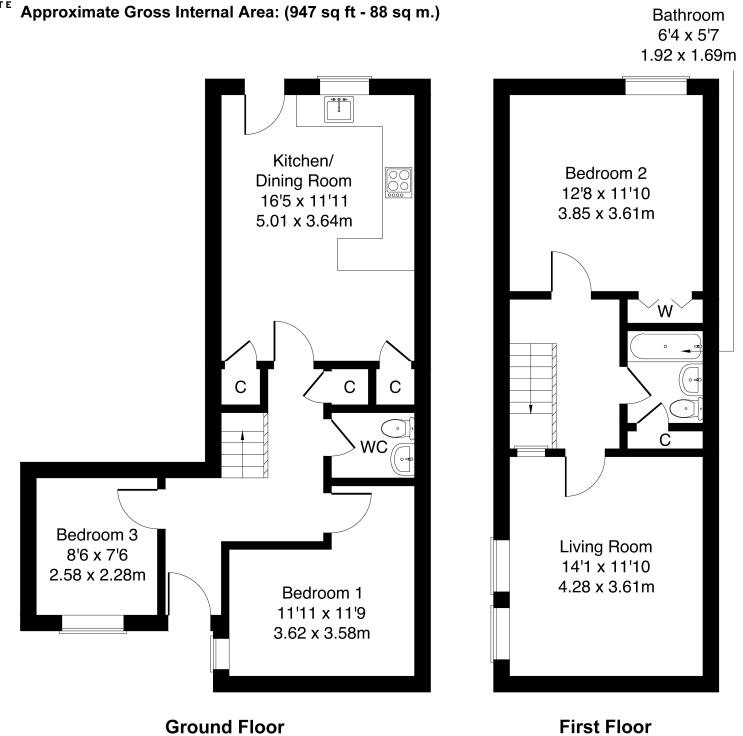
A welcoming entrance affords access throughout the ground floor, including a storage cupboard and a convenient WC, as well as the stairs leading to the upper hall. The tastefully finished living room is set on the upper floor, featuring two windows with a southerly-facing aspect allowing plentiful natural light and wood effect flooring. Whilst the kitchen is set on the ground floor, with rear garden access and ample space for a dining area. Fitted wall and base units include stone effect worktops, a sink with drainer and a tiled surround; with appliances including an integrated oven and electric hob, and a freestanding washing machine and dishwasher.

Bedrooms one and three are set to the front, on the ground floor, with light decor and carpeted flooring; whilst bedroom two is set to the rear, on the upper floor, similarly well-finished, and featuring open built-in wardrobe space. Completing the accommodation, the bathroom is set internally off the upper hall, fitted with a modern three-piece suite including a shower over the bath, wall panelling, spotlights and a built-in storage cupboard.

mov⁸ REAL ESTATE
Estate Agents and Solicitors

474 Julian Court, Glenrothes, KY7 6SR

Approximate Gross Internal Area: (947 sq ft - 88 sq m.)



Legal Disclaimer : Floor-plan and measurements are for illustrative guidance only, and not intended to form part of any contract.

Area Description

Glenrothes is Fife's third largest town, with a mixture of residential properties throughout. Retail opportunities include the Kingdom Shopping Centre, with a broad range of high-street names, with supermarkets including an ASDA, ALDI, Lidl and Marks & Spencer. The Michael Woods Centre provides extensive modern sports and leisure facilities, whilst Glenrothes boasts its very own

18-hole golf course, cinema and theatre in the Rothes Halls. Both primary and secondary schooling are well provided for, with further education available at The Adam Smith College at the Stenton campus of Fife College. For the commuter, the A92 allows rapid access to Edinburgh and the central belt and there are railway stations at both Thornton and Markinch.





Our Services

- Free pre-sale property valuations
- Great value fixed estate agency fees
- Extensive buyer matching database
- Purchase and sale conveyancing

Contact Us

0345 646 0208

sales@mov8realestate.com

www.mov8.com

Head Office

6 Redheughs Rigg, Edinburgh, EH12 9DQ

Glasgow Office

77 Renfrew Street, Glasgow, G2 3BZ



Estate Agents and Solicitors

