

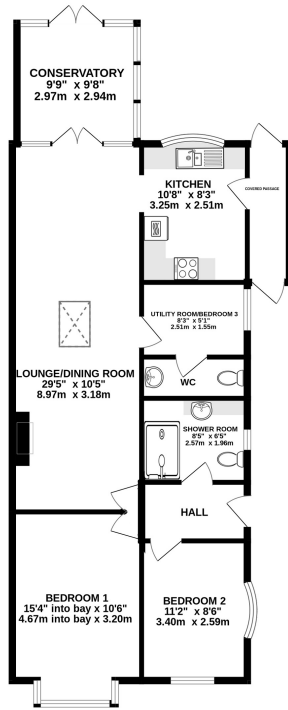
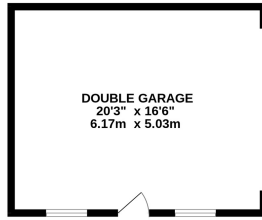
Squires Bridge Road, Shepperton, TW17 0JX

£565,000



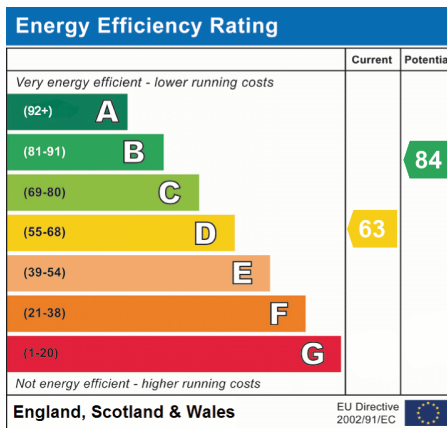
- Immaculately Presented 2/3 Bedroom Bungalow
- Third Bedroom/Utility Room
- Refurbished Bathroom and Separate WC
- Low Maintenance Garden
- Two Double Bedrooms
- Modern Kitchen
- Large Detached Garage and Off Street Parking
- Freehold, Council Tax Band E £2816

GROUND FLOOR
1280 sq.ft. (118.9 sq.m.) approx.



TOTAL FLOOR AREA : 1280 sq.ft. (118.9 sq.m.) approx.

Whilst every attempt has been made to ensure the accuracy of the floorplan contained here, measurements of doors, windows, rooms and any other items are approximate and no responsibility is taken for any error, omission or mis-statement. This plan is for illustrative purposes only and should be used as such by any prospective purchaser. The services, systems and appliances shown have not been tested and no guarantee as to their operability or efficiency can be given.
Made with Metropix ©2024.



We have not tested the services or domestic appliances so we cannot verify that they are in working order. The buyer is advised to obtain verification from their solicitor or surveyor. These particulars form no part of any offer or contract and their accuracy cannot be guaranteed.