



3 Jasmine Way, Bexhill-on-Sea, East Sussex,
TN39 3GJ

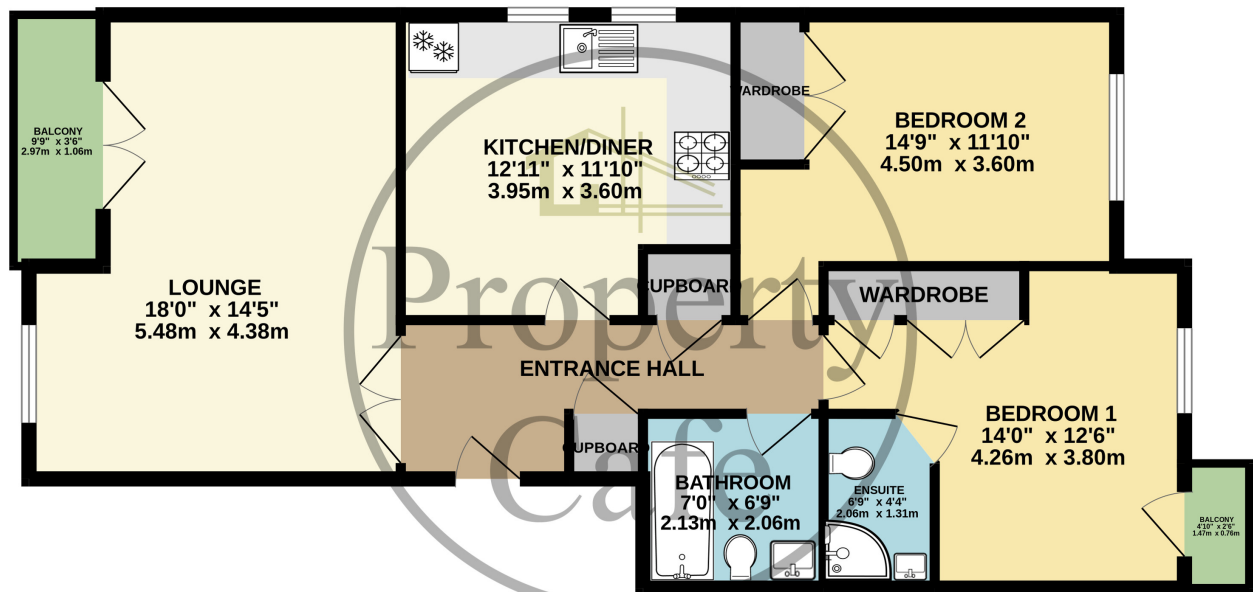
£338,000



- Exclusive Gated Development
- Two Balconies & Communal Gardens
- Modern Fitted Kitchen With Integrated Appliances
- Master Bedroom & En-suite Shower Room
- Modern Fitted Family Bathroom
- Allocated Off-Road Parking Space
- Immaculate Condition Throughout
- Ample Storage Throughout
- Double Glazed & Gas Central Heated
- Viewing Highly Recommended



1ST FLOOR APARTMENT
839 sq.ft. (77.9 sq.m.) approx.



TOTAL FLOOR AREA : 839 sq.ft. (77.9 sq.m.) approx.

Whilst every attempt has been made to ensure the accuracy of the floorplan contained here, measurements of doors, windows, rooms and any other items are approximate and no responsibility is taken for any error, omission or mis-statement. This plan is for illustrative purposes only and should be used as such by any prospective purchaser. The services, systems and appliances shown have not been tested and no guarantee as to their operability or efficiency can be given.

Made with Metropix ©2024