



8 Shepherds Place, Shefford, Bedfordshire, SG17 5BF

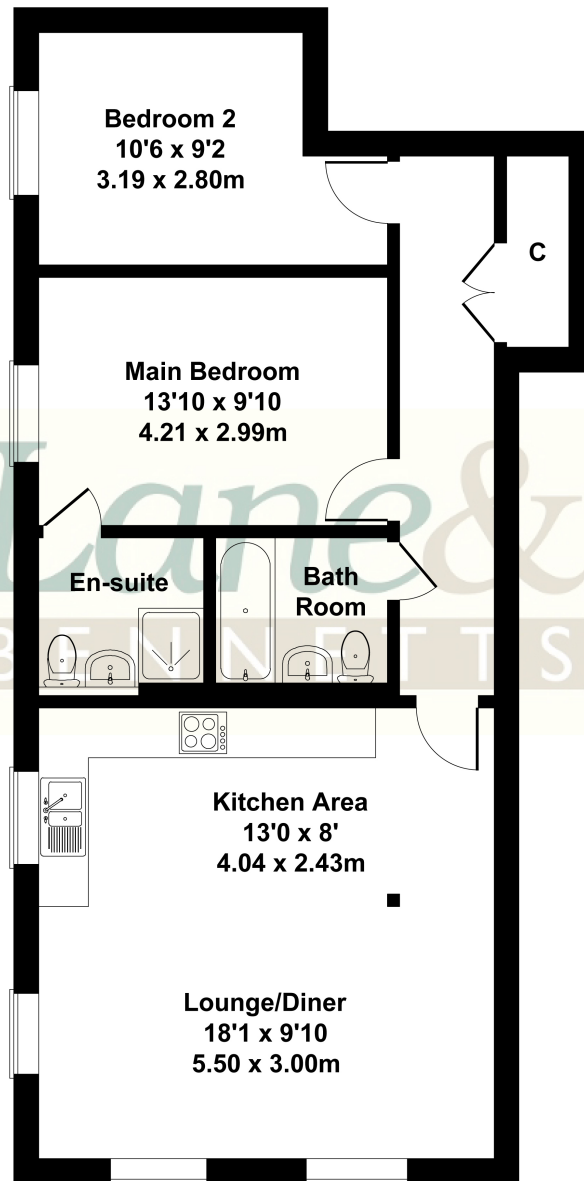
£260,000

STUNNING 2 bedroom apartment in SHOWROOM CONDITION and superbly located in the centre of Shefford with all shops and amenities right on your doorstep. Boasting over 786 sqft with beautiful open plan living with dual aspect windows plus a high end kitchen with a range of AEG built in appliances, two double bedrooms plus an en-suite and guest bathroom. This secure first floor property has entryphone security and also benefits from allocated parking plus further visitor spaces. Easy access to Arlesey railway station and the A1 motorway A QUALITY HOME - VIEWING A MUST



8 Shepherds Place Shefford

Approximate Gross Internal Area
786 sq ft - 73 sq m



Not to Scale. Produced by The Plan Portal 2025
For Illustrative Purposes Only.

- PRIME LOCATION - HIGH STREET + AMENITIES RIGHT ON YOUR DOORSTEP
- BEAUTIFUL OPEN PLAN LIVING WITH DUAL ASPECT WINDOWS
- QUALITY FITTED KITCHEN
- AEG FULLY INTEGRATED KITCHEN APPLIANCES + INDUCTION HOB
- STUNNING 2 BEDROOM APARTMENT IN SHOW HOME CONDITION
- TWO DOUBLE BEDROOMS
- EN-SUITE + GUEST BATHROOM
- ALLOCATED PARKING + VISITOR SPACES
- GAS CENTRAL HEATING + NEST CONTROLLED
- SECURE TOP OF THE RANGE APARTMENT - DONT MISS OUT CALL FOR A VIEWING

