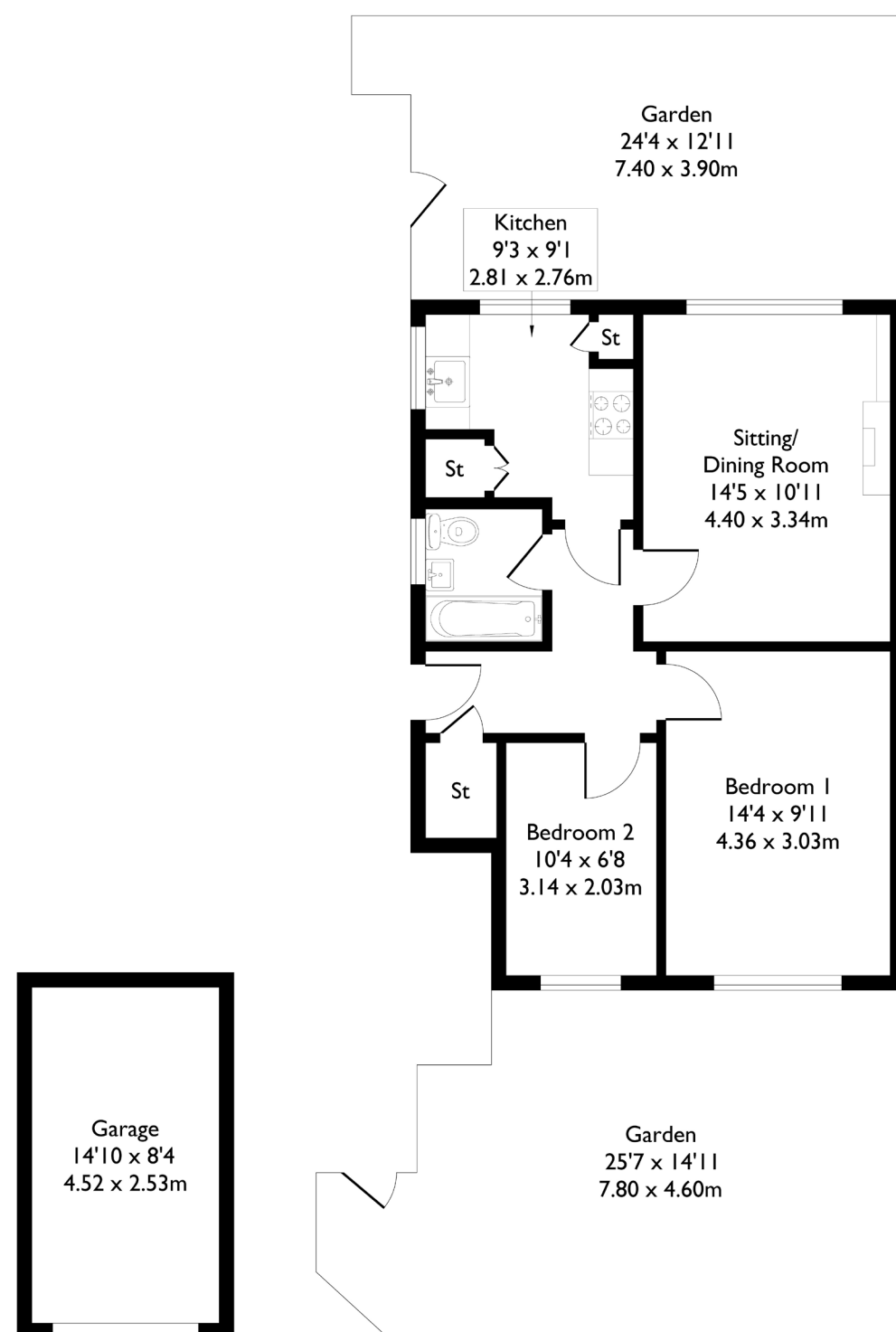


Carlyle Road, London, W5

Approximate Floor Area = 65.2 sq m / 702 sq ft



2 BEDROOM FLAT

Carlyle Road, W5 £475,000

Welcome to this well-presented two-bedroom, one-bathroom ground-floor flat located in the heart of Ealing.

The property offers a separate kitchen and living area, a private garden, and the added benefit of a garage.

FEATURES

- Two Bedrooms
- One Bathroom
- Separate Plan Kitchen/Living
- Private Garden & Garage
- Northfields Station/Brentford Station
- Ealing Fields High School
- EPC Rating D



2 BEDROOM FLAT

Carlyle Road, W5

The flat is in excellent condition and ready for immediate occupation. Ideally positioned, it is 15 mins to Northfields Station and moments from the Great West Road, providing direct access into Central London by car.

The property also falls within the catchment area for Ealing Fields High School, making it an excellent choice for families and professionals alike. EPC Rating D.

