



£675,000 Freehold



38 Hythe Avenue, Bexleyheath, Kent DA7  
5NU





## PROPERTY DESCRIPTION

RE/MAX SELECT are delighted to offer for sale this extended J-type 1930s Feakes&Richards semi-detached house, close to schools, amenities, and transport links including Bexleyheath station. This property comprises 4 bedrooms, through-lounge, family/dining room, fitted kitchen, study room, upstairs family bathroom, and ground floor wet-room.

Further benefits include double glazing, gas central heating, detached garage, and 65ft (approx) garden.

Total Internal Area approx: 1,864.95 sq ft (173.26 sq m).





## ROOM DESCRIPTIONS

### Ground Floor

#### Hallway

Wood-effect flooring, understairs cupboards; carpeted stairs leading to first floor.

#### Through Lounge

Wood-effect flooring, radiators, feature fireplace, double glazed windows.

#### Dining / Family Room

Carpeted, radiator, double glazed windows.

#### Kitchen

Vinyl flooring; range of wood wall and base units with cream marble-effect worktops; sink and drainer with mixer tap; integrated extractor hood, integrated fridge/freezer; space and connections for free-standing cooker; space and connections for washing machine; double glazed windows; door leading to rear garden.



#### Study Room

Wood-effect flooring, double glazed windows; door leading to wet room; door leading to rear garden.

#### Wet Room

Tiled walls, electric shower; vanity unit with wash-hand basin and mixer tap; w/c.

### First Floor

#### Landing

Carpeted; access to loft.

#### Master Bedroom

Carpeted, radiator, double glazed windows,

#### En-Suite Shower Room

Carpeted, radiator, shower enclosure; vanity unit with wash-hand basin; double glazed windows.

#### Bedroom

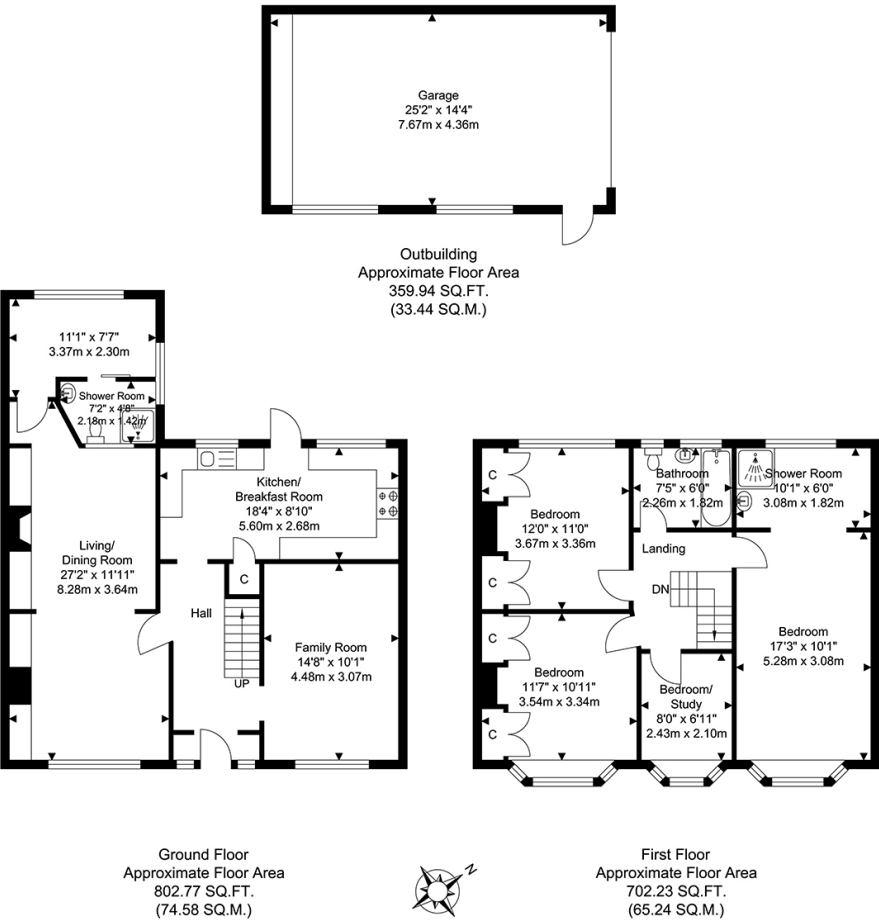
Carpeted, built-in wardrobes, radiator, double glazed windows.

#### Bedroom

Carpeted, built-in wardrobes, radiator, double glazed windows.



FLOORPLAN



TOTAL APPROX FLOOR AREA 1864.95 SQ. FT / 173.26 SQ. M  
For Identification Purposes Only.

