



FOR SALE

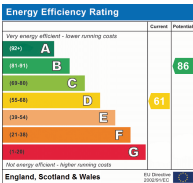
Shaldon Road, Edgware, Middlesex HA8 6AL

*** SCOPE SCOPE SCOPE ***

A spacious 5-bedroom end-of-terrace property conveniently located close to Queensbury Underground Station (Jubilee), Canons High, and Krishna Avanti schools. This home has a double-storey side extension and comprises of a through lounge, kitchen, utility area, downstairs shower room, family bathroom, carport, rear garden and ample parking. With further room for expansion (STPP), we are looking for a purchaser with a little vision, who will be thoroughly rewarded with a beautiful home at the end. Currently being sold on a chain-free basis.

Call the Vendor's Sole Agent, Mischa & Co to book your tour today!!

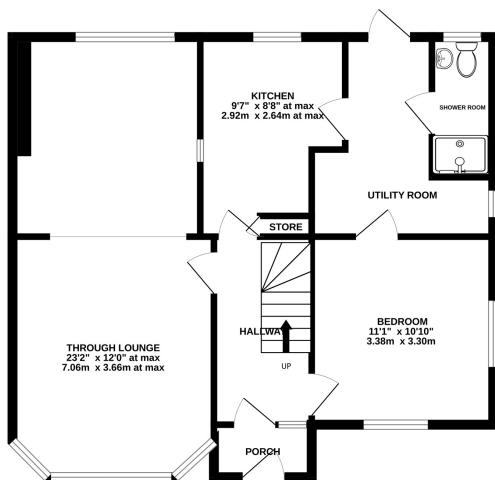
Council Tax Band D (Harrow) & EPC D (61).



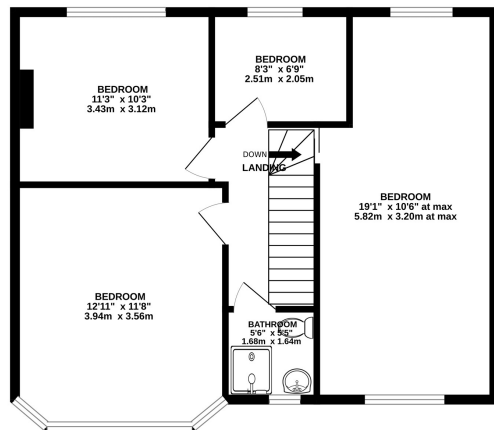
O.I.E.O £699,950 Freehold

Floorplan

GROUND FLOOR
578 sq.ft. (53.7 sq.m.) approx.



1ST FLOOR
560 sq.ft. (52.0 sq.m.) approx.



TOTAL FLOOR AREA: 1138 sq.ft. (105.7 sq.m.) approx.

Whilst every attempt has been made to ensure the accuracy of the floorplan contained here, measurements of doors, windows, rooms and any other items are approximate and no responsibility is taken for any error, omission or mis-statement. This plan is for illustrative purposes only and should be used as such by any prospective purchaser. The services, systems and appliances shown have not been tested and no guarantee as to their operability or efficiency can be given.

Made with Metropix ©2024



NB: Please note that all fittings, kitchen appliances and heating systems have not been tested by Mishca & Co Sales & Lettings. Whilst we endeavour to make our sales details accurate and reliable. Room sizes should not be relied upon for carpets and furnishings. If there is any point, which is of particular important to you, please contact our office and we will be pleased to verify any information for you. Do so particularly if contemplating travelling some distance to view this property.