

Pier House Flat 8, 1 Marine Crescent

Folkestone
CT20 1PS

£1,300

pcm

TO LET WITH BURNAP AND ABEL... An immaculate two bedroom apartment with direct sea views. Decorated and finished to a stylish standard, this flat truly is a great place to call home.

Located on the first floor, the property benefits from breath-taking views across the English Channel.

The property comprises two double bedrooms, a lounge/dining room, separate kitchen and bathroom.

The lounge/diner boasts original features including fireplace feature, picture rail and coving. Carpeted flooring and neutral décor. Direct sea views and a balcony to the front. This leads onto the kitchen through double doors with a tasteful fitted kitchen, marble effect tiled floor and splashback. Integrated oven and hob with extractor fan. Freestanding fridge/freezer, washing machine and dishwasher are also installed. Again with those sea views from the kitchen too



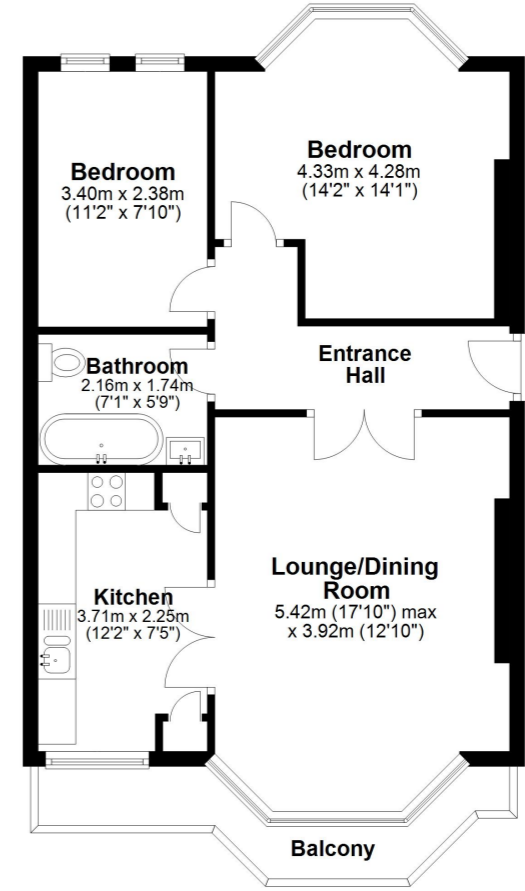
refurbished with Victorian style WC and hand basin and rolltop bath with handheld shower. Black marble effect tiles on the wall and floor.

No pets, no smoking, working tenants.

Available end of September.

Contact Burnap and Abel to organise a viewing on 01303 258590.

First Floor
Approx. 58.1 sq. metres (625.9 sq. feet)



Whilst every attempt has been made to ensure the accuracy of the floor plan contained here, measurements of doors, windows, rooms and any other items are approximate and no responsibility is taken for any error, omission or mis-statement. This plan is for illustrative purposes only and should be used as such by any prospective purchaser.
Plan produced using PlanUp.

