



12 Quinton Place, Codford, Warminster
Wiltshire, BA12 0JU

Guide Price - £750,000

COOPER
AND
TANNER



12 Quinton Place, Codford, Warminster, Wiltshire, BA12 0JU

 5  2  3 EPC D

Guide Price - £750,000 Freehold

Description – (Approx 1826 sq ft)

We are delighted to offer this substantial family residence that is situated in the popular and desirable Quinton Place development in the village of Codford.

This stunning and pleasingly presented five-bedroom village home offers generous accommodation that is arranged over three floors. The home has an elegant Georgian-style with period features and good proportions. The property is situated at the entrance of this exclusive development of contrasting period designed properties.

On the ground floor a generous entrance hall has a staircase to the upper level, and doors giving access to the kitchen / breakfast room having fitted wall, base units and some integrated appliances, a door leads to the utility room with access to outside. The dining room has feature glazed doors to the rear garden, a further glazed double door opens into the formal

and elegant dual aspect living room with feature composite stone fire surround.

On the first floor there are two double bedrooms both with ensuite bathrooms, a single bedroom and family bathroom. On the second floor there are two further bedrooms incorporating attractive lead cheeked dormer windows.

Outside

The property is south facing and situated at the entrance of the development and complemented with far reaching views to the East. A block paved path gives access to the front door with level lawned area to the side. A gate gives access to the pleasing part walled garden that is laid to lawn and incorporates a paved patio area. A block paved drive provides private off street parking and leads to the tandem garage

A generous cladded tandem garage with a side door to the garden,









Location

The Wylde Valley village of Codford is extremely well provided and local amenities include Post Office, Manor Farm Vets and village supermarket, garage, village school, doctors surgery, social club and The Woolstore Theatre.

Warminster offers a wide range of shopping and leisure facilities to include library, sports centre, swimming pool, schools, churches, doctors' and dentists' surgeries, hospital and post office. Warminster also benefits from a main line railway station to London Waterloo whilst the nearby A303 provides excellent road links to London to the east and Exeter to the west.

The A361 connects to Swindon to the north-east and Barnstaple to the south-west, while the north south A350 primary

route to Poole runs close to the town. Local attractions include Longleat House and Safari Park, Shearwater Lake, Stourhead and Salisbury Plain.

Warminster train station has connections to Bath/ Bristol / Bradford on Avon / Salisbury / Westbury / Paddington /Reading. Junction 18 / M4 is 18 miles (29km) away.



Local Information

Local Council: Wiltshire Council

Council Tax Band: G

Heating: Gas central heating

Services: Private drainage/ Mains Electricity and Water

Tenure: Freehold



Motorway Links

- A303/M3/A361/A350
- M4



Train Links

- Westbury
- Warminster



Nearest Schools

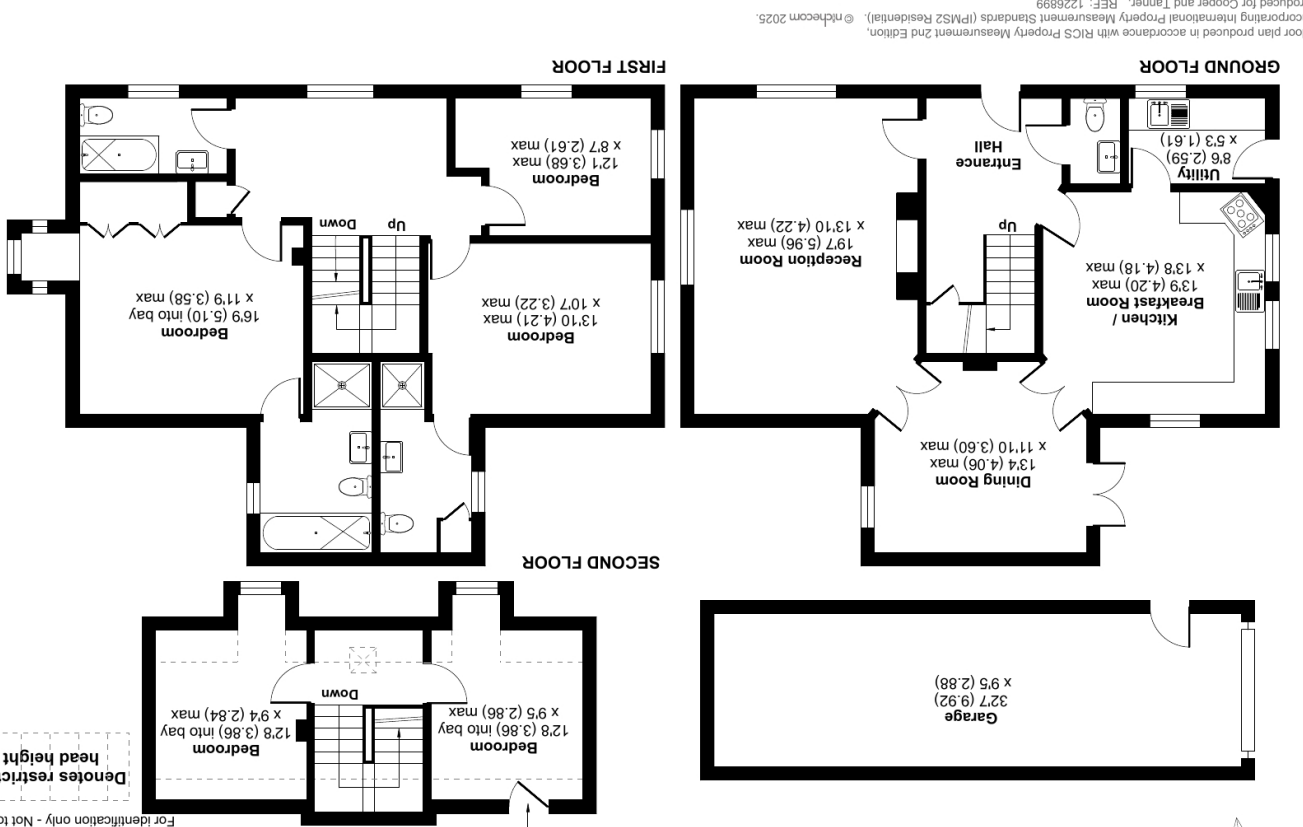
- Trowbridge/Frome
- Warminster/Westbury/BOA

Quinton Place, Warmminster, BA12

Approximate Area = 1826 sq ft / 169.6 sq m
 Limited Use Area(s) = 80 sq ft / 7.4 sq m
 Garage = 308 sq ft / 28.6 sq m
 Total = 2214 sq ft / 205.6 sq m

For identification only - Not to scale

Denotes restricted head height



Floor plan produced in accordance with RICS Property Measurement 2nd Edition. © nchecom 2025. Incorporating International Property Measurement Standards (IPMS2 Residential). REF: 1226899 Produced for Cooper and Tanner.

WARMINSTER OFFICE
 telephone 01985 215579
 48/50 Market Place, Warmminster BA12 9AN
warmminster@coopertanner.co.uk

Important Notice: These particulars are set out as a general outline only for the guidance of intended purchasers and do not constitute, nor constitute part of, an offer or contract. All descriptions, dimensions, reference to condition and necessary permissions for use and occupation, warranties and other details are given without responsibility and any intending purchasers should not rely on them as statements or representations of fact but must satisfy themselves by inspection or otherwise as to the correctness of each of them.



COOPER AND TANNER